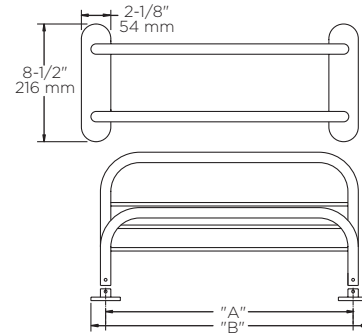
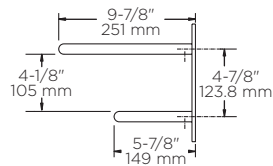


TECHNICAL DATA

Towel Shelves

TOWEL SHELF WITH 1 BAR 43018 & 43024 SERIES



MATERIALS:

Wall Flange - 17 Gauge Stamped Stainless Steel
Shelf & Towel Bar Tubing - .035 (20 Gauge) 3/4" O.D. Stainless Steel Tubing
Crossbars - .025 (23 Gauge) 3/8" O.D. Stainless Steel Tubing
Wall Plate - Steel x 13 Gauge, Nickel Plated

INSTALLATION:

Mount wall flanges (set screw holes facing down) through holes in projecting fittings with 4 - #10 x 1-1/2" oval head nickel plated steel screws provided or 4 - 3/16 x 3" zinc plated steel toggle bolts provided. Wall flange screw holes are vertically 4-7/8" center to center and horizontally 18" or 24" center to center. Mount top shelf first and then bottom bar with 4 - 1/4-20 x 5/8" slotted nickel plated steel set screws.

LENGTH	18" (457 mm)	24" (610 mm)
DIM "A"	18" (457 mm)	24" (610 mm)
DIM "B"	20-1/8" (511 mm)	26-1/8" (664 mm)

OPTIONAL FASTENER INFORMATION:

Wood blocking is preferable behind all wall surfaces. If wood blocking is not available, the following fasteners are suggested: Tile/Masonry - Plastic or Lead Anchors, Plaster/Drywall - Toggle Bolts.

SPECIFICATION:

Surface mounted towel shelf with 1 bar shall be model _____
(fill in model number) by Liberty Hardware Manufacturing Corporation.



see what Delta can do™