

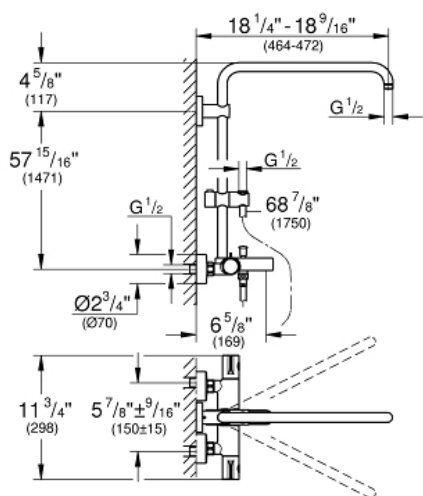
EUPHORIA SYSTEM

Shower System with Bath Thermostat for Wall Mount

MODEL # 26490000

GROHE CANADA, INC. | 5900 Avebury Road, Mississauga, Ontario, Canada L5R 3M3
Phone: 905-271-2929 | Fax: 905-271-9494 | info@grohe.ca

Pure Freude
an Wasser



ADA

Product Description:

EUPHORIA SYSTEM

Shower System with Bath Thermostat for Wall Mount

Standard Specification:

- 17 3/4" (450mm) horizontal swivel shower arm
- Exposed thermostat with Aquadimmer that diverts between hand shower and showerhead
- Tub Spout
- Showerhead and hand shower (not included)
- Bar with adjustable height hand shower holder
- Rotaflex metal shower hose 69" (1750mm)
- **GROHE TurboStat** Compact cartridge with wax thermoelement
- **GROHE StarLight** chrome finish
- Exposed thermostatic temperature control with SafeStop at 100°F/38°C
- GROHE SafeStop Plus optional temperature limiter at 110°F (43°C) included
- Inner WaterGuide for a longer life
- Twistfree to prevent hose from twisting
- Min. recommended pressure: 15 psi (1.0 bar)
- Includes adaptors for easy installation (depth adjustable)
- Tub Spout Flow Rate: 5.3 gpm (20 L/min) at 45 PSI
- ADA Compliant handles
- Protected against backflow

Applicable Codes & Standards:

- ASME A112.18.1/CSA B125.1
- US Federal and State material regulations
- ICC/ANSI A117.1

Color:

- 26490000 StarLight Chrome