

# GR-Series

## Guide Rail System

# Liberty Pumps®

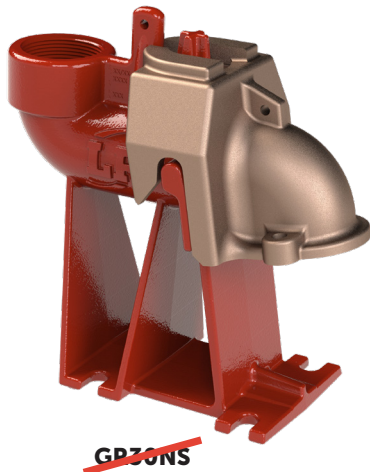
A Family and Employee Owned Company

### Features

- 2" or 3" Discharge FNPT
- Heavy cast iron construction
- Rugged one rail design with auto-guide feature
- 1-1/4" Guide pipe FNPT (guide rail pipe not included)
- Heavy-duty nitrile sealing grommet
- Upper cast iron rail support bracket provided
- Powder coated for corrosion resistance

### Models Available For

FL, LE, LEH, PRG, and X-Series Pumps



"NS" non-sparking models feature a bronze claw for installation in hazardous locations and fitment with X-Series pumps.

innovate. evolve.

# GR-Series

## Specifications

**Material:** Class 25 Gray Cast Iron (Bronze claw on "NS" models)

**Weight:** GR22 – 38 lbs GR30 – 46 lbs

**Seal:** Heavy-Duty Nitrile

**Rail Size:** 1-1/4" (Not Included)

**Discharge:** GR22 - 2" Female NPT, GR30 - 3" Female NPT

**Maximum Pump Weight:** 350 lbs

**Upper Rail Support:** Class 25 Gray Cast Iron

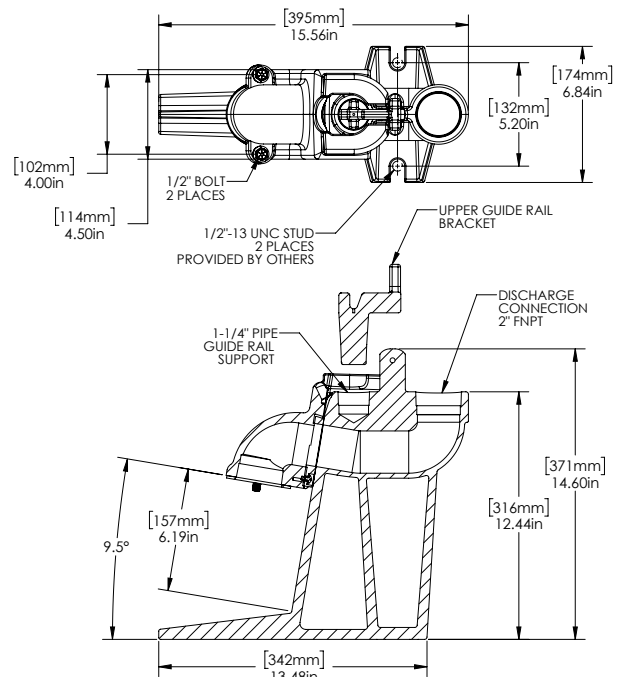
**Rail Support Bolts:** Stainless Steel

## Models

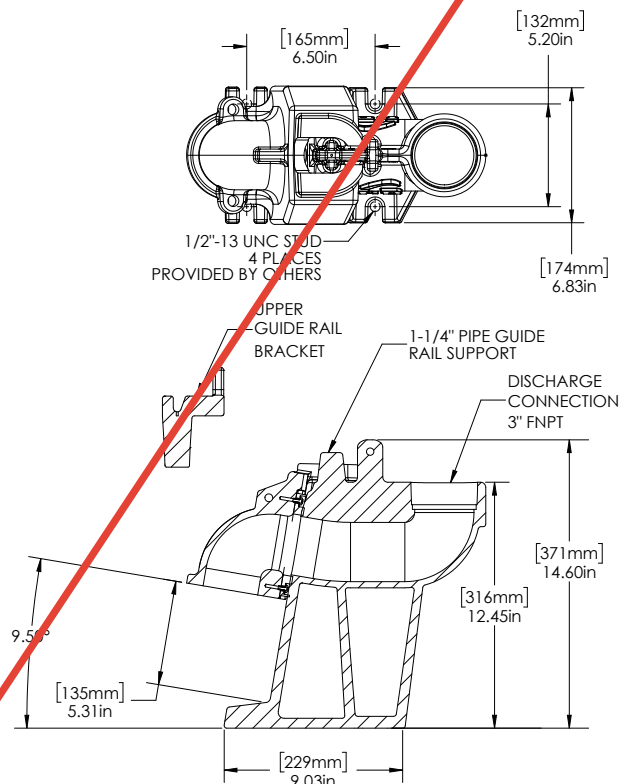
MODEL	DISCHARGE	SERIES
*GR22-FL	2"	FL50, FL60, FL70, FL100, FL150, FL200
*GR22NS-FL	2"	XFL50, XFL70, XFL100, XFL150
*GR22-LE	2"	LE70, LE100, LEH100, LEH150, LEH200
*GR22NS-LE	2"	XLE50, XLE70, XLE100, XLE150
GR22-S	2"	LE40, LE50, PRG
GR30	3"	LE70, LE100, LEH100, LEH150, LEH200
GR30NS	3"	XLE50, XLE70, XLE100, XLE150

\*2" Internal female thread on pump mating claw allows for mounting to other Liberty Pumps models and models from other manufacturers.

## Dimensional Data – GR22 - 2"



## Dimensional Data – GR30 - 3"



## GR22-S

Split pump claw allows fitment to PRG, LE40 and LE50-Series



Specifications subject to change without notice.

Copyright © Liberty Pumps, Inc. 2022 All rights reserved. LLIT006654-R11/22

Liberty Pumps - 7000 Apple Tree Avenue - Bergen, New York 14416  
Phone 800-543-2550 - Fax 585-494-1839 - [www.LibertyPumps.com](http://www.LibertyPumps.com)