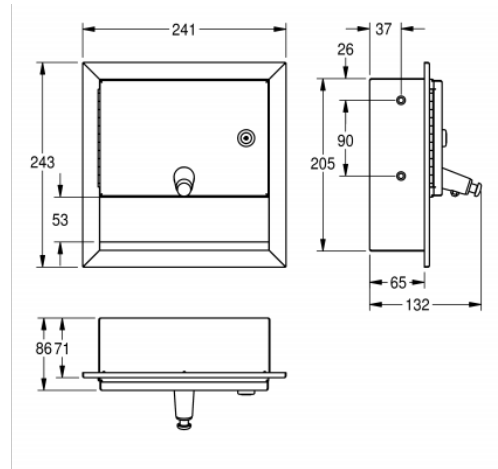


SOAP DISPENSER: RODX619E

RODX619E | 2000090069



Soap dispenser for recessed mounting, stainless steel, surface satin finished, material thickness 20 gauge folded front cover, cylinder lock with Franke standard key.

Suitable for liquid soaps and lotions, 1 litre soap tank, push button on front, including stainless steel screws and dowels.

TECHNICAL DATA

filling quantity	1 liter
gross weight	2.08 kg
lock	key-lock
material	STAINLESS-STEEL
material code	1.4301 Chrome Nickel steel V2A
material thickness	1/16"
net weight	1.85 kg
Overall front to back	5 3/16"
overall height	9 9/16"
Overall left to right	9 1/2"
Cabinet finish	satin finished
type of consumable	liquid soap
type of fixing	screw
type of mounting	recessed mounting
Type of operation	Manual operation
type of soap container	integrated refillable tank

PROJECT INFORMATION

Item Location _____

Project Number _____

Quote Number _____

Notes _____

Engineer's Approval