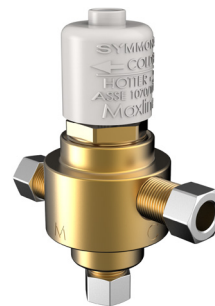


8210CK Thermostatic Mixing Valve Specification Submittal



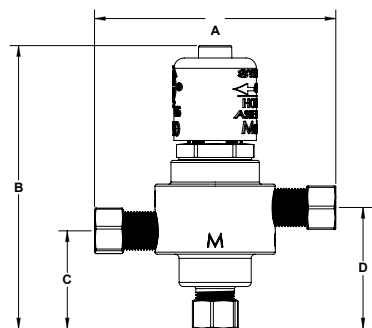
Model Numbers	Feature Highlights
<input type="checkbox"/> 8210CK <i>Thermostatic Mixing Valve</i>	<ul style="list-style-type: none"> • 3/8" compression connections • Integral checks • Stainless steel strainers for protection against suspended particles in supply lines • Thermal cartridge • Vandal resistant • Minimum flow rate 0.35 gpm (1.3L/min) <p>Inlet water temperature: HOT inlet range 120°F - 180°F (48.9°C - 82.2°C) COLD inlet range 39°F - 80°F (3.9°C - 26.7°C)</p> <p>Temperature control range: 59°F - 115°F (15°C - 46°C)</p> <p>Minimum supply pressure: 20 psi (138 kPa) Maximum supply pressure: 125 psi (862 kPa) Inlet to outlet temperature differential: 10°F (5.55°C)</p> <p><small>*According to US Senate bill S.3874, the term "lead free" is defined as follows: "not more than a weighted average of 0.25 percent lead when used with respect to the wetted surfaces of pipes, pipe fittings, plumbing fittings, and fixtures."</small></p>
Options/Modifications	
<input type="checkbox"/> B <i>Wall cabinet in white enamel finish including wall mounting bracket</i> <input type="checkbox"/> D <i>3/8" compression fitting to allow water bypass for hot and cold supply faucet</i> <input type="checkbox"/> NI <i>Rough Nickel finish</i> <input type="checkbox"/> T <i>Stainless steel cabinet in place of standard white cabinet</i>	
Note: Append appropriate suffix to model number.	
Warranty	Compliance
<p>Limited Lifetime - to the original end purchaser in consumer/residential installations. 5 Years - for industrial/commercial installations. Refer to www.symmons.com/warranty for complete warranty information.</p>	<p>-ASME A112.18.1/CSA B125.1 -ASSE 1017/CSA B125.3 -ASSE 1070/CSA B125.3 -NSF/ANSI 61.9; NSF/ANSI 372 -US S.3874</p>



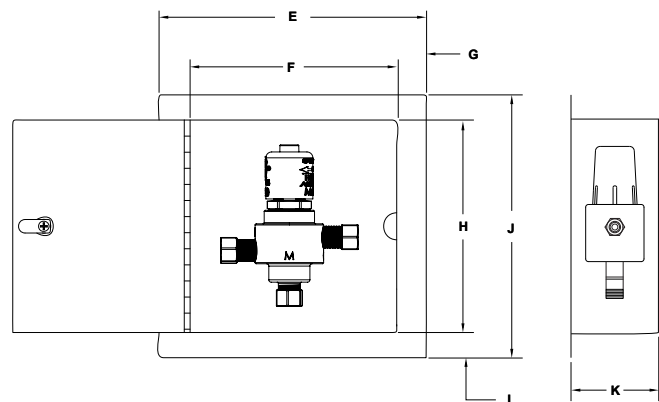
Table 1: Flow Rate - gpm (L/min)

Valve Model	Size Connection	Min. Flow Rate	Pressure Differential - psi (kPa)					
			5 psi (34 kPa)	10 psi (69 kPa)	20 psi (138 kPa)	25 psi (172 kPa)	30 psi (207 kPa)	45 psi (310 kPa)
8210CK	3/8" (10 mm)	0.35 gpm (1.3 L/min)	0.5 gpm (1.9 L/min)	1.0 gpm (3.8 L/min)	1.9 gpm (7.2 L/min)	2.4 gpm (9.0 L/min)	2.9 gpm (11.0 L/min)	3.5 gpm (13.2 L/min)

Dimensions



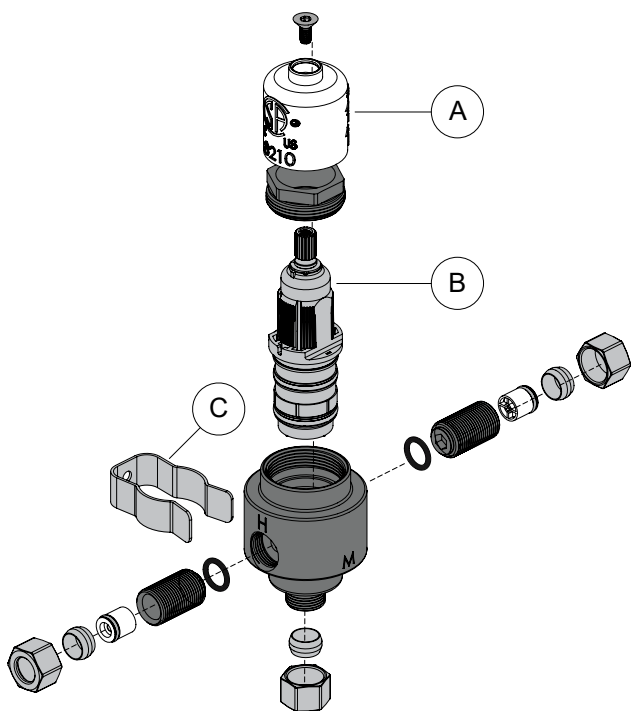
Wall cabinet (optional)



Measurements 8210CK	
A	3-1/2", 89 mm
B	4-1/8", 104 mm
C	1-7/16", 37 mm
D	1-3/4", 45 mm
E	12-1/4", 311 mm
F	10", 254 mm
G	1-1/8", 29 mm
H	10", 254 mm
I	1-1/8", 29 mm
J	12-1/4", 311 mm
K	4", 102 mm

Note: Dimensions are subject to change without notice.

Parts Breakdown



Replacement Parts 8210CK*****		
Item	Description	Part No.
A	Safety cap	TMX302
B	Cartridge	TMX303
C	Wall Mount Hanger Bracket	TMX304