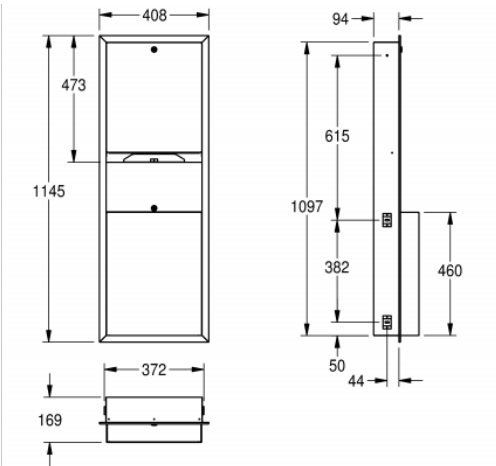


COMBINATION: RODX602E

RODX602E | 2000090060



Paper towel dispenser - waste bin combination for recessed mounting, stainless steel, surface satin finished, material thickness 22 gauge folded front cover, cylinder lock with Franke standard key, loading capacity 500 - 800 pcs. of paper depending on convolution, waste bin with approx. 23 litre capacity, including stainless steel screws and dowels.

TECHNICAL DATA	
combination part 1	paper towel dispenser
combination part 2	waste bin
filling quantity 1	800
filling quantity 1 uom	pieces
filling quantity 2	23
filling quantity 2 uom	liter
gross weight	12.68 kg
lock 1	key-lock
lock 2	key-lock
material	STAINLESS-STEEL
material code	1.4301 Chrome Nickel steel V2A
material thickness	1/16"
net weight	10.60 kg
Overall front to back	6 5/8"
overall height	45 1/16"
Overall left to right	16 1/16"
Cabinet finish	satin finished
type of consumable 1	paper towel
type of fixing	screw
type of mounting	recessed mounting

PROJECT INFORMATION

Item Location \_\_\_\_\_

Project Number \_\_\_\_\_

Quote Number \_\_\_\_\_

Notes \_\_\_\_\_

Engineer's Approval

