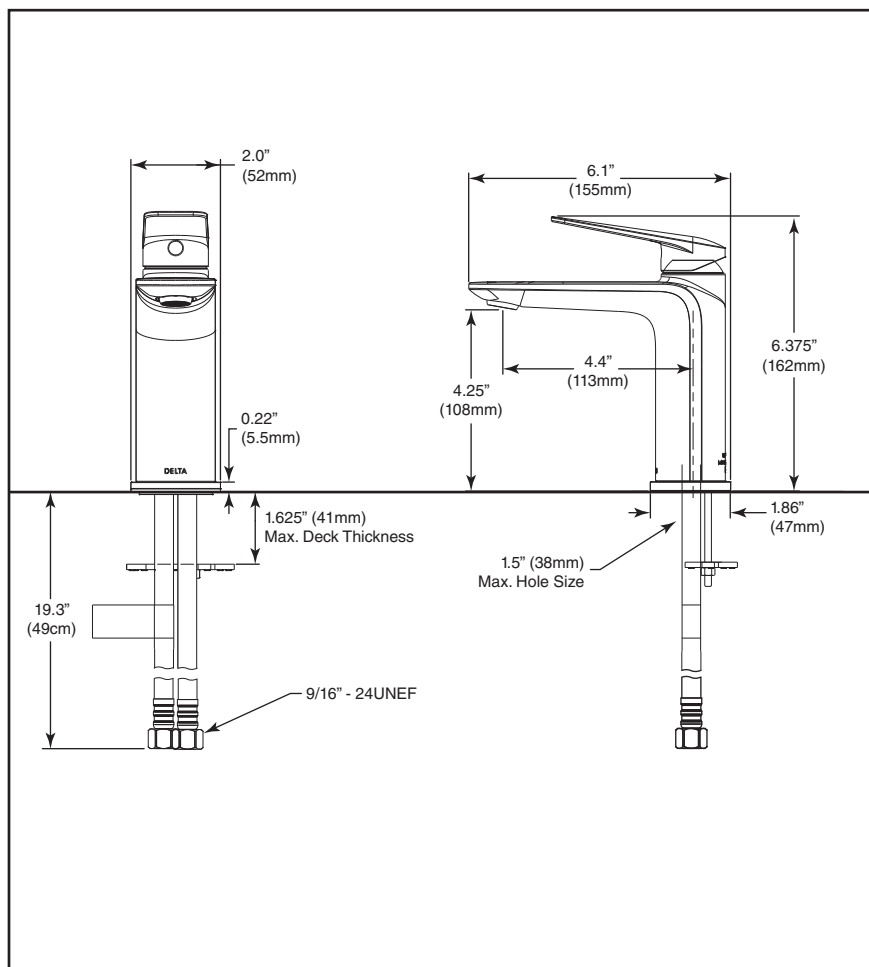




Submitted Model No.: \_\_\_\_\_

Specific Features: \_\_\_\_\_



see what Delta can do™

## BATHROOM FAUCETS

- Portage™ Bath Family
- Single Handle Deck Mount

### STANDARD SPECIFICATIONS:

- Max flow rate 1.2 gpm @ 60 psi, 4.5 L/min @ 414 kPa (Aerated pressure compensating)
- Standard single hole mount or three hole mount with optional - 6" (152mm) Escutcheon (sold separately)
- 1 5/8" (41mm) max. deck thickness
- Ceramic cartridge
- Red/blue indicator markings
- Metal lever handle
- Solid brass body
- 19" (483mm) long flexible supply lines with 3/8" supply fittings
- Rigid Spout
- Less pop-up, no pop-up hole

### OPTIONAL ACCESSORIES:

(sold separately)

- RP101342▲ - 6" (152mm) Escutcheon
- 72173▲ - push pop-up with overflow
- 33W576▲ - push pop-up with overflow holes

### WARRANTY

- Parts and Finish - Lifetime limited warranty; or for commercial purchasers, 10 years for multi-family residential (apartments and condominiums) and 5 years for all other commercial uses, in each case from the date of purchase.
- Electronic Parts and Batteries (if applicable) - 5 years from the date of purchase; or for commercial purchasers, 1 year from the date of purchase. No warranty is provided on batteries.



### COMPLIES WITH:

- ASME A112.18.1 / CSA B125.1
- EPA WaterSense®
- Verified compliant with 0.25% weighted average Pb content regulations
- ♿ Indicates compliance to ICC/ANSI A117.1

▲ Designate Proper Finish Suffix

Delta Faucet Company reserves the right (1) to make changes in specifications and materials, and (2) to change or discontinue models, both without notice or obligation. Dimensions are for reference only. See current full-line price book or [www.deltafaucet.com](http://www.deltafaucet.com) for finish options and product availability.

DSP-L-571LF-LPU, Rev. A

### Delta Faucet Company

55 E. 111th Street, Indianapolis, IN 46280  
350 South Edgeware Road, St. Thomas, ON N5P 4L1  
© 2020 Delta Faucet Company