

**Swing C**  
**Widespread Faucet with Pop-Up Drain, 1.2 GPM**  
 Finishes : **brushed nickel**    Part no. : **06117820**



## Description

### Features

- Aerated spray
- maximum Flow rate at 44 PSI: 1.2 GPM
- 90° ceramic valves
- pop-up waste set G 1

## Item details

### Technology



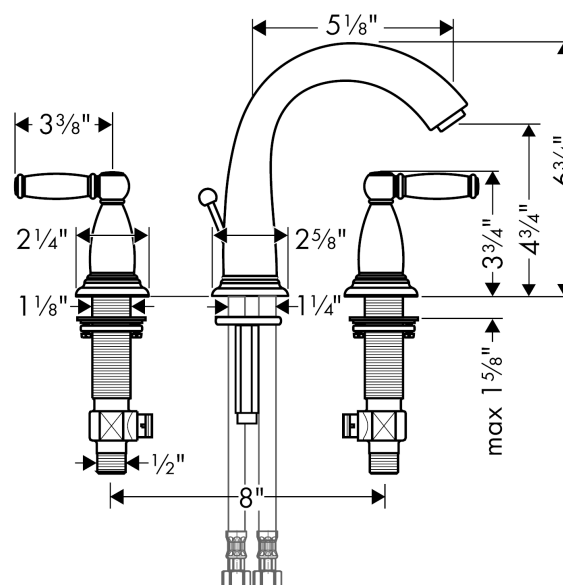
### Compliance



## Product image



## Scale drawing

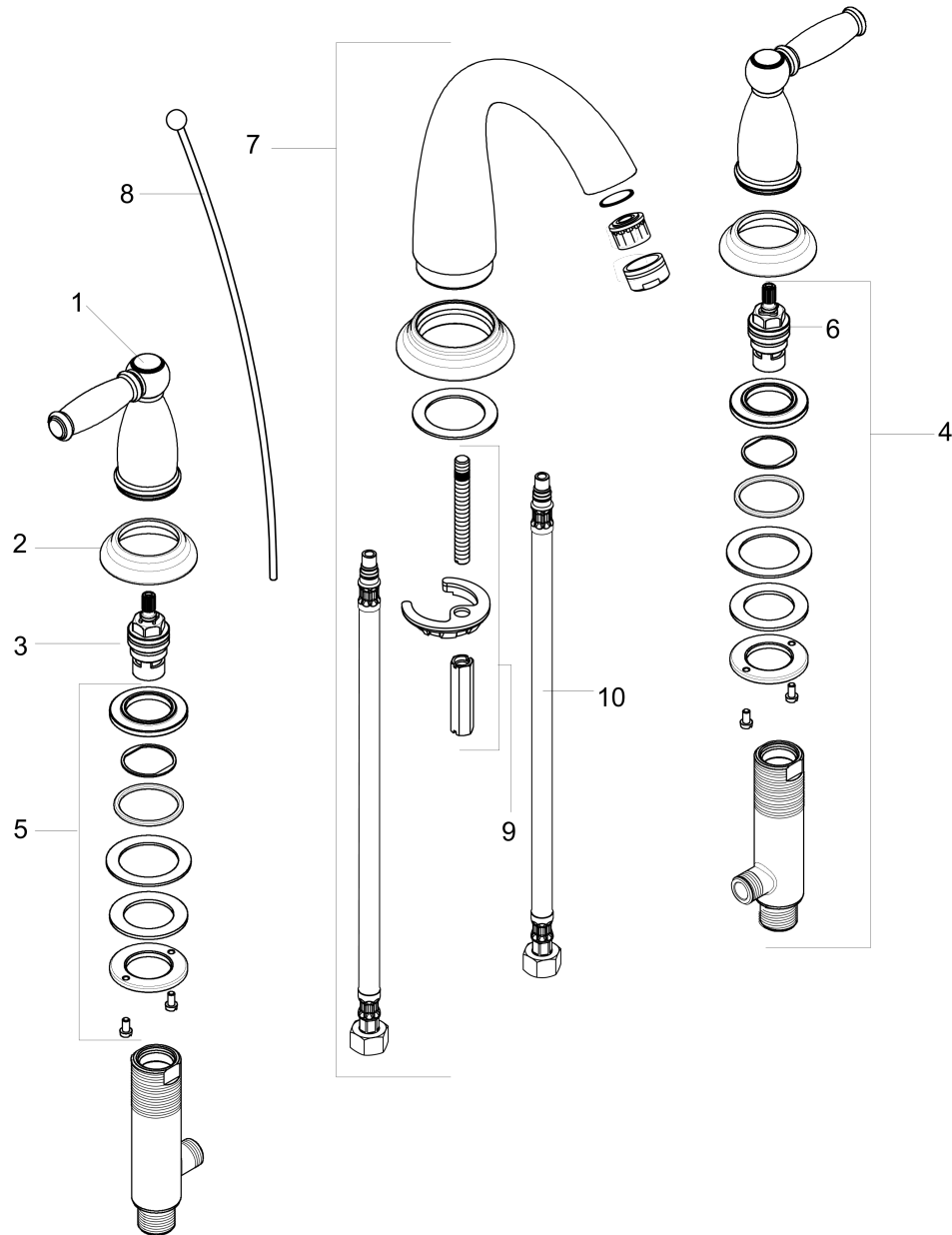


**Swing C**  
**Widespread Faucet with Pop-Up Drain, 1.2 GPM**  
 Finishes : **brushed nickel**    Part no. : **06117820**



## Exploded drawing

Year of production: >07/16



## Swing C

**Widespread Faucet with Pop-Up Drain, 1.2 GPM**

Finishes : **brushed nickel** Part no. : **06117820**



### Spare parts list

Year of production: >07/16

Pos.	Description	Part no.	Price	PU
1	handle	88612820	-	1
2	escutcheon	88600820	-	1
3	shut off unit right closing	94009000	-	1
4	valve	88503000	-	1
5	fixing set for shut off unit	88511000	-	1
6	shut off unit left closing	94008000	-	1
7	spout cpl.	88603820	-	1
8	aerator M24x1 (4,5 l/min)	92877820	-	-
9	pull rod	88541820	-	1
10	fixing set	88508000	-	1
11	connection hose 450 mm	88596000	-	1
a	pop up waste	88509820	-	1