

**BF2083-XXX**  
**PB3 Pressure Balance Shower System (without valve)**

**SPECIFICATIONS**

**Components included**

- 104848-XXX\*: Round decorative trim for ½" pressure balance valve with volume control – cartridge included
  - BF1759-XXX\*: 100 mm (4") showerhead and 186 mm (7 5/16") 45° wall arm with round flange
  - 106540-XXX\*: Round «slip fit» tub spout with diverter
- \* XXX means that the finish color must be specified.

**Colors (Finishes)**

- Chrome: BF2083-110
- Matte Black: BF2083-160

**Certifications**

The specified model meets or exceeds the following standards;



CSA B125.1  
ASME A112.18.1



See the following sheets for the technical features of each component.

**Installation Notes**

This product must be installed following the installation instructions provided.

**WARRANTY**

Kalia Inc. guarantees all aspects of its products to be free of defects in material and workmanship for normal residential use. **Refer to the warranty included with the Kalia products for details.**

**Features**

- Solid brass construction
- Total adjustment of 25 mm (1")
- Pressure balance with volume control ceramic cartridge

**Colors (Finishes)**

- Chrome: 104848-110
- Matte black: 104848-160

**Maximum flow rate**

- 22.5 L/min (5.9 gpm) at 60 psi

**Certifications**

The specified model meets or exceeds the following standards;

ADA 

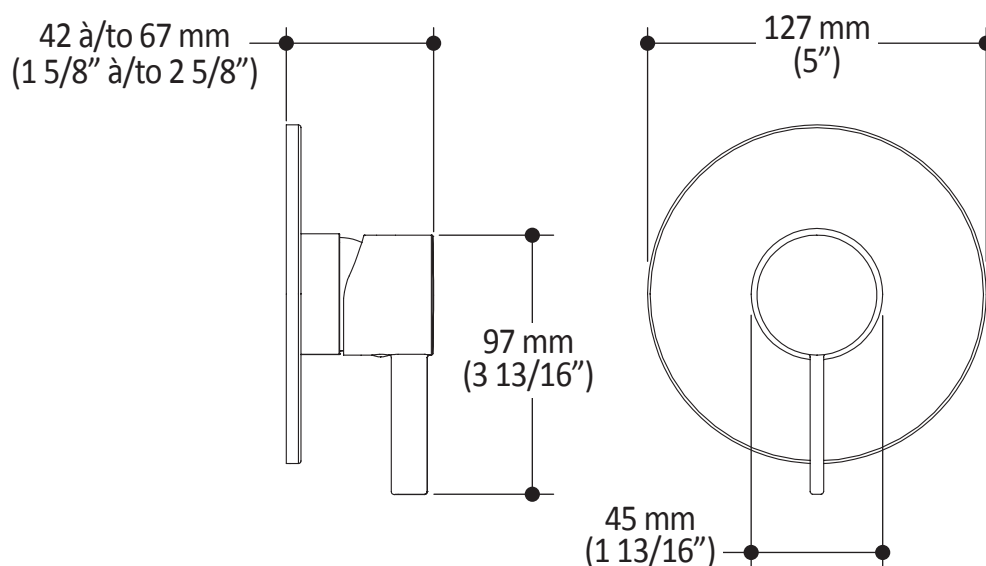

**Installation Notes**

This product must be installed following the installation instructions provided.

**WARRANTY**

Kalia Inc. guarantees all aspects of its products to be free of defects in material and workmanship for normal residential use. **Refer to the warranty included with the Kalia products for details.**

Product dimensions:



**Important:** Dimensions are approximated and are subject to changes. Please refer to the installation instructions.

# BF1759 Showerhead with 45° wall arm with round flange

## SPECIFICATIONS

### Features

#### 45° Wall arm (105228-XXX):

- Male water inlet 1/2NPT
- Male water outlet G1/2

#### Arm flange (102898-XXX)

#### Showerhead (105009-XXX):

- Female water inlet G1/2
- Diameter of 100 mm (4")
- Soft tips for easy cleaning of limescale
- Adjustable orientation swivel

### Colors (Finishes)

- Chrome: BF1759-110
- Matte black: BF1759-160

### Maximum flow rate

- 7.6 L/min (2 gpm) at 60 psi

### Certifications

*The specified model meets or exceeds the following standards;*



CSA B125.1  
ASME A112.18.1



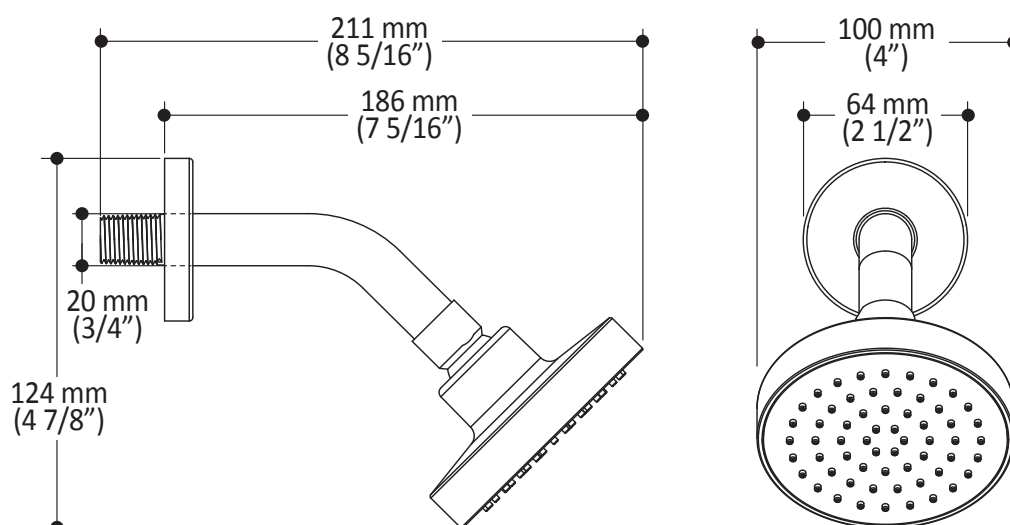
### Installation Notes

This product must be installed following the installation instructions provided.

### WARRANTY

Kalia Inc. guarantees all aspects of its products to be free of defects in material and workmanship for normal residential use. **Refer to the warranty included with the Kalia products for details.**

### Product dimensions:



**Important :** Dimensions are approximated and are subject to changes. Please refer to the installation instructions.

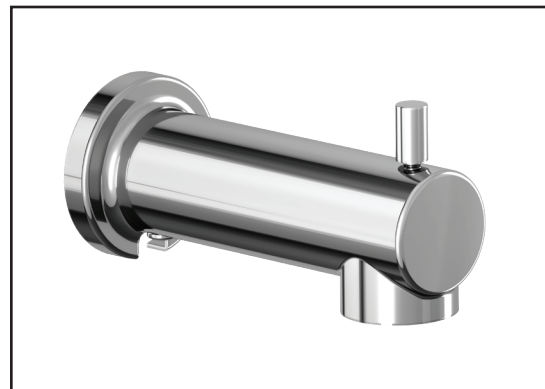
**106540**  
**Round Tub Spout with Diverter**  
***SPÉCIFICATIONS***

**Features**

- Water 1/2" cooper inlet
- "Slip fit" Installation

**Colors (Finishes)**

- Chrome: 106540-110
- Matte black: 106540-160



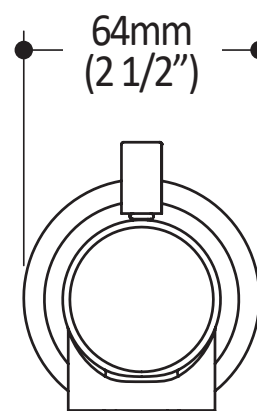
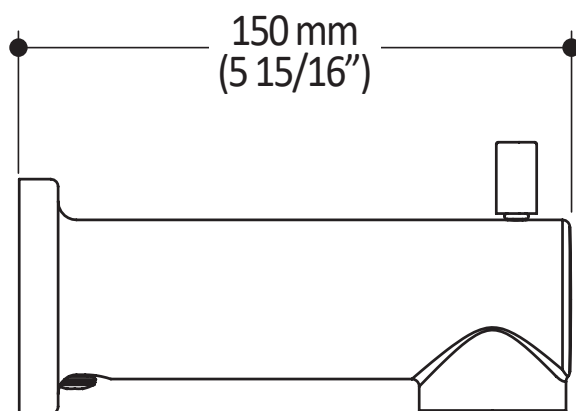
**Installation Notes**

This product must be installed following the installation instructions provided.

**WARRANTY**

Kalia Inc. guarantees all aspects of its products to be free of defects in material and workmanship for normal residential use. **Refer to the warranty included with the Kalia products for details.**

*Product dimensions:*



**Important:** Dimensions are approximated and are subject to changes. Please refer to the installation instructions.