



© SFA Saniflo Inc.

Example of installation. Follow local plumbing codes for actual install.

The **Sanishower drain pump** is used to pump gray water away from a variety of fixtures in **residential applications**. The system is able to discharge the waste up to **12 feet vertical and/or 100 feet horizontal**.

- **Discharges the waste through a ¾" or 1" rigid pipe. A non-return valve is included** on the discharge fitting assembly provided with the system. Unlike the other models, the discharge for this model is on the side of the enclosure.
- Has been designed to be **vented through a 1¼" or 1½" pipe**. The vent output is located on the top of the pump. The case has a knockout which along with the rubber adapter provided is used to connect to the vent pipe. Note: The use of mechanical vents, air admittance valves or similar devices is not permitted.
- Discharges **gray water from a shower or sink**. The gray water will drain into the system **via two 2" inlets (with built-in check valves)** on either side of the housing.

Medium Duty

TECHNICAL SPECIFICATIONS

Pump type: Drain pump

Electrical: 120 V – 60 Hz / 5.5 Amps (Max)

Motor: 0.2 HP oil-filled thermally protected motor

Capacitor rating: 25 microfarad

Operating Temperature: 104°F (110°F Max.)

Power cord length: 48 1/2 inches

Noise level: ≤ 44 dBA (Lp) (measured at 3 ft.)





Discharge pipe diameter: $\frac{3}{4}$ " or 1"

Discharge rate at 12 ft: 14 GPM

Discharge rate at 3 ft: 20 GPM

Shut-off head: 26 ft.

Normal running time: 3-5 seconds (short bursts)

Capacity: 0.9 gallons

Inlets: 2" (side)

Method of activation: Membrane/microswitch

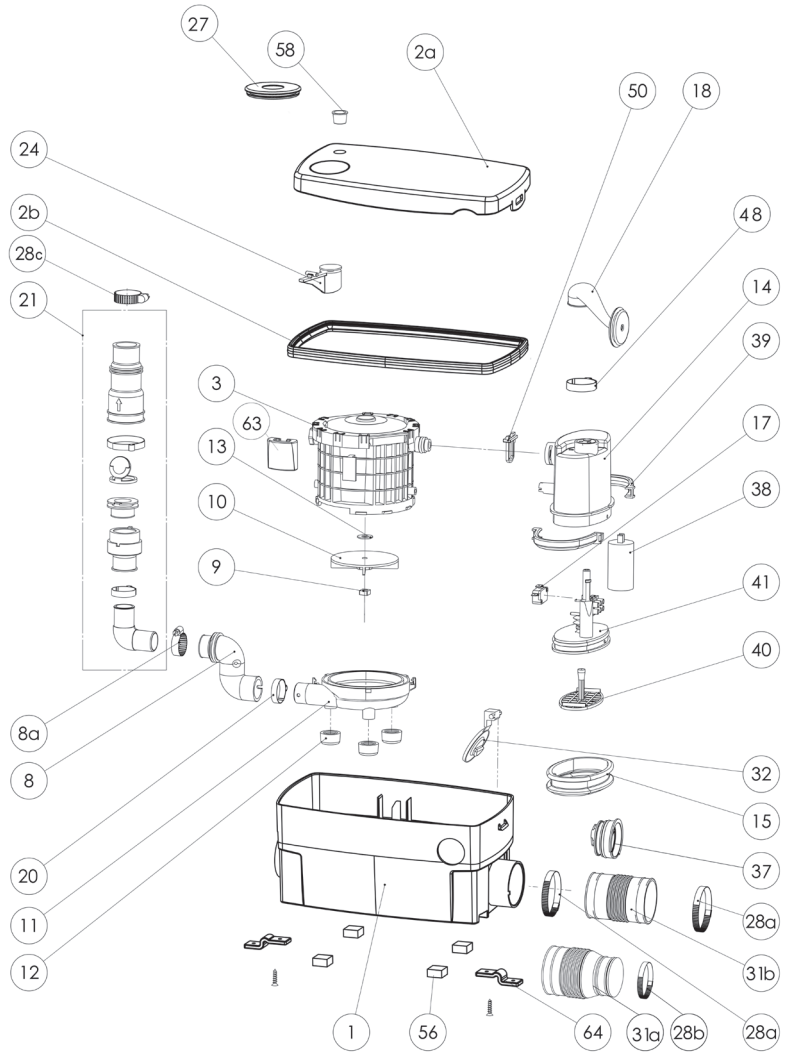
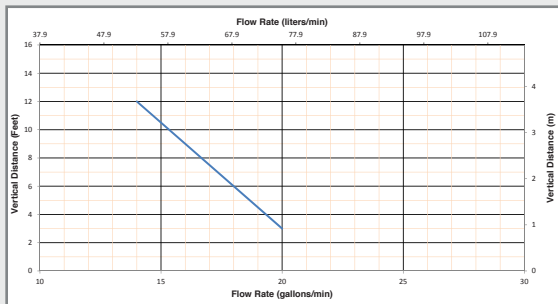
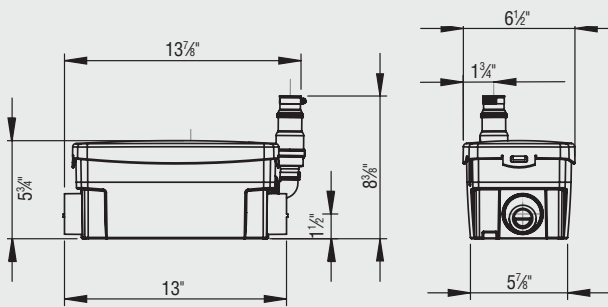
Shower base height: 5" min.

Weight: 12 lbs.

Certifying agencies: CSA (IPC, NSPC)

Recommended accessories: Descaler

Connections: Sink, shower

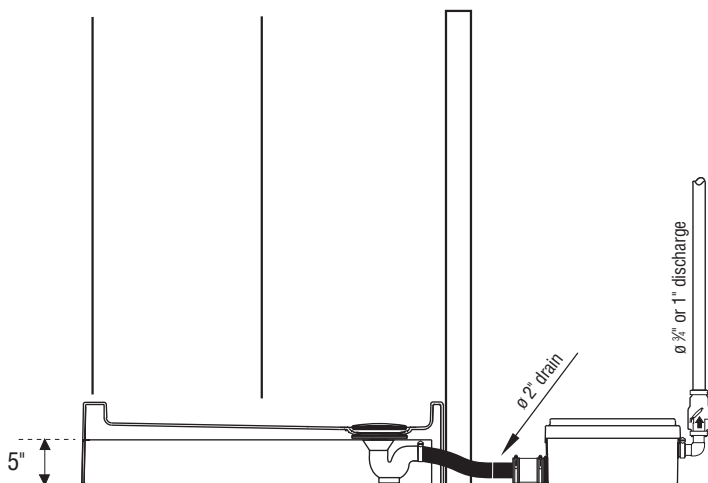


PLEASE CALL US TOLL-FREE AT 800-571-8191 (US) / 800-363-5874 (CDN)
TO PURCHASE PARTS REFERENCED ABOVE

AN EASY SOLUTION FOR A REMOTE SHOWER OR SINK INSTALLATION OR FOR ANY GRAY WATER APPLICATION

Easy to install and small enough to fit underneath a shower base. Ideal for **medium duty applications**.

Pre-assembled system with a **low inlet and built-in check valve**. Typical installations include the discharge of gray water from **showers, sinks and pedicure chairs**.



FOR ADDITIONAL TECHNICAL QUESTIONS, PLEASE CALL 800-571-8191