



TRIMBROOK URINAL

- Vitreous china
- Low-consumption (3.8 Lpf/0.83 gpf)
- Flushing rim
- Siphon jet flush action
- Extended sides for privacy
- 18mm (3/4") inlet spud
- Outlet connection threaded 50mm (2") inside (NPTF)
- 2 wall hangers
- Fixture only
 (Flush valve shown not included)

☐ **6561 017** Top spud (Illustrated)

☐ **6565 000** Back spud

Nominal Dimensions:

445 x 356 x 679mm
 (17-1/2" x 14" x 26-3/4")

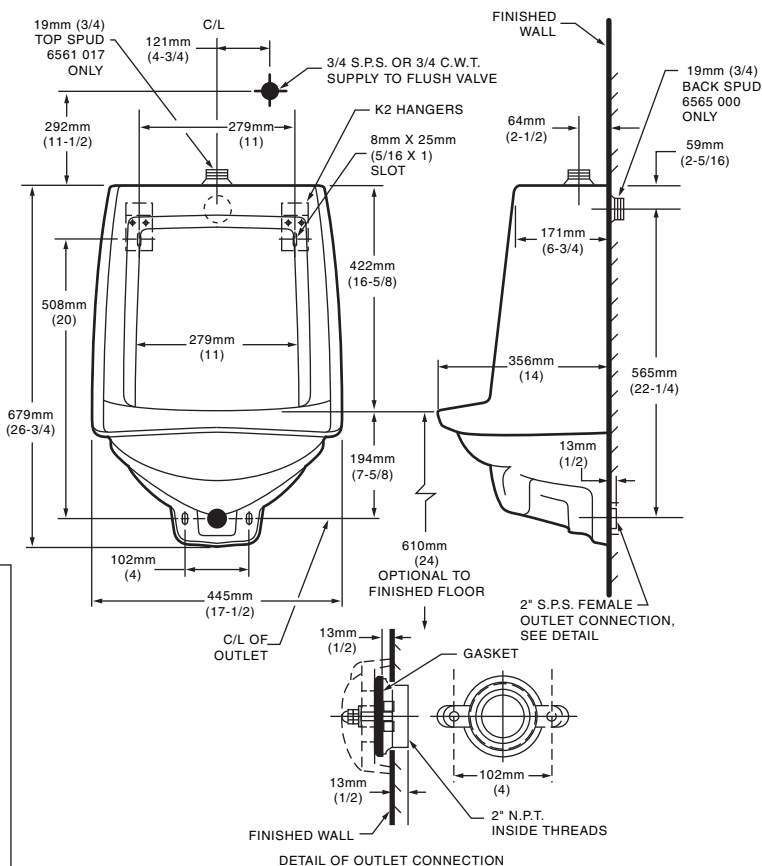
Recommended working pressure--
 between 20 psi and 80 psi when flushing.

**Meets or Exceeds the Following Specifications:
 Compliance Certifications -**

- ASME A112.19.2M (and 19.6M)
- CAN/CSA B45 series
- 1995 National Building Code, section 3.7 and CAN/CSA-B651-M90 and OBC 3.7.
- Meets CSA flush requirements with low flow flush valve

To Be Specified

- ☐ Colour:
- ☐ Flush Valve: Sloan Royal 186-1
 Sloan 195-1/WB1-A (back spud)
- ☐ Alternative Flush Valve:
- ☐ Stainless Steel Strainer: 047068-0070A
- ☐ Carrier if required (by others):



NOTES:
 FLUSH VALVE NOT INCLUDED AND MUST BE ORDERED SEPARATELY.
 PROVIDE SUITABLE REINFORCEMENT FOR ALL WALL SUPPORTS.



● When installed so top of rim is 432mm (17") from finished floor.
**MEETS THE AMERICAN DISABILITIES ACT GUIDELINES AND
 ANSI A117.1 ACCESSIBLE AND USEABLE BUILDINGS AND
 FACILITIES - CHECK LOCAL CODES.**

IMPORTANT: Dimensions of fixtures are nominal and may vary within the range of tolerances established by ANSI Standard A112.19.2. These measurements are subject to change or cancellation. No responsibility is assumed for use of superseded or voided pages.