



BARRIER FREE

MURRO™ UNIVERSAL DESIGN WALL-HUNG SINK WITH EVERCLEAN


VITREOUS CHINA

**MURRO™ UNIVERSAL DESIGN
WALL-HUNG SINK WITH EVERCLEAN**

- Vitreous chinawith EverClean
- Available with rear and sealed overflow
- Recessed self-draining deck
- For concealed arm or wall support
- Concealed arm support (by others)
- Shown with optional shroud/knee contact guard 0059 020EC available



-  **0954 004EC** (Illustrated)
Faucet holes on 102mm (4") Centres
-  **0954 123EC** Extra RH Hole
Faucet holes on 102mm (4") Centres
-  **0954 121EC** Extra LH Hole
Faucet holes on 102mm (4") Centres
-  **0954 904EC** Less Overflow
Faucet holes on 102mm (4") Centres


-  **0958 008EC**
Faucet holes on 203mm (8") Centres
-  **0958 908EC** Less Overflow
Faucet holes on 203mm (8") Centres

- ☐ **0955 001EC** Centre hole only
- ☐ **0955 123EC** CHO with extra RH Hole
- ☐ **0955 121EC** CHO with extra LH Hole
- ☐ **0955 901EC** CHO Less Overflow

Nominal Dimensions: 520mm (20-1/2") deep,
540mm (21-1/4") wide

Bowl sizes:

394mm (15-1/2") wide, 343mm (13-1/2")
front to back, 127mm (5") deep

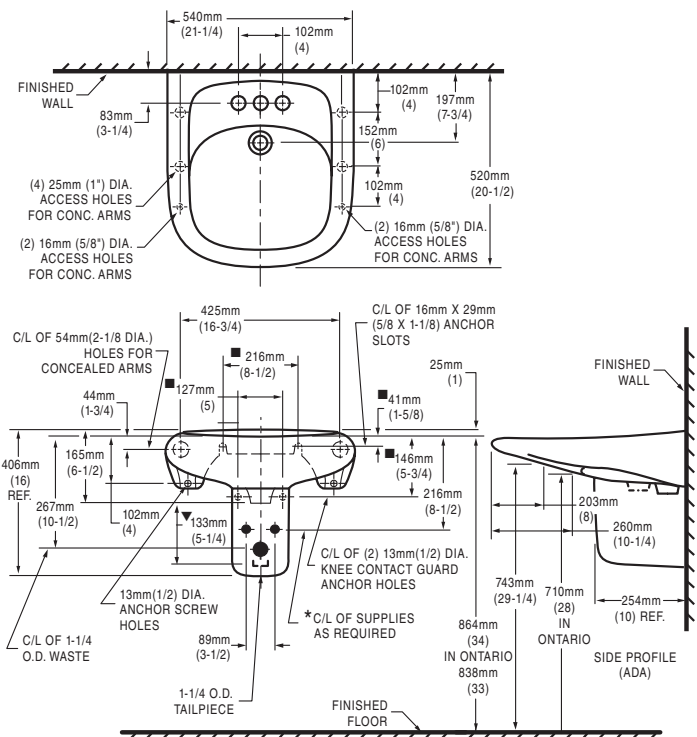
-  **0059 020EC** Shroud/Knee Contact Guard
(Must be specified separately)

**Compliance Certifications -
Meets or Exceeds the Following Specifications:**

- ASME A112.19.2M for Vitreous China Fixtures
- cUPC/CSA B45.1-2008
- 1995 National Building Code, section 3.7 and CAN/CSA-B651-M90 and OBC 3.7.

To Be Specified

- ☐ Colour:
- ☐ Optional Shroud/Knee Contact guard: 0059 020EC
- ☐ Faucet* and Faucet Finish:
- ☐ Supplies & Trap 1-1/4":
- ☐ Concealed Arm Support Carrier (by others)



* See faucet section for additional models available



- Top of front rim mounted 864mm (34") maximum from finished floor.

**MEETS THE AMERICAN DISABILITIES ACT GUIDELINES
AND ANSI A117.1 REQUIREMENTS FOR PEOPLE WITH
DISABILITIES**

For Universal Design Options, top of rim may be mounted at 813mm (32") from finished floor to meet ADA and ANSI A117.1 requirements. A 864mm (34") mounting height is required for California Title 24 and other more stringent knee space requirements. A 838mm (33") mounting height is required for Ontario. Check local codes.

NOTES:

- * LOOSE KEY ANGLE STOPS, LESS WALL ESCUTCHEONS. SUPPLIES REQUIRED.
SHROUD/KNEE CONTACT GUARD 0059 020EC NOT INCLUDED AND MUST BE ORDERED SEPARATELY

- SUITABLE FOR REINFORCEMENT ONLY, ACTUAL DIMENSIONS MUST BE TAKEN FROM FIXTURE

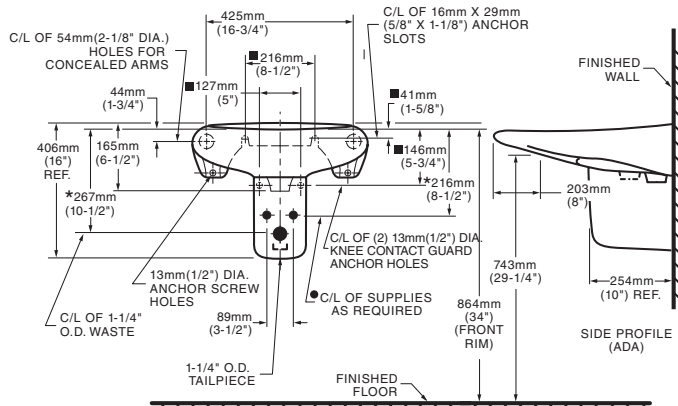
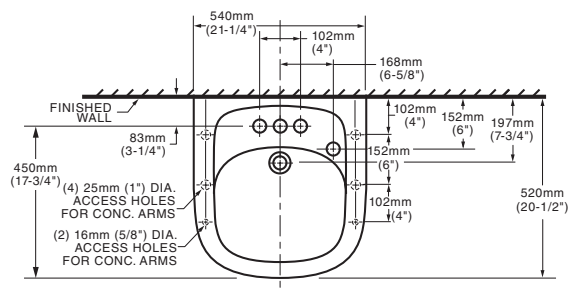
DIMENSIONS SHOWN FOR LOCATION OF SUPPLIES AND "P" TRAP ARE SUGGESTED.
FAUCETS NOT INCLUDED AND MUST BE ORDERED SEPARATELY.
PROVIDE SUITABLE REINFORCEMENT FOR ALL WALL SUPPORTS.

IMPORTANT: Dimensions of fixtures are nominal and may vary within the range of tolerances established by ANSI Standard A112.19.2

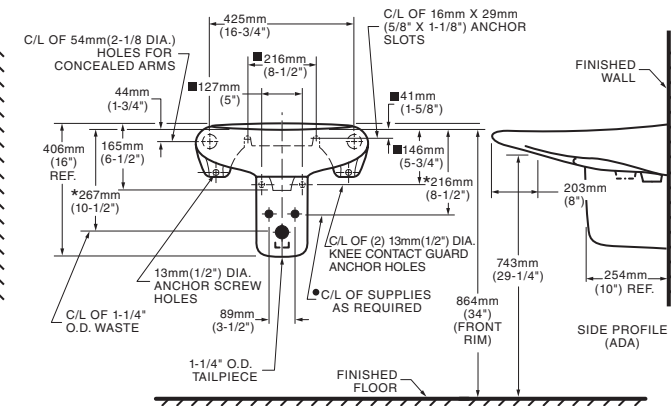
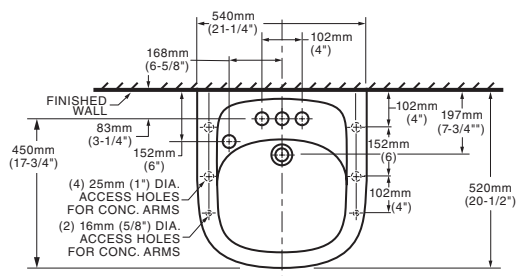
These measurements are subject to change or cancellation. No responsibility is assumed for use of superseded or voided pages.



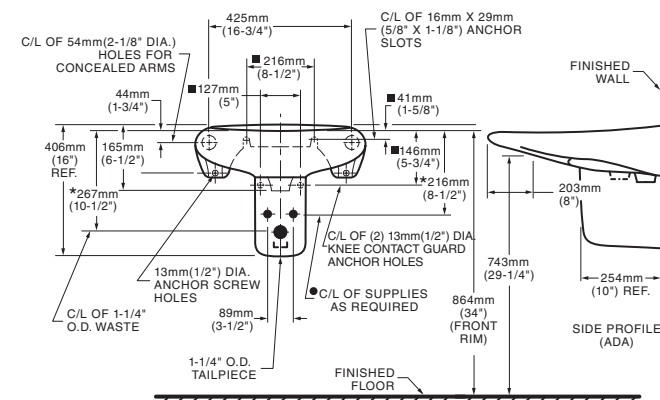
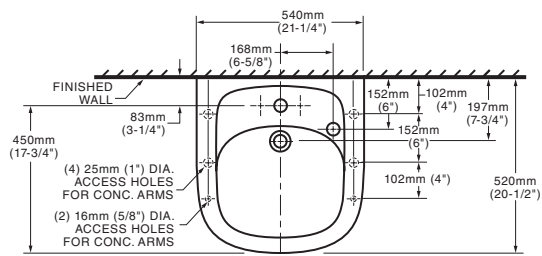
0954 123EC 4" (102mm) Ctrs Extra Right Hand Hole



0954 121EC 4" (102mm) Ctrs Extra Left Hand Hole



0955 123EC Centre Hole With Extra Right Hand Hole



0955 121EC Centre Hole With Extra Left Hand Hole

