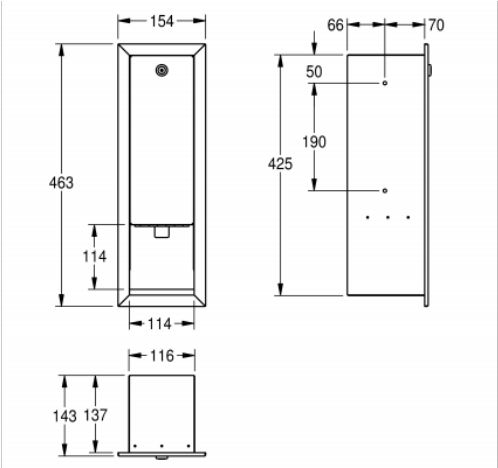


SOAP DISPENSER: RODX618E

RODX618E | 2000090066



Soap dispenser for recessed mounting, stainless steel, surface satin finished, material thickness 20 gauge folded front cover, cylinder lock with Franke standard key.
Suitable for liquid soaps and lotions, 0.8 litre soap tank, lever to pull, including stainless steel screws and dowels.

TECHNICAL DATA	
filling quantity	800 ml
gross weight	2.52 kg
lock	key-lock
material	STAINLESS-STEEL
material code	1.4301 Chrome Nickel steel V2A
material thickness	1/16"
net weight	2.34 kg
Overall front to back	5 5/8"
overall height	18 1/4"
Overall left to right	6 1/16"
Cabinet finish	satin finished
type of consumable	liquid soap
type of fixing	screw
type of mounting	recessed mounting
Type of operation	Manual operation
type of soap container	integrated refillable tank

PROJECT INFORMATION

Item Location

Project Number

Quote Number

Notes

Engineer's Approval

