



**T184502 Bath/Shower Trim Shown**

## GENERAL DESCRIPTION:

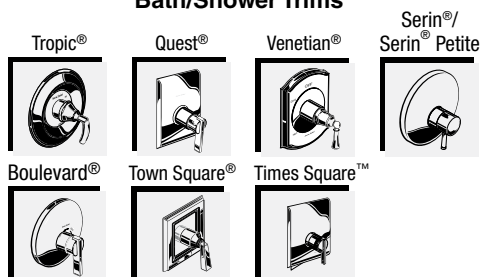
### TRIM KIT

Brass 8" (203mm) Square Rain Showerhead at 2.08gpm/9.5L/min. max. flow rate. Metal slip-on diverter spout. Available with metal lever handle. Metal wall escutcheon.

### ROUGH VALVE BODY

Cast brass body, washerless ceramic disc valve cartridge with back-to-back capability, integrated check valves and hot limit safety stop. Cycles from "off" to "cold" to "hot". Pressure balancing cartridge maintains constant output temperature in response to changes in relative hot and cold supply pressure. 1/2" inlets and outlets (choice of direct sweat, threaded, or PEX). Available with screwdriver stops. Rough-in plaster guard designed for use as thin-wall mounting adaptor.

#### Valve body will accept a variety of decorative Bath/Shower Trims



## MODEL NUMBER:

### TRIM KITS:

- ☐ **T184 502 Times Square BATH/SHOWER Trim Kit**  
Metal Lever Handle. LESS Valve Body.
- ☐ **T184 501 Times Square SHOWER ONLY Trim Kit**  
Metal Lever Handle. LESS Valve Body.
- ☐ **T184 500 Times Square VALVE ONLY Trim Kit**  
Metal Lever Handle. LESS Valve Body.

### ROUGH VALVES:

- ☐ **R110 Pressure Balance Rough Valve Body only**  
Direct sweat inlets/outlets. LESS trim.
- ☐ **R110SS Pressure Balance Rough Valve Body only with Screwdriver stops**  
Direct sweat inlets/outlets. Screwdriver stops. LESS trim.
- ☐ **R115 Pressure Balance Rough Valve Body only**  
Female thread inlets/outlets. LESS trim.
- ☐ **R115SS Pressure Balance Rough Valve Body only with Screwdriver stops**  
Female thread inlets/outlets. Screwdriver stops. LESS trim.
- ☐ **R117 Pressure Balance Rough Valve Body only**  
PEX inlets/Direct sweat outlets. LESS trim.
- ☐ **R117SS Pressure Balance Rough Valve Body only with Screwdriver stops**  
PEX inlets/Direct sweat outlets. Screwdriver stops. LESS trim.

## PRODUCT FEATURES:

**Showerhead:** Brass construction, durable quality that will last a lifetime.

**Rough Valve Body:** Durable quality that will last a lifetime. Ideal material for prolonged contact with water.

**Ceramic Disc Valve Cartridge:** Assures a lifetime of drip-free performance. Allows easy control over both water temperature and volume.

**Pressure Balancing Valve Cartridge:** Maintains constant output temperature in response to changes in relative hot and cold supply pressure. Diaphragm system with integrated check valves engineered to eliminate cross flow. Avoids failure due to mineral deposits - ideal for use in hard water.

**Back-to-Back Capability:** Hot and cold can be reversed quickly and easily.

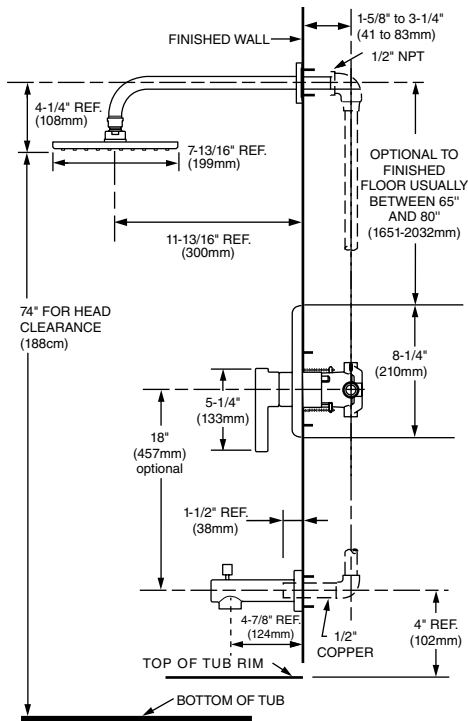
**Adjustable Hot Limit Safety Stop:** Limits the amount of hot water allowed to mix with cold. Reduces the risk of accidental scalding.

**Exclusive Plaster Guard:** Plaster guard is designed to protect valve during installation and serve as a mounting plate for thin-wall installations. Two piece design allows valve to be tested prior to trim installation.

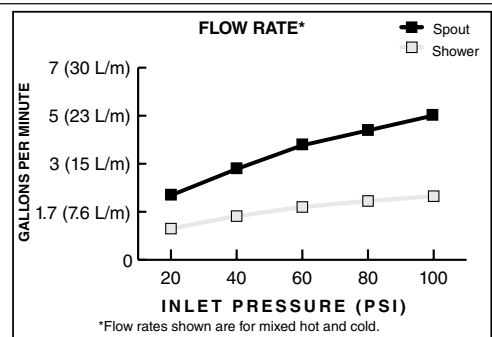
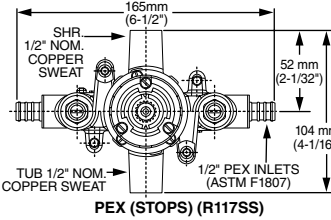
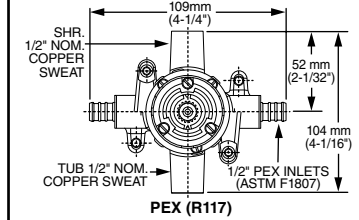
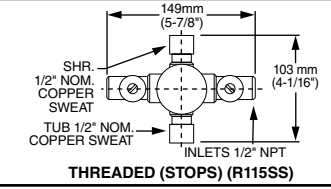
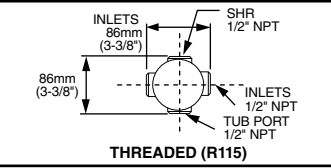
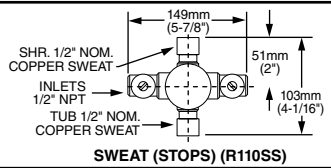
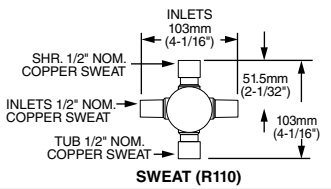
**Wide Rough-in Range:** From 1-5/8" to 3-1/4" (41mm to 83mm).

## SUGGESTED SPECIFICATION:

Bath/shower faucet shall feature brass square rain showerhead with Max. 2.08gpm/9.5L/min. flow rate. Shall feature a cast brass valve body. Shall feature ceramic disc valve cartridge which is capable of back-to-back installation. Faucet shall be equipped with pressure balancing cartridge engineered to eliminate cross flow and avoid failure due to mineral deposits. Shall also feature hot limit safety stop. Faucet shall be: Rough Valve Body - American Standard Model # R11\_\_\_\_, Trim Kit - American Standard Model # T18450\_\_\_\_.



**VALVE BODY OPTIONS**



**CODES AND STANDARDS**

These products meet or exceed the following codes and standards:

**ANSI A 117.1**  
**ASME A112.18.1**  
**IAPMO (cUPC)**

**ASSE 1016**  
**CSA B125.1**



**BARRIER FREE B651-12**

Modifications		Parts Suffix*
IPS Spout		__IPT
Factory Installed Decal Ring (Red/Blue)		__WD

\*To modify a product, add suffix after the 4<sup>th</sup> digit (ex. T0641**IP**P502.002)

TRIM KITS *	Product Number	Description	Finish Options	
			Polished Chrome	PVD Satin Nickel
			002	295
	T184 502	Bath/Shower Trim Kit. Metal Lever Handle. FloWise Showerhead. LESS Valve Body.		
	T184 501	Shower Only Trim Kit. Metal Lever Handle. FloWise Showerhead. LESS Valve Body.		
	T184 500	Valve Trim Only . Metal Lever Handle. LESS Valve Body.		

ROUGH VALVE BODIES	Product Number	Description
	R110	Rough Valve Body less trim. Direct Sweat inlets/outlets.
	R110SS	Rough Valve Body less trim. Direct Sweat inlets/outlets with Screwdriver Stops.
	R115	Rough Valve Body less trim. Female Thread inlets/outlets.
	R115SS	Rough Valve Body less trim. Female Thread inlets/outlets with Screwdriver Stops.
	R117	Rough Valve Body less trim. PEX inlets/ Direct Sweat outlets.
	R117SS	Rough Valve Body less trim. PEX inlets/ Direct Sweat outlets with Screwdriver Stops.

\* TRIM & ROUGH MUST BE ORDERED SEPARATELY.