

## STUDIO® CONCEALED TRAPWAY DUAL FLUSH RIGHT HEIGHT™ ROUND FRONT TOILET WITH SEAT VITREOUS CHINA

### STUDIO® CONCEALED TRAPWAY DUAL FLUSH RIGHT HEIGHT™ ROUND FRONT TOILET WITH SEAT

#### 2795 204

- Vitreous china
- **LXP (Luxury Performance) Toilet**
- Combination dual flush bowl and tank with seat
- 12" (305mm) rough-in
- Right Height™ Round Front siphon action dual flush bowl with smooth-sided, concealed trapway
- High efficiency, low consumption Full Flush 1.3gpf/6.0Lpf Conserving Flush 0.9 gpf/4.1Lpf, utilizes 21% less water
- Meets EPA WaterSense® criteria (pending)
- EverClean® Surface
- Qualifies in LEED Program
- PowerWash™ rim scrubs bowl with each flush
- 419mm (16-1/2") rim height for accessible applications
- Fully glazed 2-1/8" (54mm) trapway
- Oversized 3" (76mm) Flush Valve
- Generous 229 x 208mm (9 x 8") water surface area
- Includes Duroplast slow close seat and cover with concealed seat ring and easy lift-off feature for simple removal and reattachment for cleaning
- Chrome-plated top mounted push button actuator
- 2 colour-matched bolt hole covers
- 100% factory flush tested
- **Design coordinates with Studio and Boulevard sinks**
- 5 year warranty on entire toilet

#### Separate Component Parts:

- ☐ **3053 120** Right Height™ Round Front Bowl
- ☐ **4000 204** Unlined Tank

#### Nominal Dimensions:

718 x 400 x 784mm  
(28-1/4" x 15-3/4" x 30-7/8")

Fixture only, supply by others

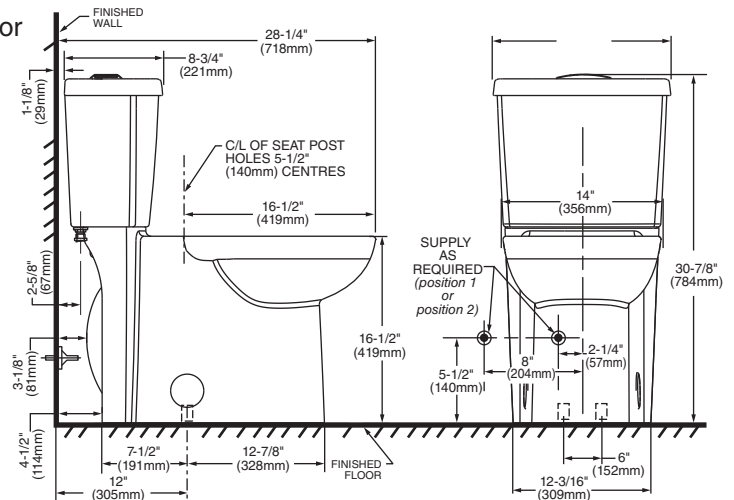
#### Compliance Certifications -

#### Meets or Exceeds the Following Specifications:

- ASME A112.19.2-2008/CSA B45.1-08
- Certified in EPA WaterSense HET program

#### To Be Specified

- ☐ Colour: ☐ White
- ☐ Supply with stop:



**IMPORTANT:** Water supply on the wall is required at 2-1/4" or 8" (57 or 203mm) from centreline of the toilet (see rough-in). First suggested position is hidden behind the toilet. The geometry of the toilet gives space for this installation. The second suggested position is next to the toilet. Between these two positions, the space for the supply between wall and toilet is limited to 4-1/2" (114mm). In this case, check your supply and hose dimensions.

#### NOTES:

THIS TOILET IS DESIGNED TO ROUGH-IN AT A MINIMUM DIMENSION OF 305MM (12") FROM FINISHED WALL TO C/L OF OUTLET.

SUPPLY NOT INCLUDED WITH FIXTURE AND MUST BE ORDERED SEPARATELY.

\* DIMENSION SHOWN FOR LOCATION OF SUPPLY IS SUGGESTED.

**IMPORTANT:** Dimensions of fixtures are nominal and may vary within the range of tolerance established by ANSI Standard A112.19.2

These measurements are subject to change or cancellation. No responsibility is assumed for use of superseded or voided pages.



- When installed so top of seat is 432 to 483mm (17" to 19") from the finished floor.

**MEETS THE AMERICAN DISABILITIES ACT GUIDELINES AND  
ANSI A117.1 REQUIREMENTS FOR ACCESSIBLE AND USEABLE  
BUILDING FACILITIES-CHECK LOCAL CODES.**

