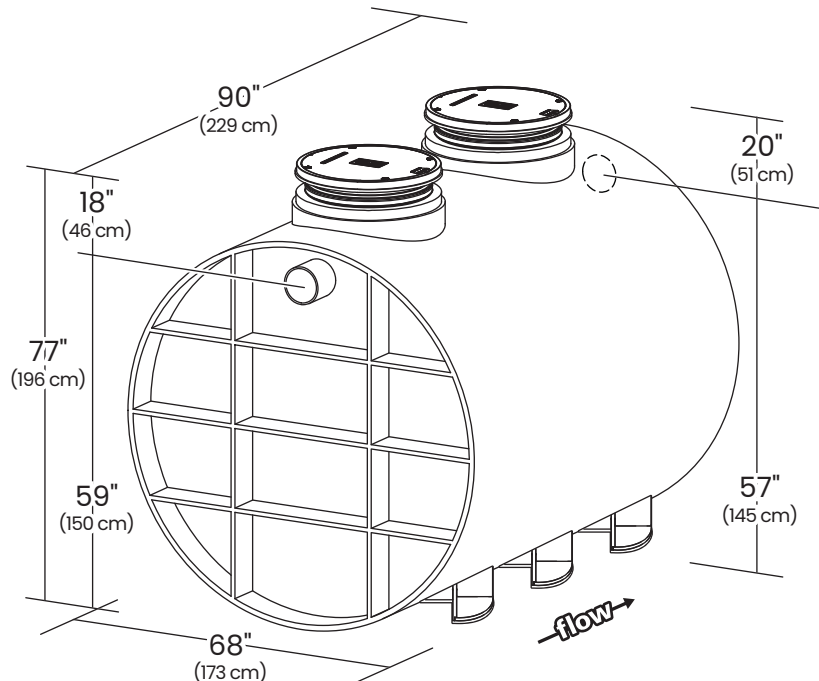


SPECIFICATION AND SUBMITTAL

GB-1000-200HF 200 GPM Grease Interceptor for Indoor/Outdoor Use



Intended Markets: Vancouver, BC

This unit is factory rated only. Please ensure unit meets local ordinance before specifying.

SUBMITTAL

Standard

Location: indoor/outdoor

Installation: below grade only

Flow Rate / Grease Capacity:

200 GPM (12.6 L/s) / 4,451 lbs. (2,018.9 kg)

Solids Capacity: 103 gal. (389.9 L)

Liquid Capacity: 1,010 gal. (3,823.3 L)

Weight: 1,516 lbs. (687.6 kg)

Connections: 6" (150 mm) plain end inlet/outlet

Cover: gas/water tight pickable cast iron with H20 lb. load rating

Options

- ☐ 6" (150 mm) MPT inlet/outlet (stainless steel, straight-through)
- ☐ 4" (100 mm) plain end inlet/outlet
- ☐ **C24H2:** Highway rated bolted composite covers - 16,000 lbs.
- ☐ **CC2:** integral membrane clamping collar kit
- ☐ **AK3:** High Water Anchor Kit

Field Cut Risers

- ☐ **FCR2** (x2) >4" - 34"
- ☐ **FCR2** (x4) >34" - 64"
- ☐ **FCR2** (x6) >64" - 94"

Approval

Signature:	Date:	Company:
Specifying Engineer:	Engineering Firm:	



SCHIER
LIFETIME GUARANTEED
GREASE INTERCEPTORS

MODEL NUMBER:
GB-1000-200HF

DESCRIPTION: 200 GPM Polyethylene Grease Interceptor - 1,010 gallon capacity

PART #: 4080-012-01

DWG BY: B. Karrer

DATE: 1/10/2020

REV:

ECO:



SPECIAL PRECAUTIONS

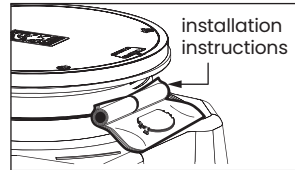
For Schier Grease Interceptor Installations – Failure to follow this guidance voids your warranty

⚠ WARNING! DO NOT AIR TEST UNIT OR RISER SYSTEM!
Doing so may result in property damage, personal injury or death.

⚠ CAUTION! Do not install this unit in any manner except as described in these instructions.

Installation Instructions

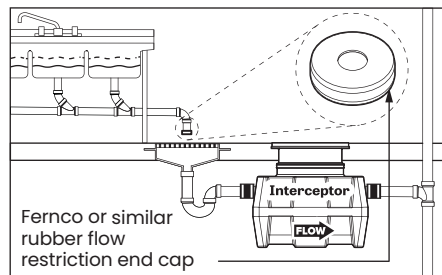
Installation instructions and additional components are included with the interceptor. Read all instructions prior to installation. This interceptor is intended to be installed by a licensed plumber in conformance with all local codes.



When Installing Interceptor Inside

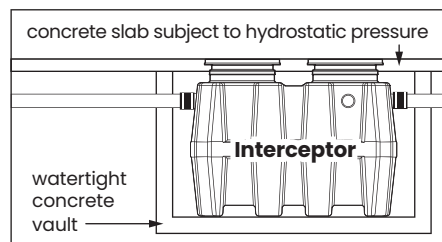
If your dishwashing sink(s) discharges into a floor drain/sink (drain), you must regulate the flow into the drain to avoid an overflow of water onto the kitchen floor. This can be done by installing a valve or flow restriction cap on the sink piping that discharges into the drain.

See drawing for guidance. For detailed guidance on indirect connections, go to: webtools.schierproducts.com/Technical_Data/Indirect_Connections.pdf

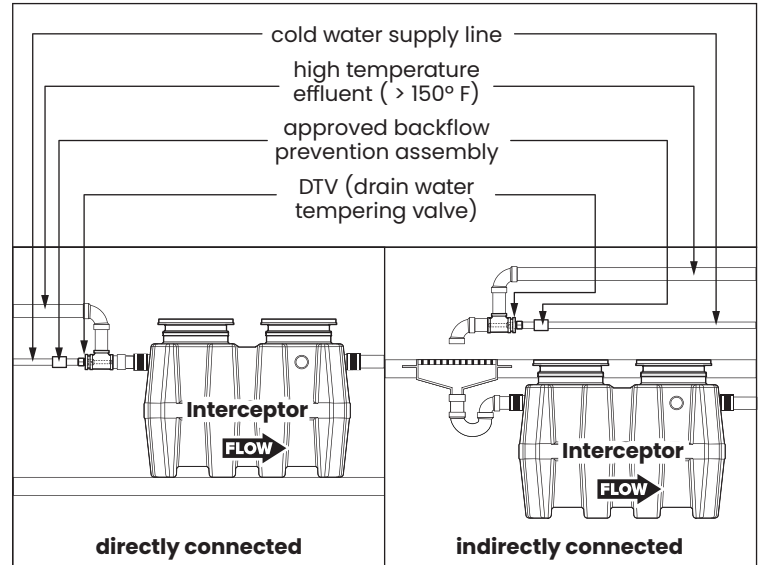


Hydrostatic Slabs (or Pressure Slabs)

When installed under a hydrostatic slab (slab designed to withstand upward lift, usually caused by hydrostatic pressure) interceptor must be enclosed in a watertight concrete vault.



High Temperature Kitchen Water



If water is entering the interceptor at excessive temperature (over 150° F), a drain water tempering valve (DTV) and approved backflow prevention assembly must be installed. Most state and local plumbing codes prohibit water above 150° F being discharged into the sanitary sewer. Water above 150° F will weaken or deform PVC Schedule 40 pipe, poly drainage fixtures like interceptors and erode the coating of cast iron (leading to eventual failure).



SCHIER
LIFETIME GUARANTEED
GREASE INTERCEPTORS

MODEL NUMBER:
GB-1000-200HF

DESCRIPTION: 200 GPM Polyethylene Grease Interceptor – 1,010 gallon capacity

PART #: 4080-012-01

DWG BY: B. Karrer

DATE: 1/10/2020

REV:

ECO:

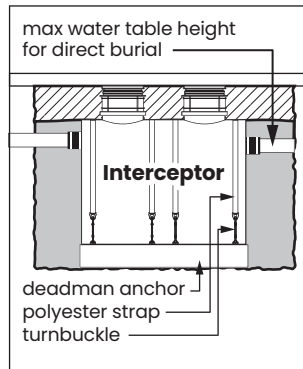


SPECIAL PRECAUTIONS

For Schier Grease Interceptor Installations – Failure to follow this guidance voids your warranty

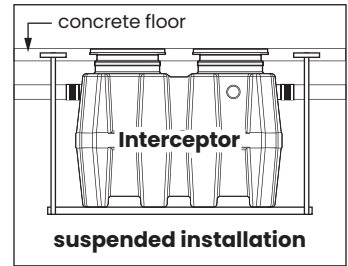
High Water Table Installations

Interceptors and risers are not designed to withstand water table height in excess of the top of the unit when buried (see figure). If it is possible for this to occur, install the interceptor and risers in a water-tight concrete vault or backfill with concrete or flowable fill (wet concrete and flowable backfill should be poured in stages to avoid crushing the interceptor). At risk areas include but are not limited to tidal surge areas, floodplains and areas that receive storm water. Great Basin™ models that are direct buried in high water table scenarios must be installed with an anchor kit. Models GB-50, GB-75, and GB-250 use model AK1 anchor kit. Model GB-500 uses model AK2 anchor kit for use with deadmen anchors. Models GB-1000, GGI-750 and GGI-1500 use model AK3 anchor kit for use with deadmen anchors.



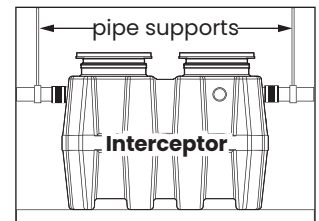
Fully Support Base of Unit

Install unit on solid, level surface in contact with the entire footprint of unit base; for suspended installations design trapeze to support the wet weight of the unit. Do not partially support unit or suspend unit using metal U-channel to create a trapeze.



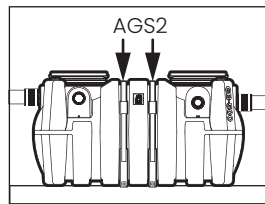
Support Inlet and Outlet Piping

For above grade installations ensure heavy inlet and outlet piping (such as cast iron or long runs) is properly supported or suspended during the entire installation process to prevent connection failure or damage to bulkhead fittings.

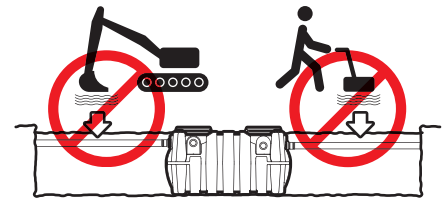


Above Grade Installation Support (for Model GB-500 Only)

The wet weight of the interceptor combined with high temperature kitchen water creates the potential for tank deformation when installed above grade. Model GB-500 installed above grade must be installed with Above Grade Support Kit model AGS2 to maintain structural integrity



**DO NOT
COMPACT
BACKFILL**



SCHIER
LIFETIME GUARANTEED
GREASE INTERCEPTORS

MODEL NUMBER:
GB-1000-200HF

DESCRIPTION: 200 GPM Polyethylene Grease Interceptor – 1,010 gallon capacity

PART #: 4080-012-01

DWG BY: B. Karrer

DATE: 1/10/2020

REV:

ECO:

SPECIFICATIONS

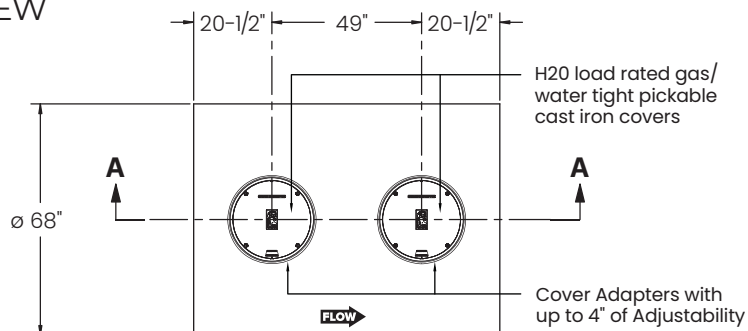
NOTES

1. 6" plain end SCH. 40 inlet/outlet
2. Unit weight - w/composite covers: 1,400 lbs.;
w/cast iron covers: 1,516 lbs.
3. Maximum operating temperature:
150° F continuous
4. Capacities - Liquid: 1,010 gal.; Grease: 4,451 lbs.
(608.1 gal.); Solids: 103 gal.

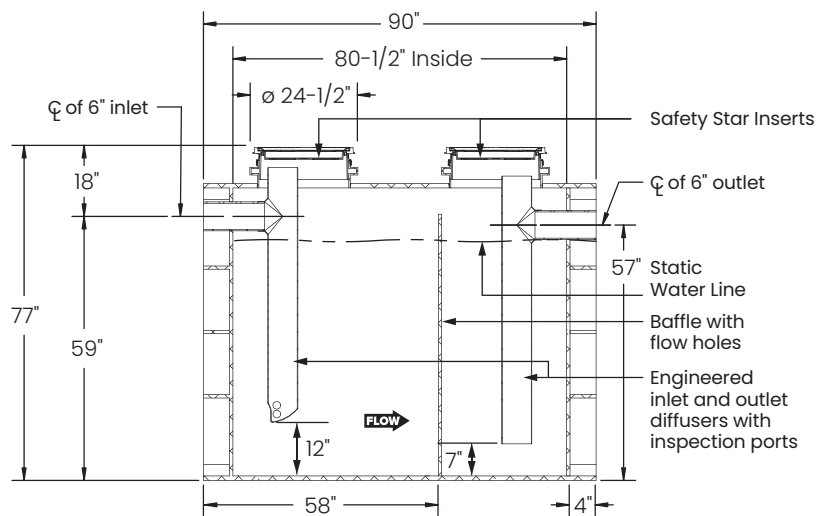
ENGINEER SPECIFICATION GUIDE

Schier Great Basin™ grease interceptor model # GB-1000-200HF shall be lifetime guaranteed and made in USA of seamless, molded polyethylene with minimum 3/4" uniform wall thickness. Interceptor shall be furnished for below grade installation with field adjustable riser system. Interceptor flow rate shall be 200 GPM. Interceptor grease capacity shall be 4,451 lbs. Cover shall provide water/gas-tight seal and have minimum 16,000 lbs. load capacity.

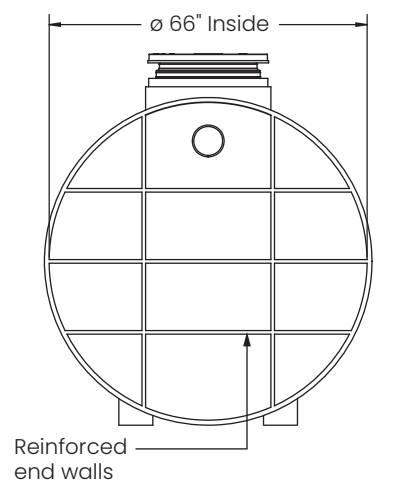
TOP VIEW



SECTION A-A



OUTLET END VIEW



SCHIER
LIFETIME GUARANTEED
GREASE INTERCEPTORS

MODEL NUMBER:
GB-1000-200HF

DESCRIPTION: 200 GPM Polyethylene Grease Interceptor -
1,010 gallon capacity

PART #: 4080-012-01

DWG BY: B. Karrer

DATE: 1/10/2020

REV:

ECO: