



T075.508 Bath/Shower Trim Shown

GENERAL DESCRIPTION:

SHOWERHEAD

Water saving showerhead with maximum 1.75 gpm/6.6 L/min. flow rate.

WALL TUB SPOUT

Metal slip-on diverter spout.

WALL VALVE TRIM

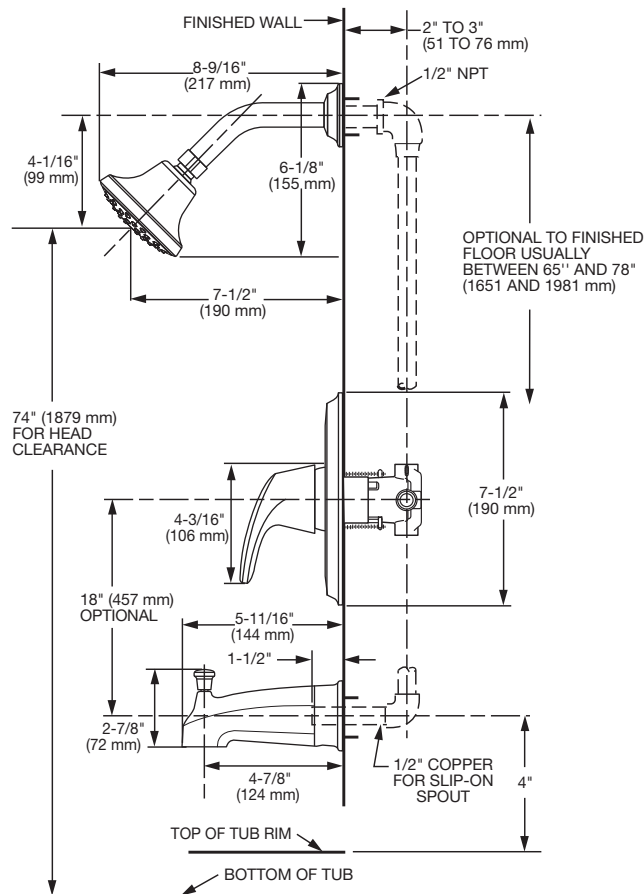
Metal lever handle.
Plastic wall escutcheon.

MODEL NUMBER:

TRIM KITS:

- ❑ **T075.508 Colony PRO BATH/SHOWER Trim Kit**
Metal lever handle. Water saving showerhead.
LESS valve body.
- ❑ **T075.508XH Colony PRO BATH/SHOWER Trim Kit**
Same as above - LESS showerhead
- ❑ **T075.507 Colony PRO SHOWER ONLY Trim Kit**
Metal lever handle. Water saving showerhead.
LESS valve body.
- ❑ **T075.507XH Colony PRO SHOWER ONLY Trim Kit**
Same as above - LESS showerhead
- ❑ **T075.500 Colony PRO VALVE ONLY**
Metal lever handle.

For use with R111 Series Pressure Balance Valves.
See reverse side for available Rough Valves.



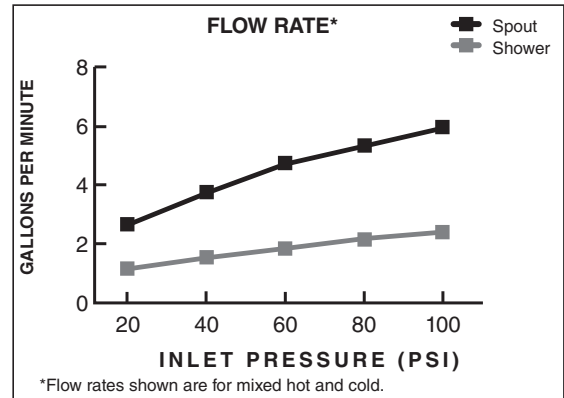
SUGGESTED SPECIFICATION

Bath/shower fitting shall feature a water saving showerhead with Max. 1.75 gpm/6.6 L/min. flow rate. Fitting shall be: American Standard Trim Kit Model # T075.50_ and Valve Body Model # R11_.

CODES AND STANDARDS

These products meet or exceed the following codes and standards:

ANSI A117.1
ASSE 1016
ASME A112.18.1
CSA B125.1



TRIM KITS *	Product Number	Description		Finish Options		
				Polished Chrome	Legacy Bronze	PVD Satin Nickel
				002	278	295
	T075.508	Bath/Shower Trim Kit. Metal lever handle. Water saving showerhead. LESS valve body.				
	T075.508XH	Bath/Shower Trim Kit. Same as above - LESS showerhead.				
	T075.507	Shower ONLY Trim Kit. Metal lever handle. Water saving showerhead. LESS valve body.				
	T075.507XH	Shower ONLY Trim Kit. Same as above - LESS showerhead.				
	T075.500	Valve Trim Only. Metal lever handle.				

*** TRIM & ROUGH MUST BE ORDERED SEPARATELY.**

ROUGH VALVE BODIES	Product Number	Description
	R111	Rough Valve Body less trim. Universal inlets/outlets.
	R111SS	Rough Valve Body less trim. Universal inlets/outlets with Screwdriver Stops.
	R115	Rough Valve Body less trim. Female Thread inlets/outlets.
	R115SS	Rough Valve Body less trim. Female Thread inlets/outlets with Screwdriver Stops.
	R117	Rough Valve Body less trim. PEX inlets/universal outlets for Crimp Ring PEX system (ASTM F1807).
	R117SS	Rough Valve Body less trim. PEX inlets/universal outlets for Crimp Ring PEX system (ASTM F1807) with Screwdriver Stops.
	R118	Rough Valve Body less trim. PEX inlets/universal outlets for Cold Expansion PEX system (ASTM F1960).
	R118SS	Rough Valve Body less trim. PEX inlets/universal outlets for Cold Expansion PEX system (ASTM F1960) with Screwdriver Stops.
	R119	Rough Valve Body less trim. CPVC inlets/universal outlets.
	R119SS	Rough Valve Body less trim. CPVC inlets/universal outlets with Screwdriver Stops.



Meets the American Disabilities Act Guidelines and **ANSI A117.1** Requirements for the physically challenged.

PART OF **LIXIL**