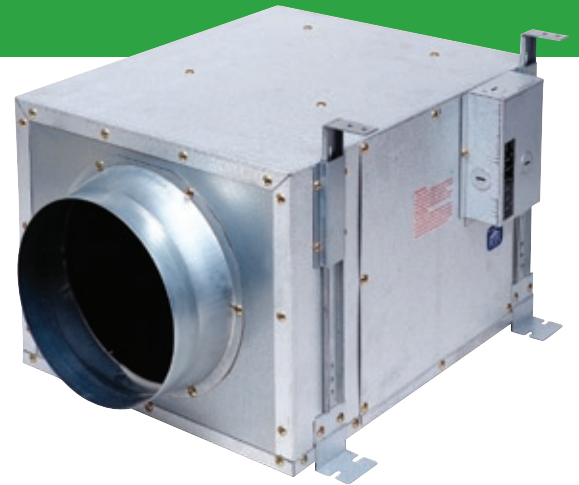


Remote Mounted In-Line Ventilation Fan *Revolutionary ventilation fans from Panasonic.*



In-Line Ventilation Fan for Single or Multiple Inlets

- Galvanized steel housing for long life
- Insulated housing to prevent condensation and noise
- Tapered duct adapter for easy connection
- Super quiet/energy efficient motor
- Totally enclosed condenser motor for long life – rated for continuous run
- Motor equipped with thermal cut-off fuse
- Easy installation
- Joist or truss attachment brackets included
- Suspension brackets included
- Low profile family grille design



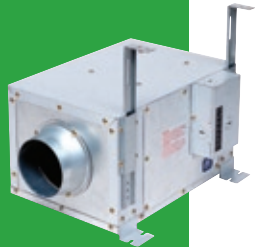
WhisperLine™

VENTILATION FAN

Since 1909, Panasonic has continuously developed new advanced air movement technologies to meet the needs of residential and industrial building designs. Looking forward, we will continue to invest in new technologies that help protect the global environment through the conservation of energy and precious resources, and follow the spirit of our corporate policy, "CUSTOMER FIRST".

FV-10NLF1

120 CFM –
4" (102mm) Duct



FV-20NLF1

240 CFM –
6" (152mm) Duct



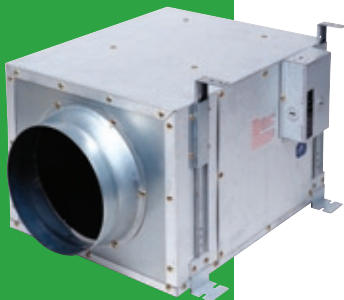
FV-30NLF1

340 CFM –
6" (152mm) Duct



FV-40NLF1

440 CFM –
8" (203mm) Duct



Housing

- Galvanized steel for long life
- Insulated housing to prevent condensation and noise
- Tapered duct adapter for easy connection

Motor

- Super quiet/energy efficient
- Totally enclosed condenser motor for long life
– rated for continuous run

Safety

- Motor equipped with thermal cut-off fuse

Easy Installation

- 5 positions for installation
- Joist or truss attachment brackets included
- Suspension brackets included

Grille (optional accessory)

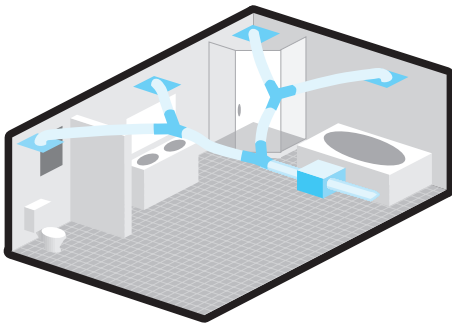
- Low profile family design
- Adjustable airflow for multi-inlet balance

Some Multiple Inlet Options:

- Multiple task ventilation inlets in a single bathroom
i.e. shower, whirlpool, toilet, vanity
- Ventilate two bathrooms with one in-line fan
- Continuous (low rate) ventilation with multiple inlets throughout the home for indoor air quality improvement
- Suitable for airstream temperatures up to 140°F



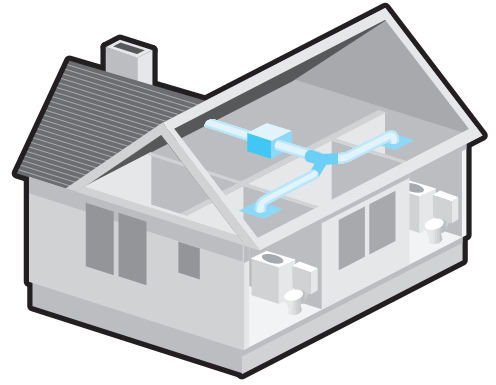
Ventilation Inlets



Multiple task ventilation inlets in a single bathroom, i.e. shower, whirlpool, toilet and vanity



Continuous (low rate) ventilation with multiple inlets through the home for indoor air quality improvement



Ventilate two bathrooms with one in-line fan

WhisperLine™ Installation Kits

Model No.	Type Grille	Inlet Grille	Backdraft Damper	Clamp	Y-Adapter
FV-NLF04G	4" (102mm) Single Inlet	1 - 4" (102mm)	-	-	-
FV-NLF06G	6" (152mm) Single Inlet	1 - 6" (152mm)	-	-	-
PC-NLF04S	4" (102mm) Single Inlet	1 - 4" (102mm)	1 - 4" (102mm)	6	-
PC-NLF06S	6" (152mm) Single Inlet	1 - 6" (152mm)	2 - 6" (152mm)	6	-
PC-NLF04D	4" (102mm) Double Inlet	2 - 4" (102mm)	2 - 4" (102mm)	12	1 (4" - 4" x 2) / 1 (102mm - 102mm x 2)
PC-NLF06D	6" (152mm) Double Inlet	2 - 6" (152mm)	2 - 6" (152mm)	12	1 (6" - 6" x 2) / 1 (152mm - 152mm x 2)
PC-NLF64D	6" (152mm) - 4" (102mm) Double Inlet	2 - 4" (102mm)	2 - 4" (102mm)	12	1 (6" - 4" x 2) / 1 (152mm - 102mm x 2)
PC-NLF86Y	8" (203mm) - 6" (152mm) Y-Adapter	-	-	-	1 (8" - 6" x 2) / 1 (203mm - 152mm x 2)

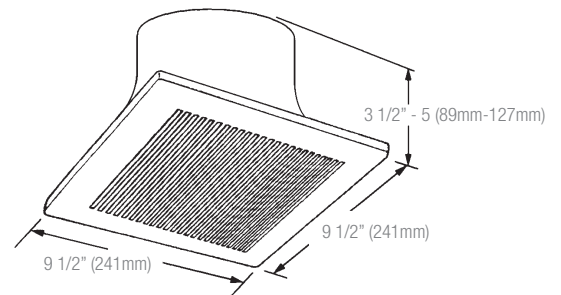


Single Inlet Kit



Double Inlet Kit

Inlet grille and 4" (102mm) duct adaptor height 3 1/2" (89mm)
Inlet grille and 6" (152mm) duct adaptor height 5" (127mm)



Remote Mounted In-Line Ventilation Fan

Revolutionary ventilation fans from Panasonic.

WhisperLine™		FV-10NLF1			FV-20NLF1			FV-30NLF1			FV-40NLF1		
Ventilation Fan Characteristics	Static Pressure in inches w.g.	0.2	0.3	0.4	0.2	0.3	0.4	0.2	0.3	0.4	0.2	0.3	0.4
	Static Pressure in Pascal (Pa)	49.8	74.7	99.6	49.8	74.7	99.6	49.8	74.7	99.6	49.8	74.7	99.6
	Air Volume (CFM)	120	105	82	240	225	200	340	322	302	440	425	408
	Air Volume (l/s)	57	50	39	113	106	94	160	152	143	208	201	193
	Noise (sones)	1.0			1.4			1.7			2.1		
	Power Consumption (Watts)	36			57			98			132		
	Energy Efficiency (CFMs/Watt)	3.3			4.2			3.5			3.3		
	Energy Efficiency (l/S/Watt)	1.6			2.0			1.6			1.6		
	Speed (RPM)	1590			1260			1337			1150		
	Current (amps)	0.31			0.46			0.86			1.10		
	Power Rating (V/Hz)	120/60			120/60			120/60			120/60		
Specifications	Motor Type	Condenser			Condenser			Condenser			Condenser		
	Type of Motor Bearing	Ball			Ball			Ball			Ball		
	Thermal Fuse Protection	Yes			Yes			Yes			Yes		
	Blower Wheel Type	Sirocco			Sirocco			Sirocco			Sirocco		
	ENERGY STAR® Qualified	Yes			Yes			Yes			Yes		
Installation	Duct Diameter (mm/in)	102 / 4			152 / 6			152 / 6			203 / 8		
	Opening Dimension - Square (mm/in)	NA			NA			NA			NA		
	Grille Size - Square (mm/in)	241 / 9-1/2			241 / 9-1/2			241 / 9-1/2			241 / 9-1/2		
Shipping	Gross Weight (kg/lbs)	6.4 / 14			7.7 / 17			10.9 / 24			11.8 / 26		
Approved Code/Standard Regulation	cUL Tub/Shower Enclosure	Yes			Yes			Yes			Yes		
	HVI	Yes			Yes			Yes			Yes		
	Mfg in ISO 9001 Certified Facility	Yes			Yes			Yes			Yes		

w.g.=water gauge
S.P.=static pressure

Panasonic Canada Inc.
5770 Ambler Drive
Mississauga, ON
L4W 2T3
email: ventilationfans@ca.panasonic.com
www.panasonic.ca



Panasonic ventilation fans may qualify for an energy saving rebate. Rebate programs are often provided by local utility companies and are based on ENERGY STAR® guidelines. Check with your local utility company for details.

VF-LN-0906E