



# Whist®

## Glass undermount bathroom sink in Opaque Dusk K-2741-G1

### Features

- Bowl-shaped basin in Dusk with concentric ring styling.
- No faucet holes; requires wall- or counter-mount faucet.
- Glass material provides a strong durable surface that is easy to clean yet visually distinctive.
- Fits in or within a standard size countertop and works with a variety of faucet styles.
- The Whist sink is available in clear glass (Ice), Translucent colors, and Opaque colors.

### Material

- Glass.

### Installation

- Undermount.

### Recommended Products/Accessories

K-7107 Decorative Drain  
K-7108 Decorative Drain  
K-7129 Drain  
K-9018 P-Trap  
K-23726 Drain treatment  
K-23723 Faucet cleaner

### Included Components

Additional Components:  
Hardware kit  
drain gasket kit



ADA	CSA B651	OBC
-----	----------	-----

### Codes/Standards

CSA B45.11/IAPMO Z401  
ADA  
ICC/ANSI A117.1  
CSA B651  
OBC


### KOHLER® One-Year Limited Warranty

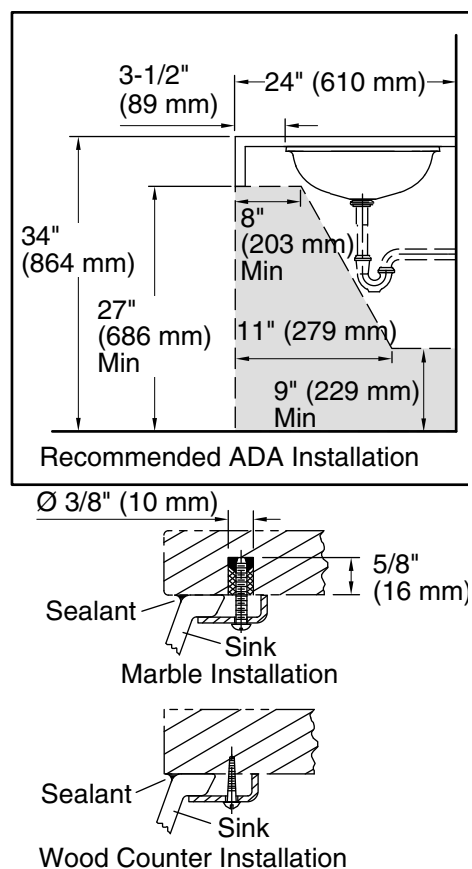
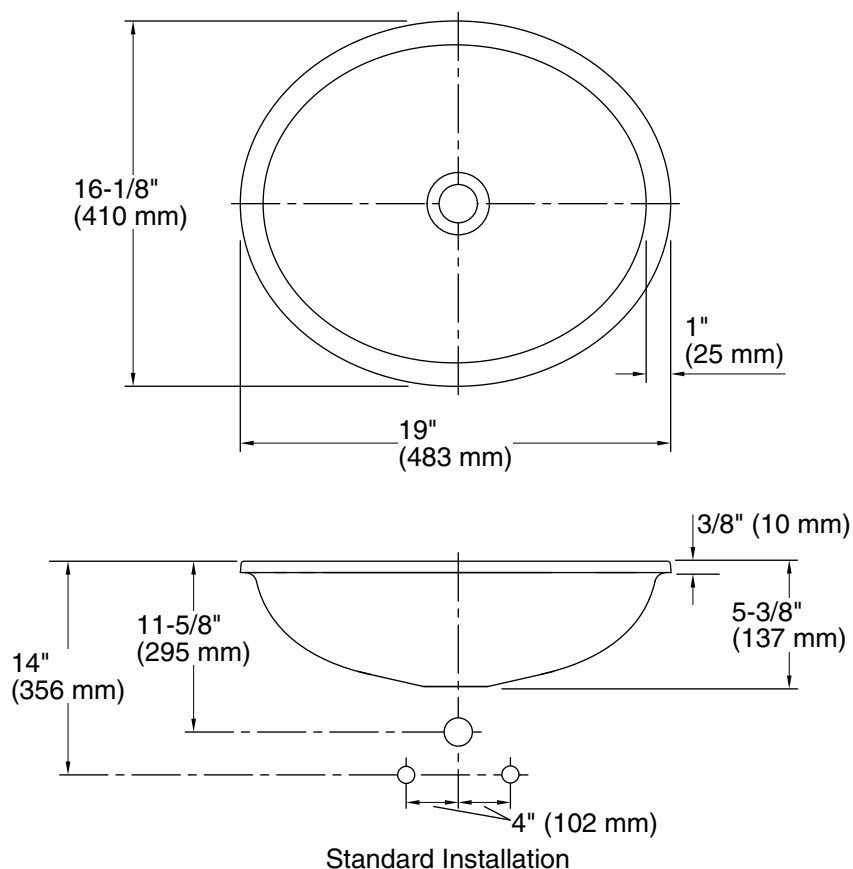
See website for detailed warranty information.

### Available Colors/Finishes

*Color tiles intended for reference only.*

Color	Code	Description
-------	------	-------------

	B11	Ice
---	-----	-----



## Technical Information

All product dimensions are nominal.

Bowl configuration:	Single
Installation:	Under-mount
Bowl area (Only):	Length: 17-3/16" (437 mm) Width: 14-3/16" (360 mm) Bowl depth: 4-3/4" (121 mm) Water depth: 4-3/4" (121 mm)
Drain hole:	1-3/4" (44 mm)
Template:	1151011-7, required, included

## Notes

Install this product according to the installation instructions.

Product does not have an overflow.

NOTICE: Countertop manufacturer or cutter must use the cut-out template provided with the product, or a current one provided by Kohler Co. (call 1-800-4-KOHLER). Kohler Co. is not responsible for cutout errors when the incorrect cut-out template is used.

ADA, OBC, CSA B651 compliant when installed to the specific requirements of these regulations.