

*American
Standard*

americanstandard.ca

LOFT®



Loft® Right Height® Elongated One-Piece 2535 I28

Introducing the sleek and modern styling of the Loft® Right Height® Elongated one-piece toilet featuring the patented Cadet® 3 Flushing System. Superior performance is driven by an oversized 3" flush valve and an elongated siphon action jetted bowl with a 2-1/8" trapway. The Loft meets Barrier Free applications which makes sitting down and standing up easier and comes complete with a 5 year Worry Free™ Warranty.

- One-piece design with side chrome trip lever
- Vitreous china
- High efficiency toilet (1.07 gpf/4.8 Lpf gpf†)
- Meets EPA WaterSense® criteria
- 1,000g MaP Score*
- Space saving compact design - Elongated Right Height bowl fits in the space of a round front toilet
- Elongated siphon action jetted bowl with 2-1/8" trapway
- Rim height at 16-1/2" (419mm) for accessible application
- Includes slow close telescoping seat (5359A 051B)



When used with
1.07 gpf/4.8 Lpf
tanks



Right Height Elongated One-Piece Toilet 2535 I28

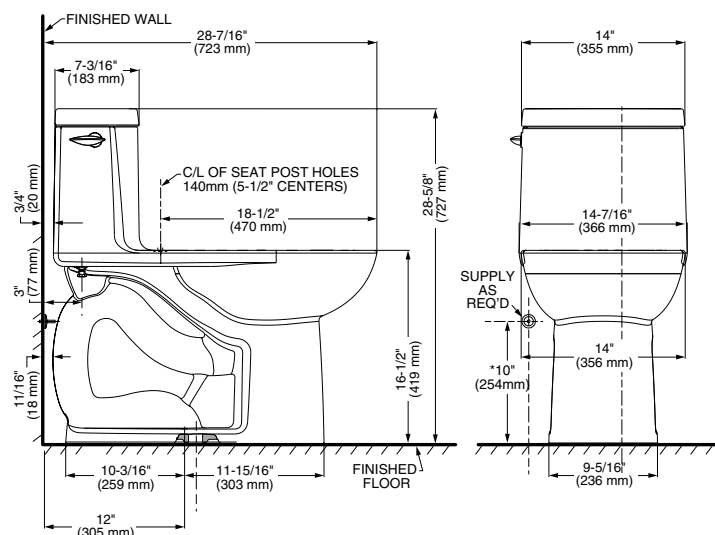
	LOFT
FLUSH VALVE	3" Diameter
SIPHON OUTLET	2-1/8"
WATER SPOT	9" x 8"
SURFACE	Standard with EverClean®
MAP* SCORE	BEST 1,000 g
WARRANTY	5 Years (Covers chinaware and trim)



CHINWARE COLOURS



020 WHITE



* Maximum Performance (MaP) testing performed by IAPMO R&T Lab.
MaP Report conducted by Veritec Consulting, Inc. and Koeller and Company.

† High Efficiency, ultra-low consumption 1.07 gpf / 4.8 Lpf models utilize 20% less water and meet EPA WaterSense® criteria.