

SPECIFICATIONS

Notes:

- 1. 6" plain end inlet/outlet
- 2. Unit weight - w/ composite covers: 708 lbs. (for wet weight add 8,413 lbs.)
- 3. Maximum operating temperature: 150° F continuous
- 4. Capacities - Liquid: 1,000 gal.;  
Grease: 5,495 lbs. (753 gal.) @100GPM  
Grease: 4,959 lbs (679 gal.) @200GPM  
Solids: 211 gal.
- 5. Satisfies Miami DERM 99% efficiency requirements; retaining the following capacities at 99.0% efficiency:  
5,272 lbs. (722 gal.) @100GPM  
3,127 lbs. (428 gal.) @200GPM
- 6. For gravity drainage applications only.
- 7. Do not use for pressure applications.
- 8. Cover placement allows full access to tank for proper maintenance.
- 9. Vent not required unless per local code.
- 10. Engineered inlet and outlet diffusers with inspection ports are removable to inspect / clean piping. For series installations, the top of the inlet diffuser on the first unit in the series must be sealed.
- 11. Integral air relief / Anti-siphon / Sampling access.
- 12. Adjustable cover adapters provide up to 4" of additional height.
- 13. Flow rates are based on 2-minute drain time.
- 14. Designed for both below and above-grade installations.
- 15. Safety Star®, access restrictor built into each cover adapter, prevents accidental entry to tanks (450 lb rating).

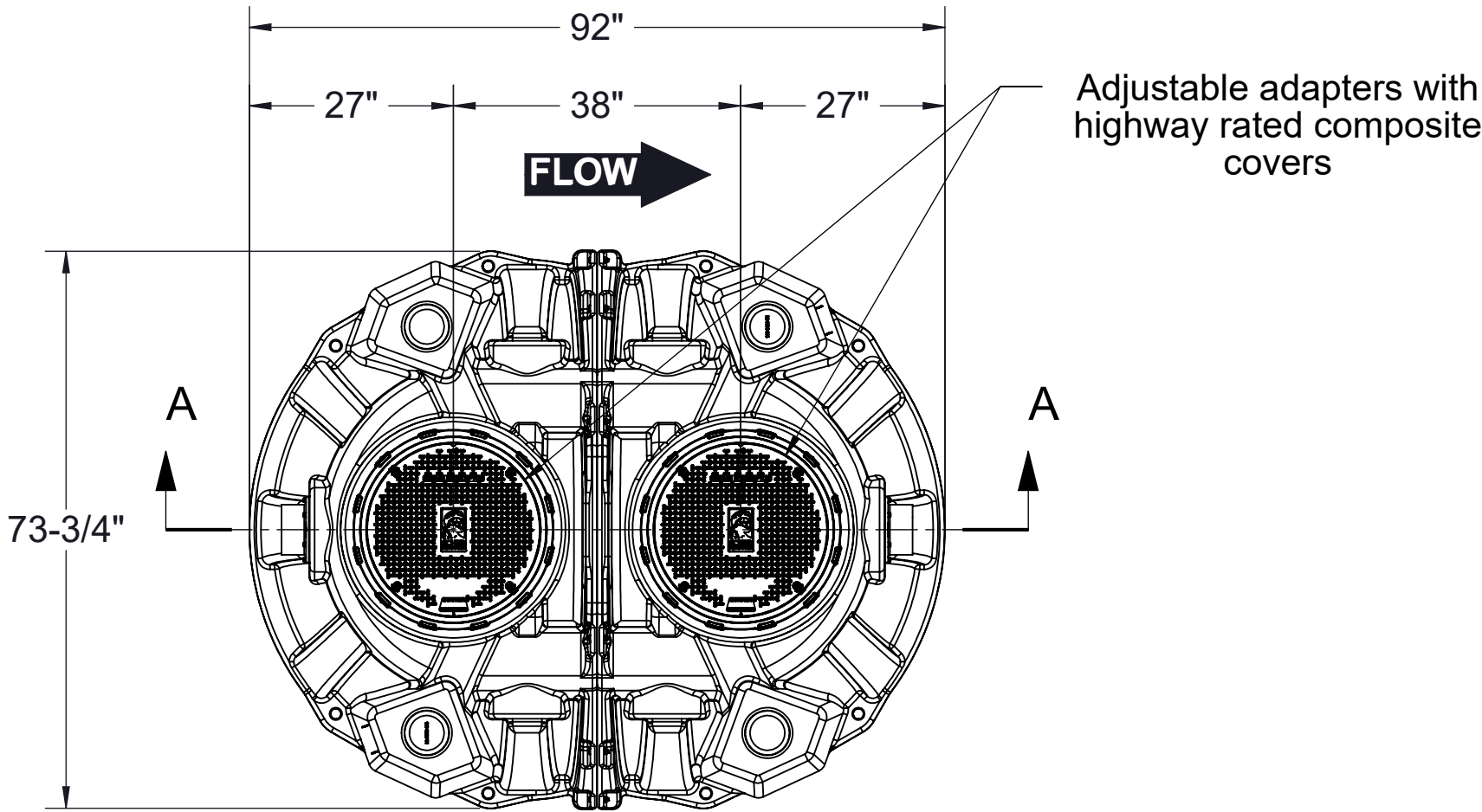
ENGINEER SPECIFICATION GUIDE

Schier Great Basin™ grease interceptor model # GB-1000 shall be lifetime guaranteed and made in USA of seamless, molded polyethylene with minimum 7/16" uniform wall thickness. Interceptor shall be furnished for above or below-grade installation with adjustable cover adapter and Safety Star® access restrictor built into each cover adapter. Interceptor shall be certified to ASME A112.14.3 (Type D) and CSA B481.1 as well as certified to IAPMO/ANSI Z1001-2021. Interceptor flow rate shall be 100 GPM or 200GPM. Interceptor grease capacity shall be 5,495 lbs. Cover shall provide water/gas-tight seal and have minimum 16,000 lbs. load capacity.

CERTIFIED PERFORMANCE

Great Basin™ hydromechanical grease interceptors are third party performance-tested and listed by IAPMO to ASME #A112.14.3 and CSA B481.1 grease interceptor standards and greatly exceed requirements for grease separation and storage. They are compliant to the Uniform Plumbing Code and the International Plumbing Code.

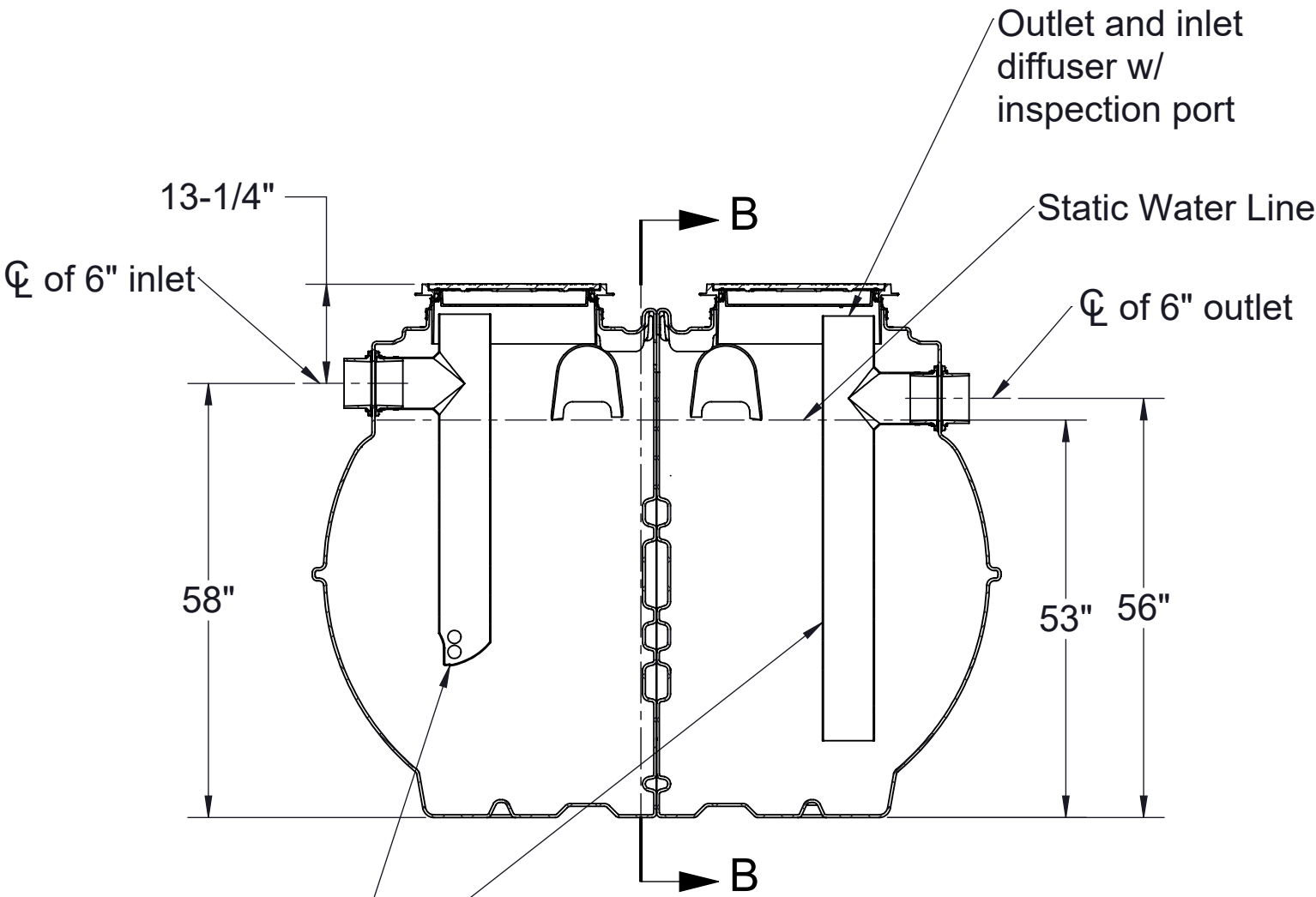
Type D certification does not require a flow control



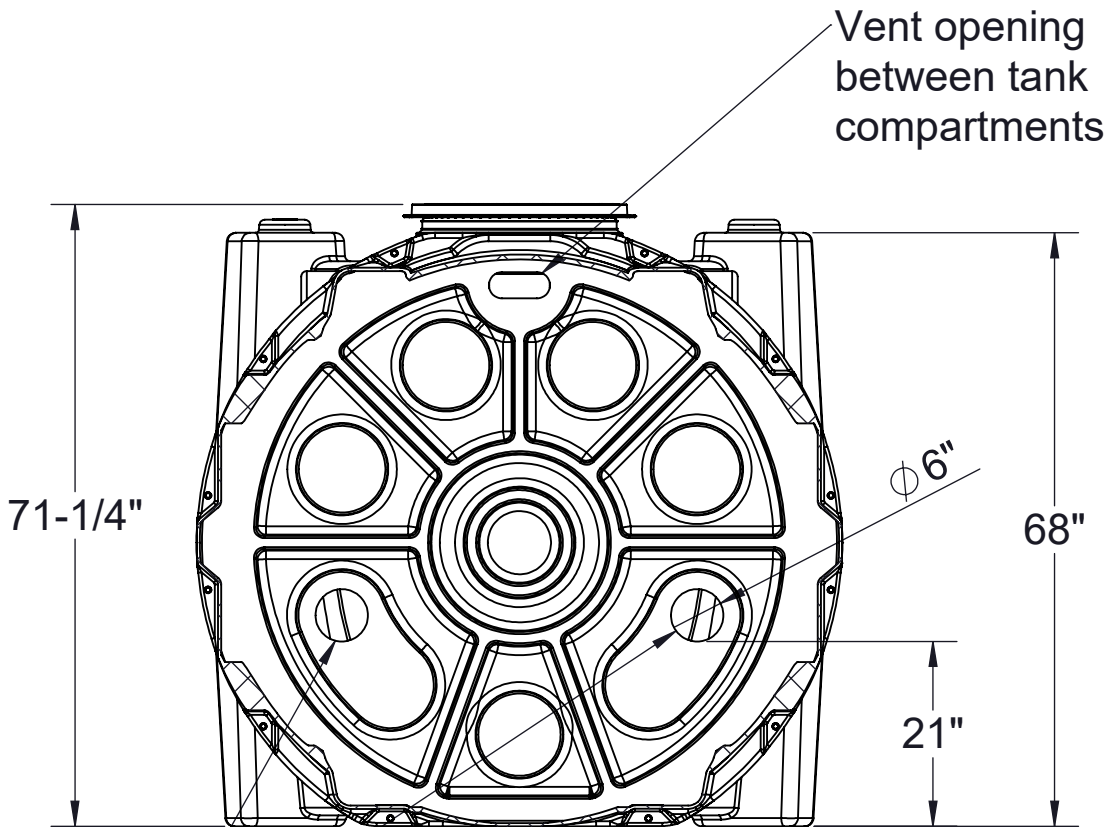
TOP VIEW



ISOMETRIC VIEW



SECTION A-A



SECTION B-B



Satisfies Miami DERM 99% efficiency requirements. Product labels are permanently attached to inside and outside of unit for easy viewing.

SPECIFICATION SHEET

MODEL NUMBER:

GB-1000

PROPRIETARY AND CONFIDENTIAL

THE INFORMATION CONTAINED IN THIS DRAWING IS THE SOLE PROPERTY OF SCHIER PRODUCTS. ANY REPRODUCTION IN PART OR AS A WHOLE WITHOUT THE WRITTEN PERMISSION OF SCHIER PRODUCTS IS PROHIBITED.

PART NUMBER:

4080-001-01

DESCRIPTION:

GB-1000 GREASE INTERCEPTOR 100 GPM/ 200 GPM  
6" INLET/OUTLET, HIGHWAY RATED COMPOSITE COVER

DWG BY:

B.BROWN

DATE:

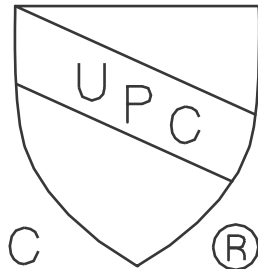
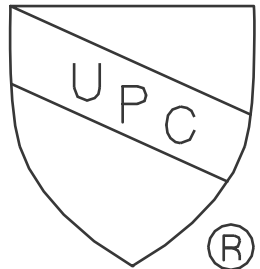
10/18/2021

REV:

02

ECO:

032822TA



SCHIER

6455 Woodland Dr  
Shawnee, KS 66218  
Tel: 913-951-3300  
Fax: 913-951-3399  
schierproducts.com