



YORKVILLE™ FloWise® ELONGATED PRESSURE-ASSISTED TOILET 1.1 gpf / 4.2 Lpf

VITREOUS CHINA

YORKVILLE™ FloWise® ELONGATED PRESSURE-ASSISTED TOILET

1.1 gpf / 4.2 Lpf

2876.100

- Vitreous china
- **Floor-mounted, back-outlet toilet**
- High Efficiency, Ultra Low-consumption (1.1 gpf/4.2 Lpf)
- EverClean® surface inhibits the growth of stain- and odor-causing bacteria, mold, and mildew on the surface
- Meets EPA WaterSense® criteria
- Elongated bowl
- Pressure-assisted siphon jet flush action
- Fully-glazed 2-1/8" trapway
- 10 x 12" water surface area
- Close-coupled Flushometer tank*
- Metal chrome trip lever
- Speed Connect® tank/bowl coupling system
- Sanitary dam on bowl
- 4 bolt caps
- 100% factory flush tested



3701.100 Elongated bowl with 4 bolt caps

3701.001 Same as above, Universal Bowl

4142.100 Flushometer tank complete with coupling components

Nominal Dimensions:

752 x 516 x 742mm (29-3/4" x 20-1/2" x 29-1/4")

Fixture only, seat and supply by others
Recommended working pressure range
25 psi - 80 psi

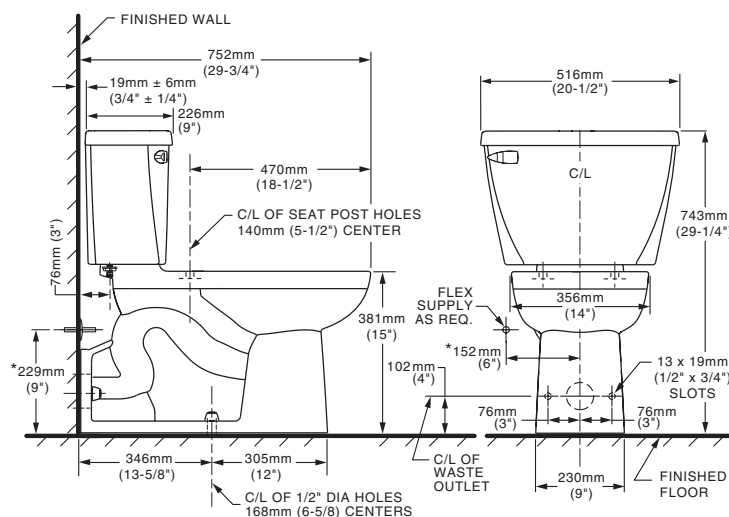
Alternate Configurations Available:

- ❑ 4142.601 Tank and tank cover only with tank cover locking device
- ❑ 4142.801 Tank and tank cover only with right hand trip lever
- ❑ 4142.901 Tank complete with right hand trip lever and tank cover locking device

Compliance Certifications -

Meets or Exceeds the Following Specifications:

- ASME A112.19.2-2008/CSA B45.1-08 for Vitreous China Fixtures
- US EPA WaterSense® Specification for HET's



NOTES:

WASTE OUTLET SEAL RING MUST BE NEOPRENE OR GRAPHITE-FELT (WAX RING NOT RECOMMENDED).

SUPPLY NOT INCLUDED WITH FIXTURE AND MUST BE ORDERED SEPARATELY.

DISTANCE FROM FLOOR TO CLOSET FLANGE CENTERLINE (ROUGH-IN) MUST BE 4" (102 MM) WITH FLANGE SURFACE FLUSH TO 1/16" (1.5MM) MAX. BEYOND FINISHED WALL.

* DIMENSION SHOWN FOR LOCATION OF SUPPLY IS SUGGESTED. FOR ADDITIONAL INFORMATION REFER TO INSTALLATION INSTRUCTIONS SUPPLIED.

IMPORTANT: Dimensions of fixtures are nominal and may vary within the range of tolerances established by ASME A112.19.2-2008 / CSH B45.1-08. These measurements are subject to change or cancellation. No responsibility is assumed for use of superseded or voided pages.

To Be Specified:

- ❑ Color: ❑ White ❑ Bone ❑ Linen
- ❑ Seat: American Standard #5901.100.020
- ❑ Supply with Stop:

