

KITCHEN FAUCETS

- Allora® Collection
- Single Handle Pull-Down

Submitted Model No.: _____

Specific Features: _____

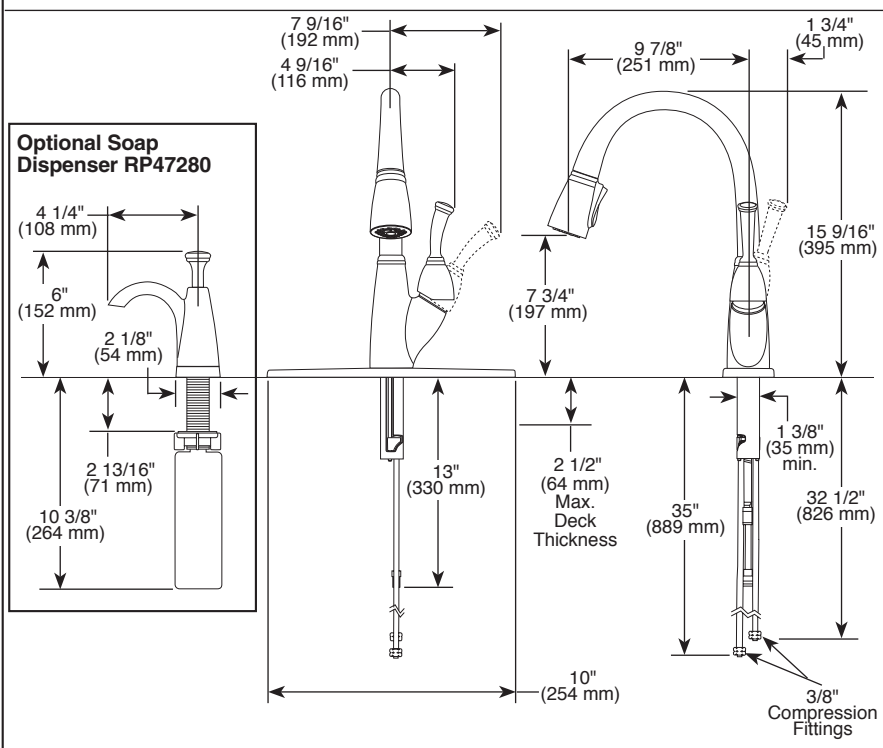
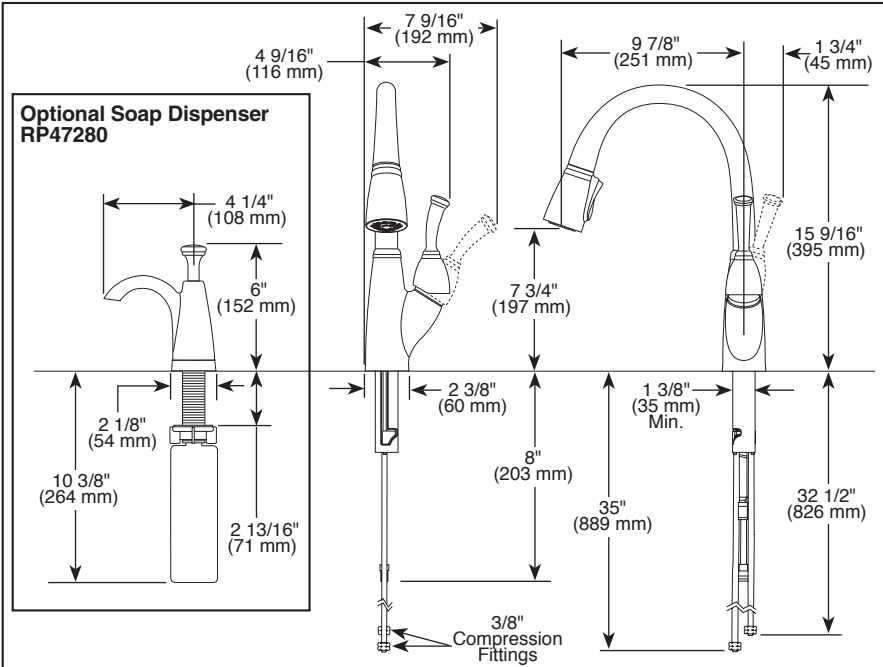
FEATURES:

- EZ Anchor® top down mounting
- DIAMOND Seal® Technology
- MagnaTite® Docking System
- Quick Snap® connect hoses
- Touch-Clean® sprayhead

STANDARD SPECIFICATIONS:

- Max. 1.80 gpm @ 60 psi, 6.8 L/min @ 414 kPa
- One, two, three or four hole mount (escutcheon optional, not included)
- Diamond coated ceramic cartridge
- 3/8" O.D. straight, staggered PEX supply tubes
- Rotating 360°
- Red/blue indicatore marking
- Two function wand; aerated stream or spray
- Dual integral check valves in sprayer
- RP61607 clip available with flow rate of 1.50 gpm max. @ 60 PSI

Note: See model 999* for matching bar/prep



WARRANTY

- Lifetime limited warranty on parts (other than electronic parts and batteries) and finishes: or, for commercial users, for 5 years from date of purchase.
- 5 year limited warranty on electronic parts (other than batteries); or, for commercial users, for 1 year from the date of purchase. No warranty is provided on batteries.

COMPLIES WITH:

- ASME A112.18.1 / CSA B125.1
- Indicates compliance to ICC/ANSI A117.1



55 E. 111th Street, Indianapolis, Indiana 46280
 350 South Edgeware Road, St. Thomas, ON N5P 4L1
 © 2015 Masco Corporation of Indiana

Delta reserves the right (1) to make changes in specifications and materials, and (2) to change or discontinue models, both without notice or obligation. Dimensions are for reference only. See current full-line price book or www.deltafaucet.com for finish options and product availability.