



Installation Manual

7264000F

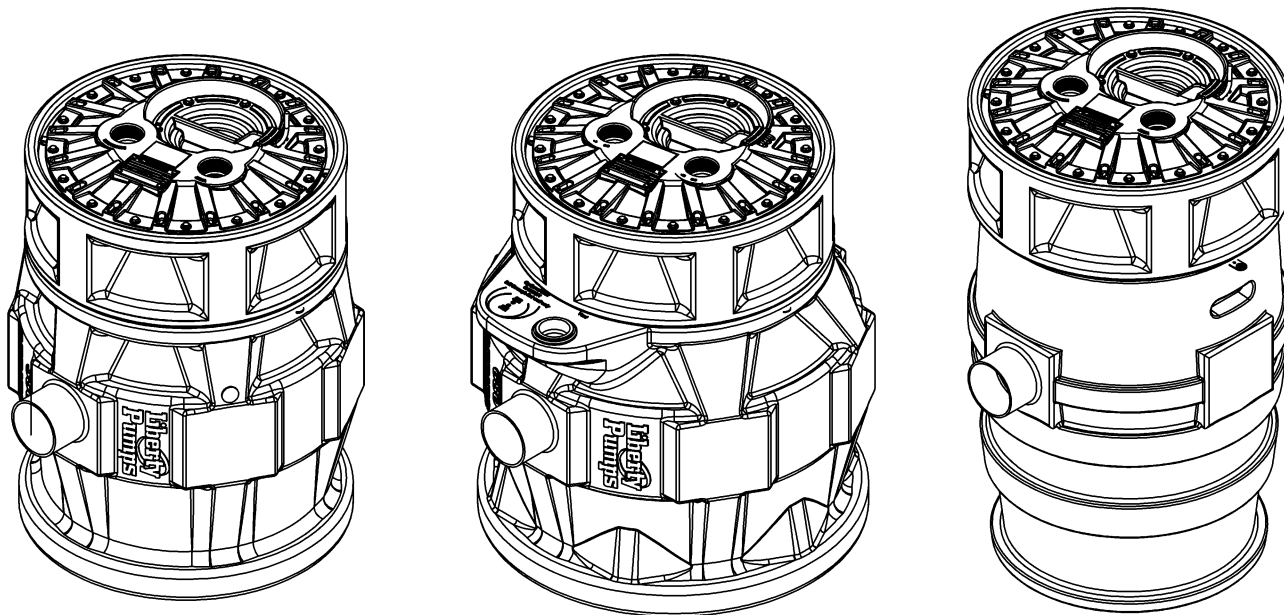
8" Basin Extension PRO SERIES

Model X8 FOR P380 AND P370 SYSTEMS

Model X8-D FOR P680 SYSTEMS

Model X8 and X8-D Include:

- 8" molded extension
- Rubber gasket seal
- (16) stainless steel studs and flange nuts
- Discharge pipe extenders



7000 Apple Tree Avenue
Bergen, NY 14416
Phone: (800) 543-2550
Fax: (585) 494-1839
www.libertypumps.com

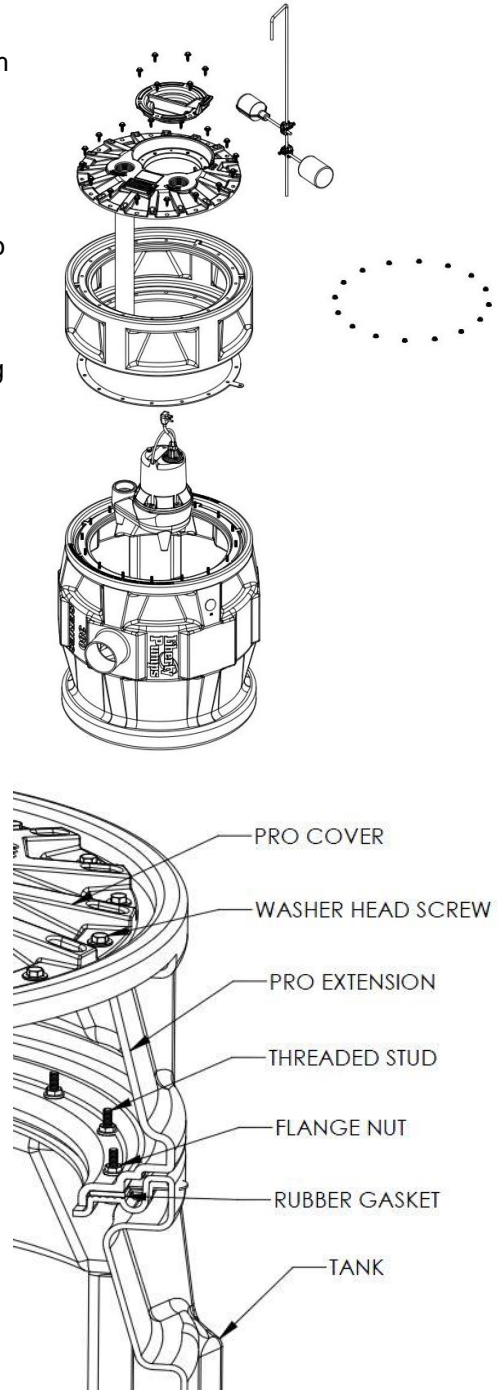
X8 and X8-D Extension Installation

Before installing the X8 or X8-D, basin extension, the pump and cover must be removed from an assembled PRO system.

- 1.) Remove the small access cover which is secured by 6 fasteners.
- 2.) Remove the QuickTree® (float rod and floats) from the basin by lifting the unit out of its holder.
- 3.) Unscrew the fasteners securing the main cover to the tank.
In order to remove the main cover it must be separated from the PVC discharge pipe. This can be done by rotating the cover back and forth while pulling upward.

Re-assembly:

- 1) The short length of pipe and the coupling must be “glued” to the current discharge pipe(s).
- 2) Place the pump(s) with pipe into the basin and position it within the torque stops. (The torque stops are the three round pockets located at the bottom of the basin.) Each leg of the pump should be inside one of the pockets.
- 3) Install the threaded stainless steel studs in tank finger tight until they bottom out in the threaded inserts. Standard systems will use (8) studs, XL systems will require (16) for proper sealing.
- 4) The gasket can now be placed over the studs and seated onto the tank’s rim.
- 5) Lower the extension over the studs until it is firmly seated on the sealing gasket.
- 6) Install the stainless steel flange nuts on the studs and torque to 40 in*lbs **IMPORTANT: Do not over tighten.**
- 7) Re-attach the main cover. To facilitate assembly, the PVC pipe should be wetted with soapy water and inserted into the rubber seal under the cover. The cover can be twisted back and forth while pushing down until the cover meets the extension. Re-attach the cover with the same screws that were removed. Note: XL-systems will have (16) screws.
- 8) A new longer QuickTree® rod is provided with the X8 extension. Remove the floats from the original QuickTree® rod by loosening the screw on the clamp. (For systems with an optional alarm, two floats need to be removed.)
- 9) Re-attach the floats to the new longer QuickTree® rod using the diagram (Figure 1 or 2) below. **IMPORTANT: It is critical that the tether length remains the same on re-installation. The tether length is the distance of cord from the clamp to the top of the float ball. See Figure 1 or 2. for proper lengths.**
- 10) The new QuickTree® rod has four “flat” sections; the upper two are used in a P380 system and the lower two on a P370 system. The lowest float is the pump control followed by the alarm float if the system is equipped with the alarm option.



PRO 380 and 680 SYSTEMS FLOAT TREE AND PIPE INSTRUCTIONS

**Original QuickTree®
(shorter)**

**Replacement
QuickTree®**

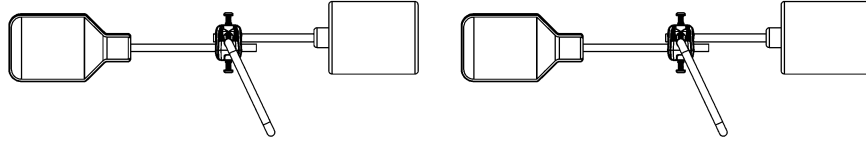
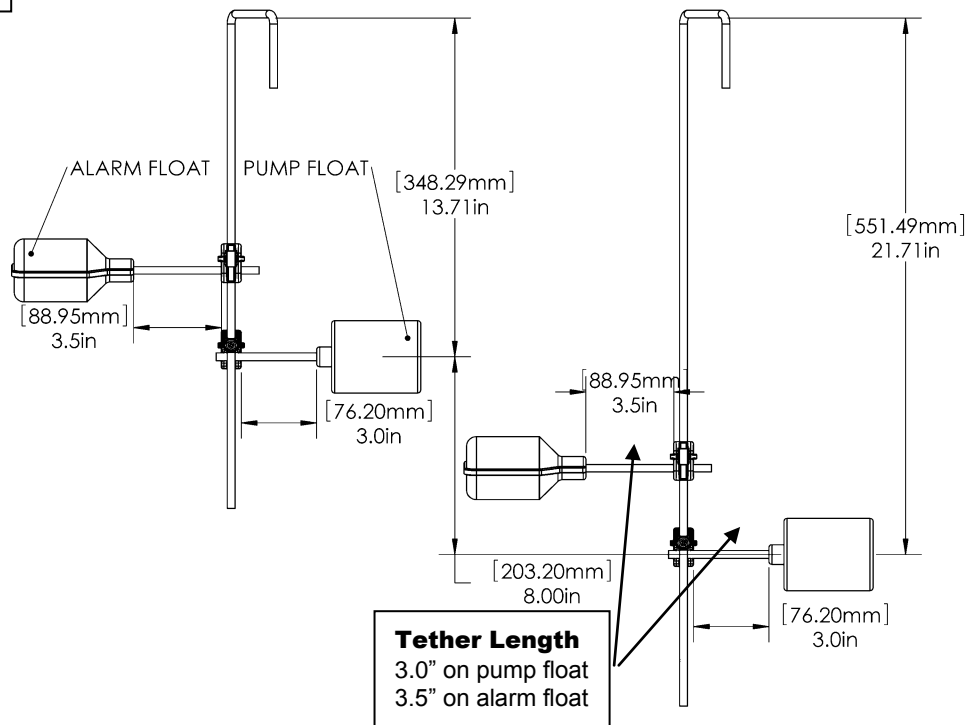


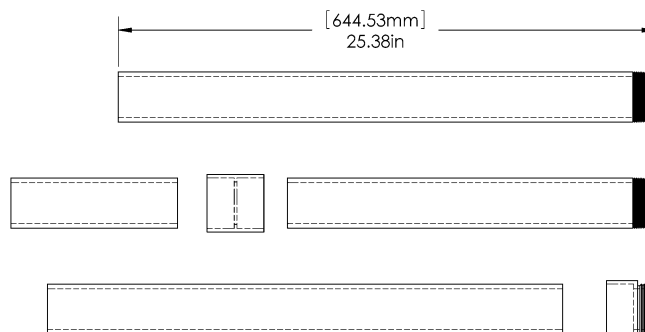
Figure 1.



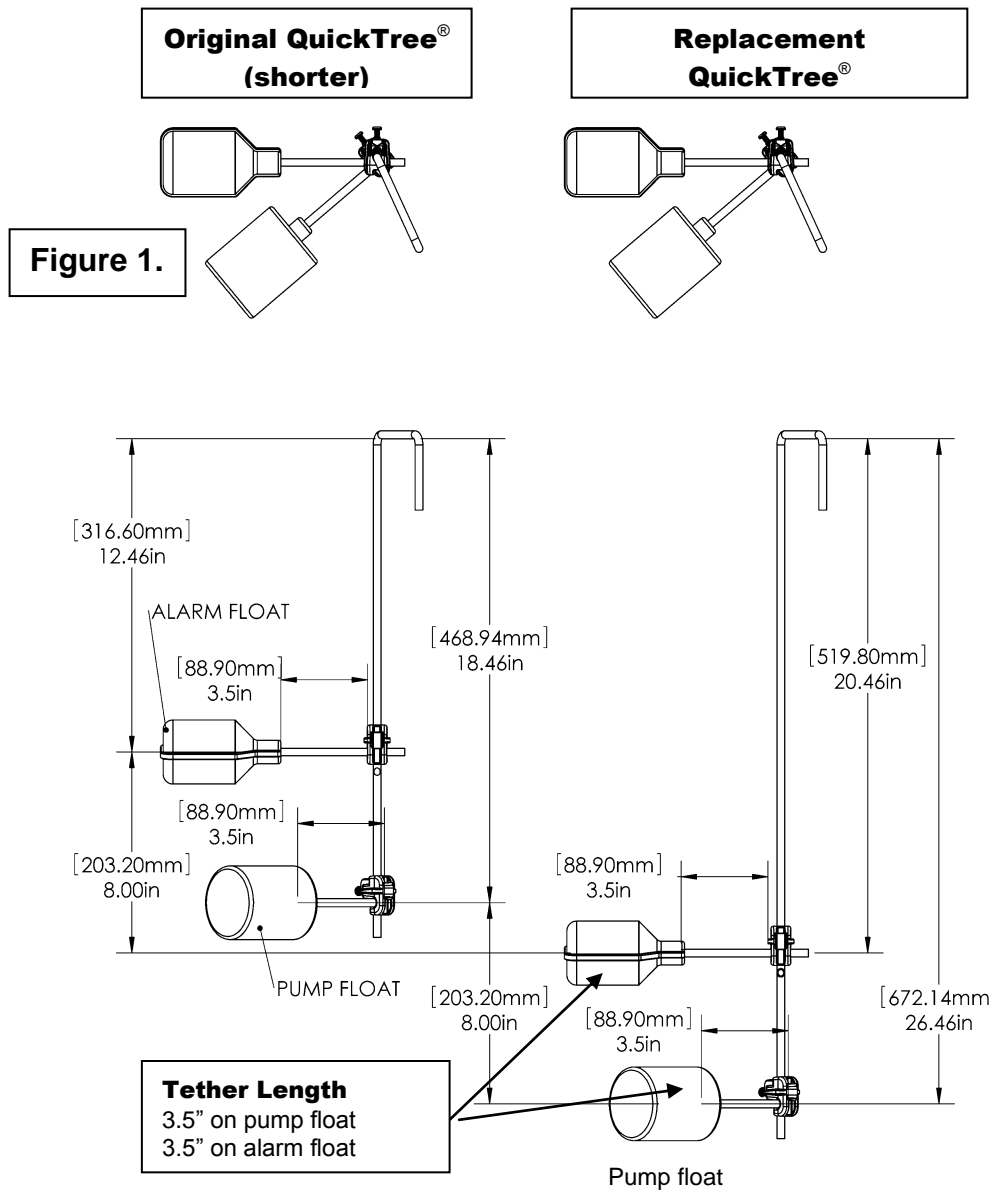
New Discharge Pipe configuration:

Note for PRO 380 and 680 systems only, the new length of pipe required is 25 3/8" which is 8" longer than the one in the system. The kit includes a coupling and short length of pipe that must be "glued" to the existing discharge pipe, X8-D contains two extensions.

Figure 2.



PRO 370 SYSTEMS FLOAT TREE AND PIPE INSTRUCTIONS



New Discharge Pipe configuration:

Note for PRO 370 systems only, the new length of pipe required is 31 5/8" which is 8" longer than the one in the system. The kit includes a coupling and short length of pipe that must be "glued" to the existing discharge pipe.

