

# SANI<sup>®</sup> 3 Macerator

## CONNECTIONS



TOILET



SINK



SHOWER



BATHTUB

## APPLICATIONS

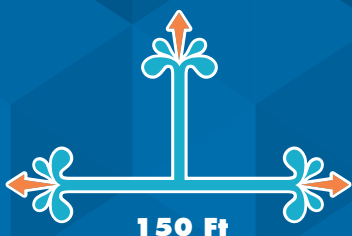


RESIDENTIAL



## PUMPING DISTANCE

15 Ft



150 Ft



## FULL VIEW OF COMPLETE BATHROOM



Example of installation. Follow local plumbing codes for actual install.

The **Sani 3** is a **1/2 HP pump system** used to install a complete residential bathroom up to **15 feet below the sewer line, or even up to 150 feet away** from a soil stack.

It incorporates a **macerating system** which can handle human waste and toilet paper in residential applications. The blade is made out of a hardened stainless steel material which **eliminates the need for any service or replacement.**

- **Discharges the waste through a 3/4" rigid pipe. A non-return valve is included** on the discharge elbow assembly provided with the system. This elbow can be rotated 360 degrees depending on the discharge installation.
  - Has been designed with a **1-1/2" vent connection** on the top of the lid. All plumbing codes require connection to a vent system. Please note that the vent system should be a two-way air vent as air needs to freely flow both ways. Note: The use of mechanical vents, air admittance valves or similar devices is not permitted.
  - Must be connected to **Saniflo's 1.28 GPF / 4.8 LPF rear discharge toilet**. These toilets come in round and elongated (ADA compliant) models. More technical information on page 6.
  - Will also discharge gray water from any **sink, bath/shower or urinal**. The wastewater will drain into the system via two 2" inlets with built-in check valves on either side of the housing.
- Note that when adding a bathtub/shower, the base should be raised up by a minimum of 6 to 8" off the floor.



### Toilet Tank

(Part N° 005)

Insulated 1.28 GPF / 4.8 LPF toilet tank equipped with all internal valves. For more information, please turn to page 6.

### Round/Elongated Bowl

(Part N° 083 or 087)

Rear discharge toilet with 16-3/4" seating height (Elongated bowl is ADA compliant). For more information, please turn to page 6.

### Extension Pipe

(Part N° 030) [Not visible in photo]

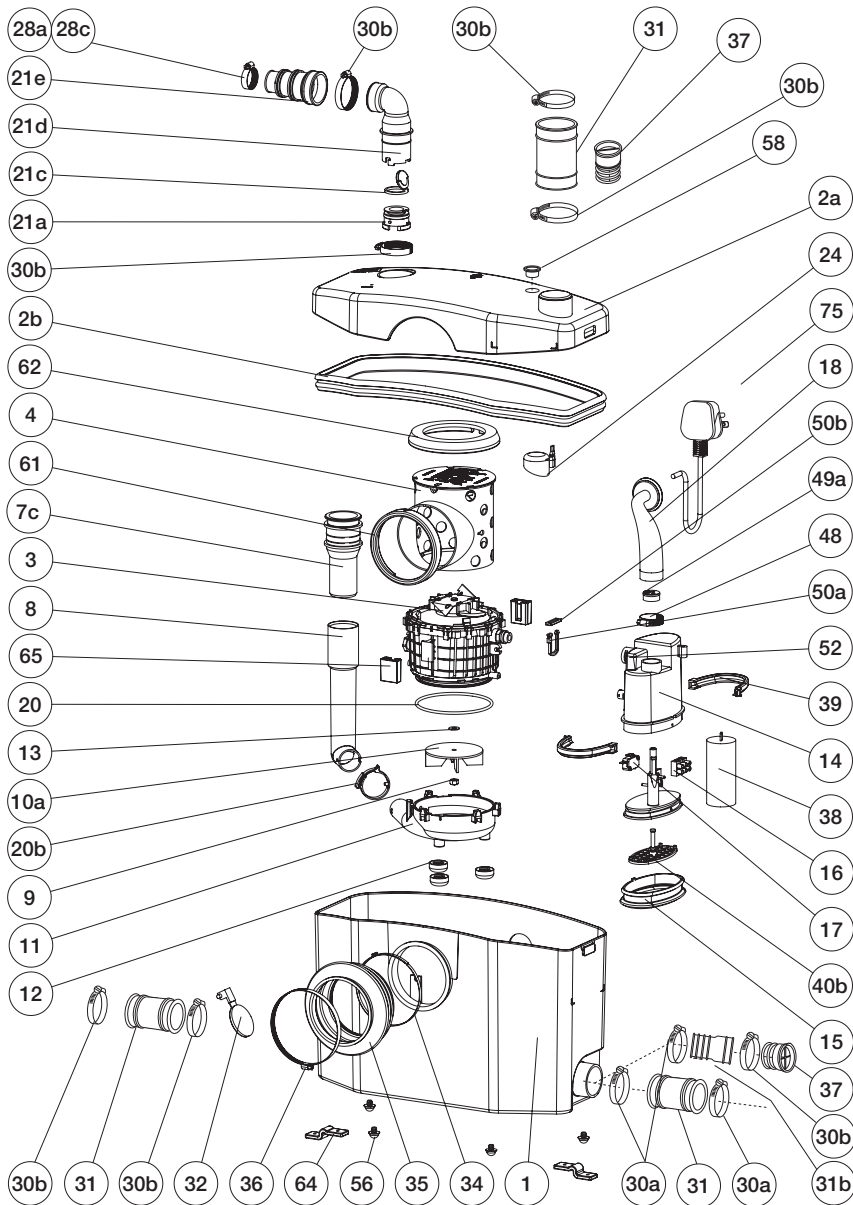
18" long PVC pipe with internal gasket used to hide the pump behind the wall. For more information, please turn to page 51.

### Sani 3

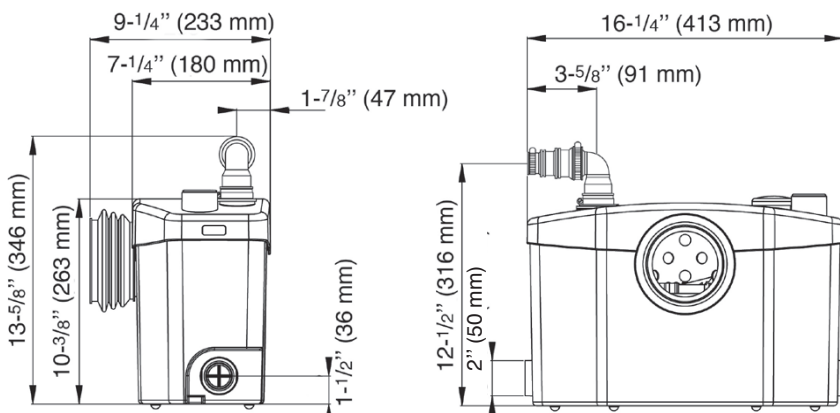
(Part N° 032)

1/2 HP macerating pump for residential applications. Ideal for creating a complete bathroom in a basement, attic, garage, pool house, etc.

PLEASE CALL US TOLL-FREE AT  
**800-571-8191 (US) / 800-363-5874 (CDN)**  
 TO PURCHASE PARTS REFERENCED BELOW



## DIMENSIONAL DRAWINGS



Choose any conventional toilet, shower, bathtub or sink  
 and enjoy your dream bathroom.

### Pump type:

Macerator

### Electrical:

120 V – 60 Hz / 4.5 Amps (Max)

### Motor:

1/2 HP oil-filled thermally protected motor

### Capacitor rating:

45 microfarad

### Operating Temperature:

104°F (110°F Max.)

### Power cord length:

47 1/2 inches

### Noise level:

≤ 53 dBA (Lp) (measured at 3 ft.)

### Discharge pipe diameter:

3/4"

### Discharge rate at 15 ft:

17 GPM / 66 LPM

### Discharge rate at 3 ft:

27 GPM / 103 LPM

### Shut-off head:

30 ft.

### Normal running time:

10 - 12 seconds

### Capacity:

3 gallons / 11.3 liters

### Inlets:

1 1/2" vent (top) 2" (sides)

### Method of activation:

Membrane/microswitch

### Shower/bathtub base height:

6" min

### Weight:

18 lbs / 8.16 kg

### Certifying agencies:

CSA (IPC, NSPC), IAPMO (UPC)

### Recommended accessories:

Descaler, Sanialarm

### Connections:

Rear outlet toilet, sink, shower/bathtub,

