

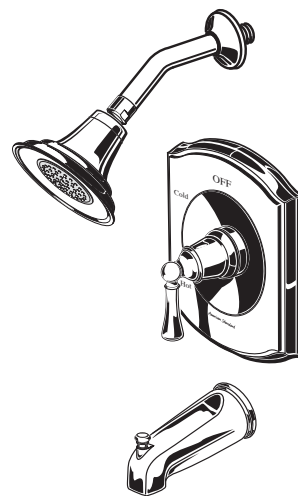
American Standard

Installation Instructions T0085XX

VENETIAN ANTI-SCALD TUB AND SHOWER SETS

*Thank you for selecting American-Standard...
the benchmark of fine quality for over 100 years.*

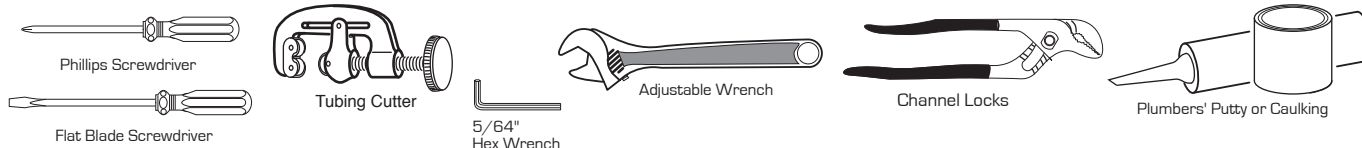
*To ensure that your installation proceeds smoothly—
please read these instructions carefully before you begin.*



Certified to comply with ANSI A112.18.1

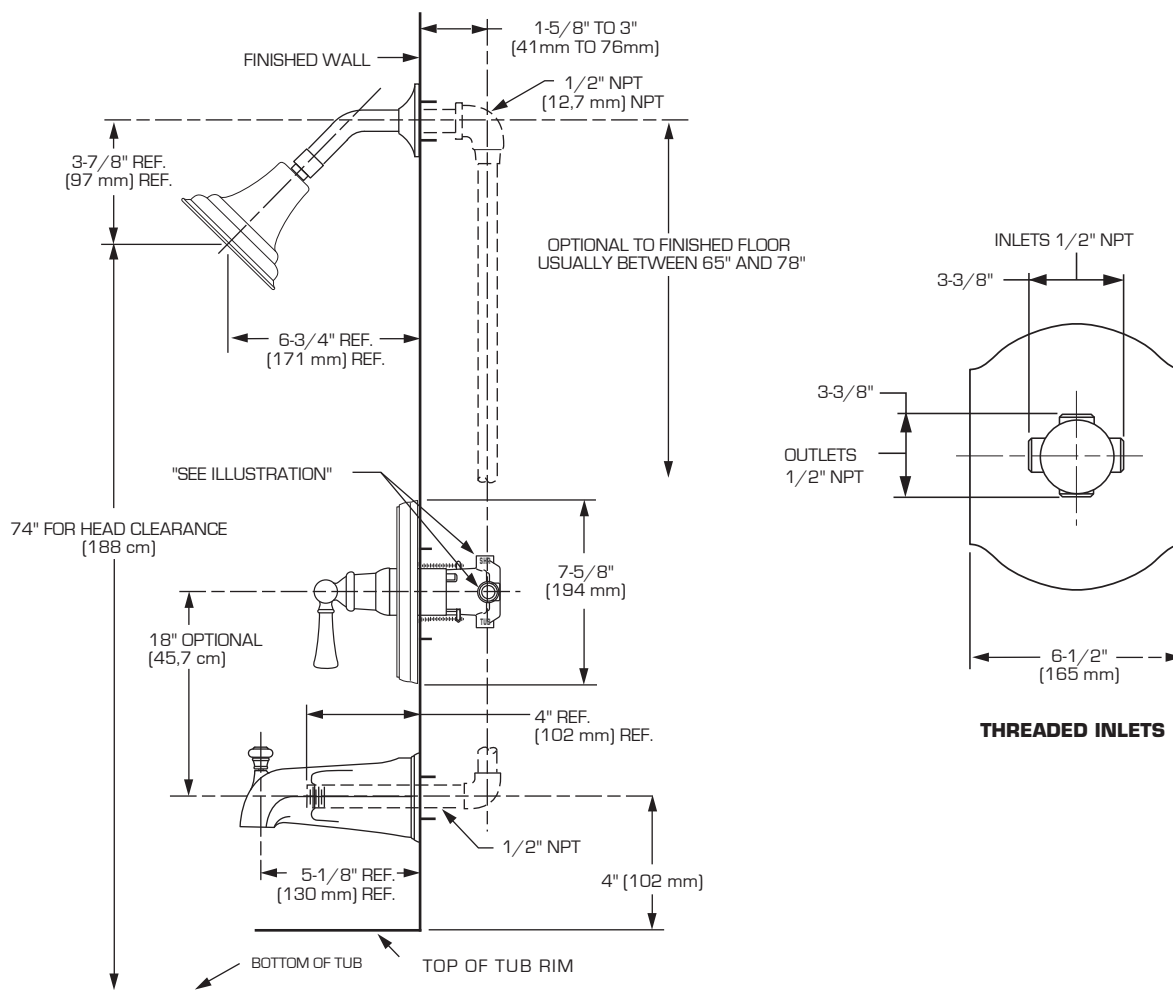
M968573

Recommended Tools



ROUGHING-IN DIMENSIONS

- To assure proper positioning in relation to wall, note roughing-in dimensions.



1

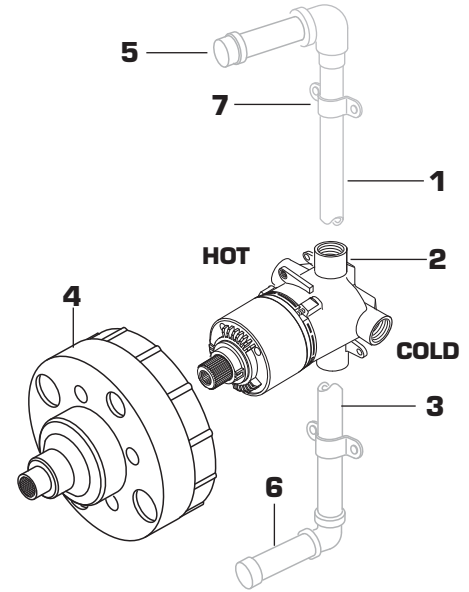
ROUGHING-IN

CAUTION

Turn off water at main supply.

NOTE When soldering, remove **PLASTER GUARD, CARTRIDGES** and **CHECK STOPS (IF PRESENT)**. When finished soldering, flush valve body, replace cartridges, check stops (if present) and plaster guard to continue installation. Use thread sealant or Teflon tape on threaded connections.

- See Roughing-in diagram before starting.
Connections are:
 - 1/2" female NPT for threaded inlets.
- Connect RISER PIPE (1) to MANIFOLD (2) top outlet marked "SHR".
- Connect TUB FILLER PIPE (3) at bottom outlet marked "TUB".
- For proper positioning the finished wall must be within side wall of PLASTER GUARD (4).
- If the valve is installed on a fiberglass or other thin wall application, the PLASTER GUARD (4) can be used as a support.
 - Cut a 3" dia. hole in the shower stall.
 - Drill two additional 1" holes to allow access to the stops.
 - Remove PLASTER GUARD (4), rotate 90° so that indicated screw holes fit MANIFOLD (2).
 - Push CAP on valve, place ESCUTCHEON on and attach with screws.
- Connect hot and cold water supplies.
- Cap off shower pipe (5) and tub filler pipe (6).
- For support, use pipe BRACES (7) secured to wooden braces.
- With valve turned off, turn on water supplies. Check for leaks.

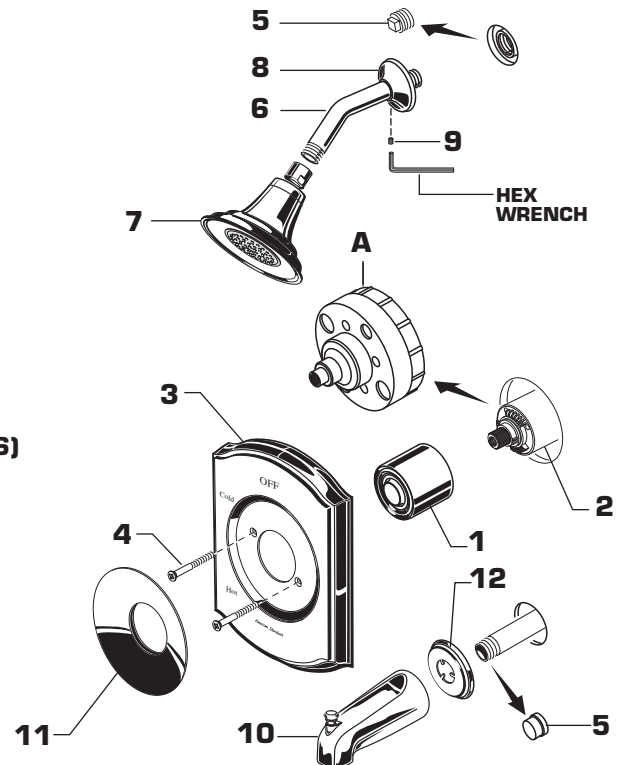


2

INSTALL TRIM

CAUTION: Protect finish on SHOWER ARM, SHOWER HEAD and TUB SPOUT when installing.

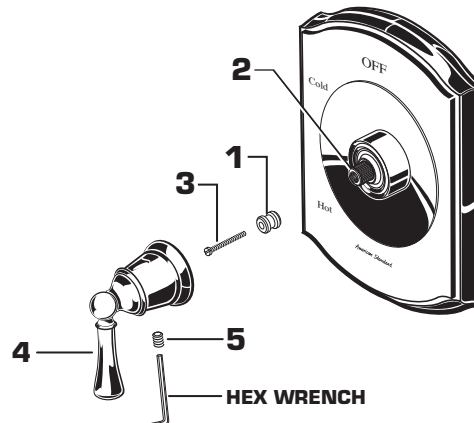
- When finished tiling the wall, remove PLASTER GUARD (A) and turn off water supply.
- Push CAP (1) over VALVE CARTRIDGE (2).
- Mount ESCUTCHEON (3) and gasket to valve body with SCREWS (4).
- Press DIAL PLATE (11) onto CAP (1), flush against ESCUTCHEON (3).
- Remove PIPE CAP & PLUG (5) from shower pipe and tub filler pipe.
- Apply Teflon Tape to both ends of SHOWER ARM (6). Install SHOWER ARM (6) with FLANGE (8) into shower pipe and tighten.
- Thread SHOWER HEAD (7) onto ARM (6) and tighten.
- Push SHOWER ARM FLANGE (8) to wall and tighten SET SCREW (9) with 5/64" hex wrench.
- Apply Teflon Tape to spout filler pipe and install SPOUT ESCUTCHEON (12) and DIVERTER SPOUT (10).



3

INSTALL HANDLE and TEST FITTING

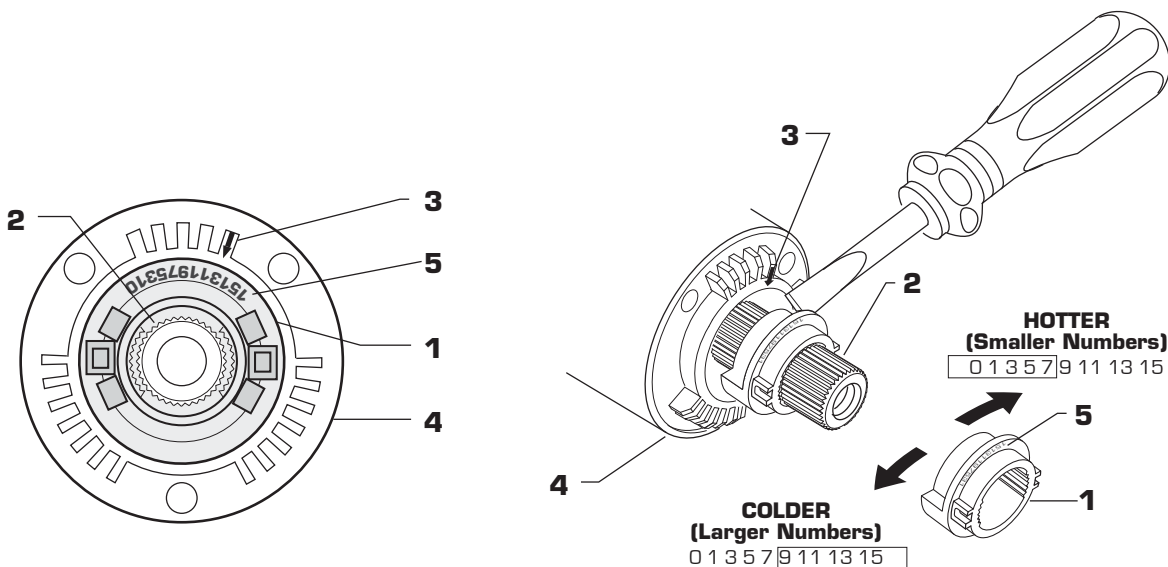
- Install ADAPTER (1) onto VALVE STEM (2) using SCREW (3).
- Align and install HANDLE (4). Tighten SET SCREW (5) using 2.5mm Hex Wrench supplied.
- Check proper operation of HANDLE (4).
- Turn on water supply on and test installed fitting. Operate valve and diverter spout.



4

ADJUST HOT LIMIT STOP

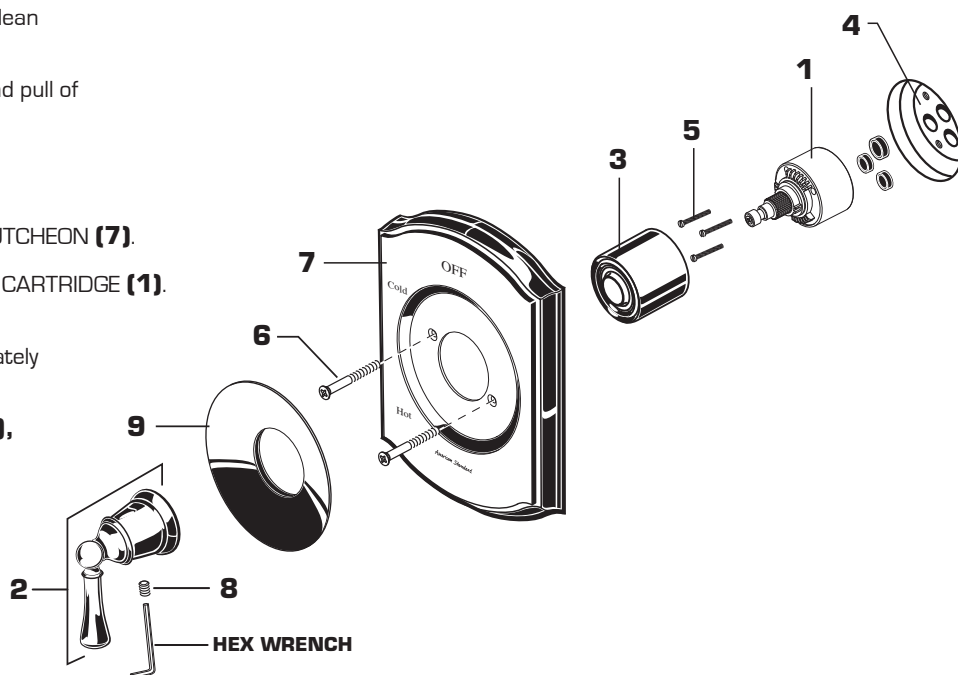
- By restricting HANDLE rotation and limiting the amount of hot water allowed to mix with the cold, the HOT LIMIT SAFETY STOP **(1)** reduces risk of accidental scalding. To set the maximum hot water temperature of your faucet, all you need to do is adjust the setting on the HOT LIMIT SAFETY STOP **(1)**.
- Turn CARTRIDGE STEM **(2)** to the OFF position [coldest setting] before making adjustment to HOT LIMIT SAFETY STOP **(1)**. Use a flat blade screwdriver to pry free the HOT LIMIT SAFETY STOP **(1)**. Pull forward and rotate counterclockwise one number to limit hot water temperature. Use ARROW **(3)** on CARTRIDGE **(4)** and NUMBERS **(5)** on HOT LIMIT STOP **(1)** for indication.



5

SERVICE

- If faucet drips, operate handle several times from "off" to "on". Do not apply excessive force.
- Clogged CARTRIDGE **(1)** inlets may cause reduced flow in "full on" hot or cold. To clean inlets, first turn off water supply, then:
 - Loosen HANDLE SET SCREW **(8)** and pull of HANDLE **(2)**.
 - Pull off DIAL PLATE **(9)**.
 - Remove two SCREWS **(6)** holding ESCUTCHEON **(7)** and remove ESCUTCHEON **(7)**.
 - Remove CAP **(3)**, SCREWS **(5)** and CARTRIDGE **(1)**. Clean inlets and MANIFOLD **(4)**.
 - Reassemble CARTRIDGE **(1)**, alternately tightening SCREWS **(5)**.
 - Replace CAP **(3)**, ESCUTCHEON **(7)**, DIAL PLATE **(9)** and HANDLE **(2)**. Check flow.



5a

SERVICE: VALVE LEAKS WHEN SHUT OFF

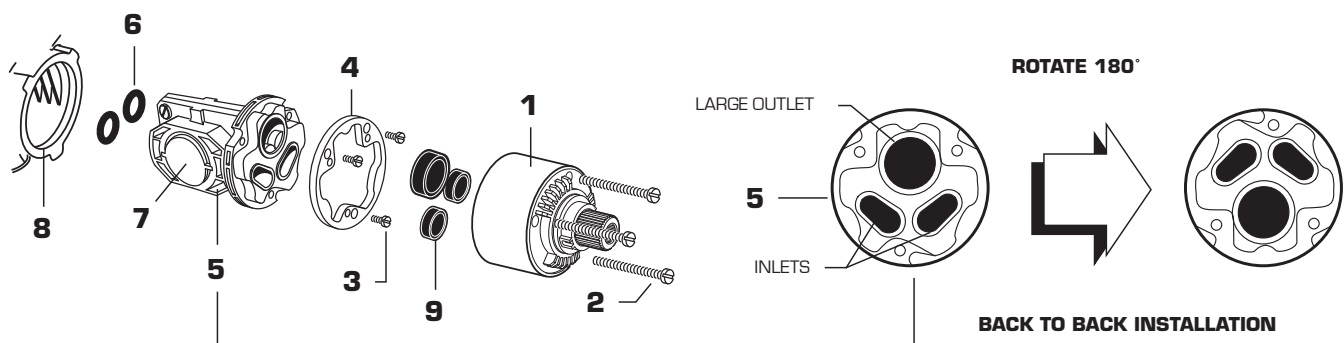
- Remove handle and trim, refer to **step 5**.
- Remove CARTRIDGE **(1)** by removing CARTRIDGE SCREWS **(2)**. Remove three SCREWS **(3)** from FIXATION RING **(4)** and pull out PRESSURE BALANCING **(5)** unit.
- Clean SEALS **(9)** on base of CARTRIDGE **(1)**. Check base of PRESSURE BALANCING UNIT **(5)** and clean O-RINGS **(6)**. Remove CAPS **(7)** and check O-RINGS on inside of CAPS **(7)**. Clean inside sealing surfaces of VALVE BODY **(8)**.
- Re-assemble PRESSURE BALANCING UNIT **(5)** and CARTRIDGE **(1)**. Tighten all screws.
- Turn on water supply and see above for installing TRIM and HANDLE.

UNABLE TO MAINTAIN CONSTANT TEMPERATURE

- Remove PRESSURE BALANCE UNIT **(5)**.
- Remove CAPS **(7)** and clean valve thoroughly.
- Examine balancing unit and check condition of O-ring on end of piston. Piston should move back and forth. Order Repair Part M952100-0070A if balancing unit is defective.
- Replace CAPS **(7)** and install PRESSURE BALANCE UNIT **(5)**. Make sure inlets line up with two holes in bottom of casting. Top flange should butt-up against top of casting.

BACK TO BACK INSTALLATION

- Remove PRESSURE BALANCE UNIT **(5)**. Rotate PRESSURE BALANCE UNIT **(5)** 180° so that the inlets face up and the large outlet port faces down.
- Push PRESSURE BALANCE UNIT **(5)** in casting make sure inlets line up with holes in bottom of casting. Top flange should butt up against top of casting.
- Reassemble FIXATION RING **(4)** and CARTRIDGE **(1)**.



6

CARE INSTRUCTIONS

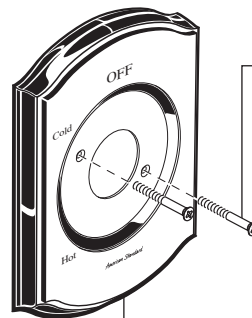
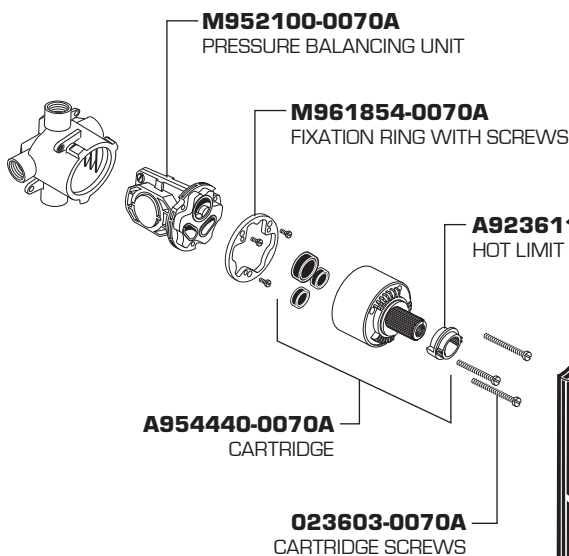
DO: SIMPLY RINSE THE PRODUCT CLEAN WITH CLEAR WATER. DRY WITH A SOFT COTTON FLANNEL CLOTH.

DO NOT: CLEAN THE PRODUCT WITH SOAPS, ACID, POLISH, ABRASIVES, HARSH CLEANERS, OR A CLOTH WITH A COARSE SURFACE.

American Standard

VENETIAN ANTI-SCALD IN-WALL PRESSURE BALANCING TUB AND SHOWER MODEL NUMBER

T0085XX



078016-YYY0A
ESCUTCHEON SCREWS

M962594-0070A
DIAL PLATE & SEAL

M918460-0070A
HANDLE ADAPTER

M918305-0070A
ADAPTER SCREW

M962595-YYY0A
LEVER HANDLE

907520-YYY0A
SPOUT ESCUTCHEON



Replace the "YYY" with appropriate finish code

| | |
|--------------|-----|
| CHROME | 002 |
| SATIN NICKEL | 295 |



HOT LINE FOR HELP

For toll-free information and answers to your questions, call:
1-800-442-1902
Weekdays 8:00 a.m. to 6:00 p.m. EST
IN CANADA 1-800-387-0369 (TORONTO 1-905-306-1093)
Weekdays 8:00 a.m. to 7:00 p.m. EST
IN MEXICO 01-800-839-12-00

Product names listed herein are trademarks of American Standard Inc.
© AS America, Inc. 2008

M968573