



AMERICAN STANDARD

PERCY™ WALL MOUNT FAUCET



- Cast brass spout
- Ceramic disc valve cartridges
- Distinct, geometric handle design
- Lead Free - faucet contains $\leq 0.25\%$ total lead content by weighted volume
- Maximum Flow Rate: 1.5 GPM (5.7L/min)

CODES AND STANDARDS

Meets or Exceeds ASME A112.18.1/
CSA B125.1/NSF 61/Section 9

EPA WaterSense® High Efficiency
Lavatory Faucet Specification

Certified Compliant with 0.25% Weighted
Average Lead Content Regulations

AVAILABLE FINISHES

Polished Chrome
Brushed Nickel

FINISH CODE

100
144



DESCRIPTION

Wall Mount Faucet
— Cross Handles
— Lever Handles

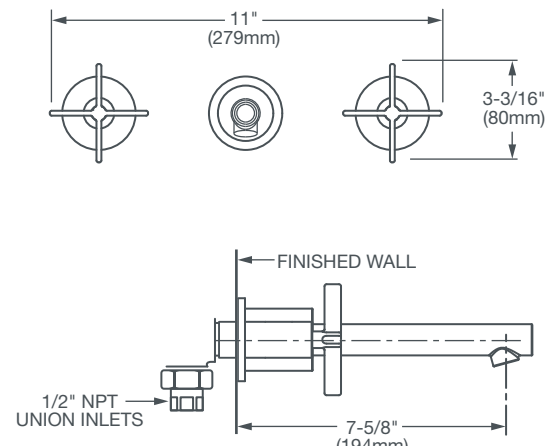
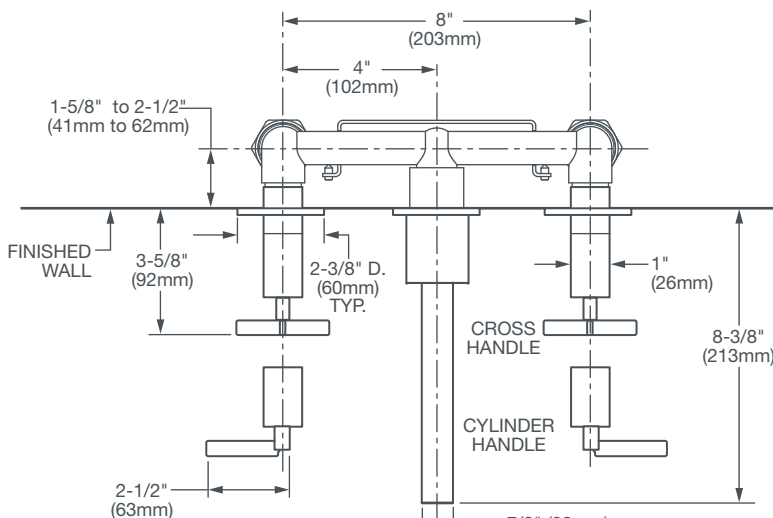
REQUIRED COMPONENT

Dual Control Wall Mount
Faucet Rough Valve

PRODUCT NUMBER

D35105454.XXX
D35105450.XXX

D35000450.191



IMPORTANT: These measurements are subject to change or cancellation.
No responsibility is assumed for use of superseded or voided pages.

©2014 AS America Inc.



Meets the Americans with Disabilities Act
Guidelines and ANSI A117.1 Requirements
for the physically challenged.