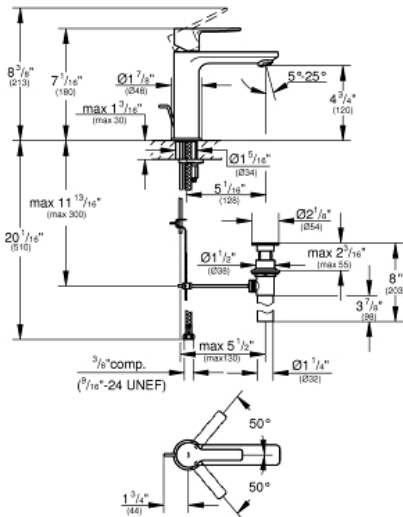


LINEARE Single-Handle Bathroom Faucet S-Size

MODEL # 23794ENA

GROHE CANADA, INC. | 5900 Avebury Road, Mississauga, Ontario, Canada L5R 3M3
Phone: 905-271-2929 | Fax: 905-271-9494 | info@grohe.ca

Pure Freude
an Wasser



Product Description:
LINEARE
Single-Handle Bathroom Faucet S-Size

Standard Specification:

- Single hole installation
- Metal lever handle
- **GROHE SilkMove** 28 mm (1.1") ceramic cartridge
- With temperature limiter
- **GROHE StarLight** finish
- Includes waste-set drain assembly
- **GROHE AquaGuide** adjustable flow control
- Stainless steel flex lines
- **GROHE QuickFix** installation system

Applicable Codes & Standards:

- Energy Policy Act of 1992
- NSF 61
- ASME A112.18.1/CSA B125.1
- US Federal and State material regulations
- EPA WaterSense®
- ICC/ANSI A117.1
- LOGO CEC
- LOGO NSF

Color:

- 23794ENA Brushed nickel