

TROPIC PETITE SINK WITH PEDESTAL

- Vitreous china
- Contemporary styled sink and pedestal
- Rear overflow
- Supplied with mounting kit
- Right Height™ for greater comfort during use
- Faucet ledge with large deck area
- Recommended Tropic Faucets 7038 801 widespread and 7038 201 centreset (faucets not included)
- Sink has flat bottom to also allow use as an above counter sink or a countertop sink
- Recommended with 9212 030 Tropic 30" vanity and 9212 124 Marble Top
- **Style coordinates with Tropic Cadet®3 toilets**

- ☐ **0403 400** Faucet holes on 102mm (4") centres
- ☐ **0403 800** Faucet holes on 203mm (8") centres (Illustrated)
- ☐ **0403 100** Faucet centre hole only (Available in white only)

Nominal Dimensions:

531 x 470 x 915mm
(21" x 18-1/2" x 36")

SEPARATE COMPONENT PARTS:

- ☐ **0403 004** Pedestal Top - 102mm (4") centres
- ☐ **0403 008** Pedestal Top - 203mm (8") centres
- ☐ **0403 001** Pedestal Top - Centre hole only
(Available in white only)
- ☐ **0010 000** Pedestal base only

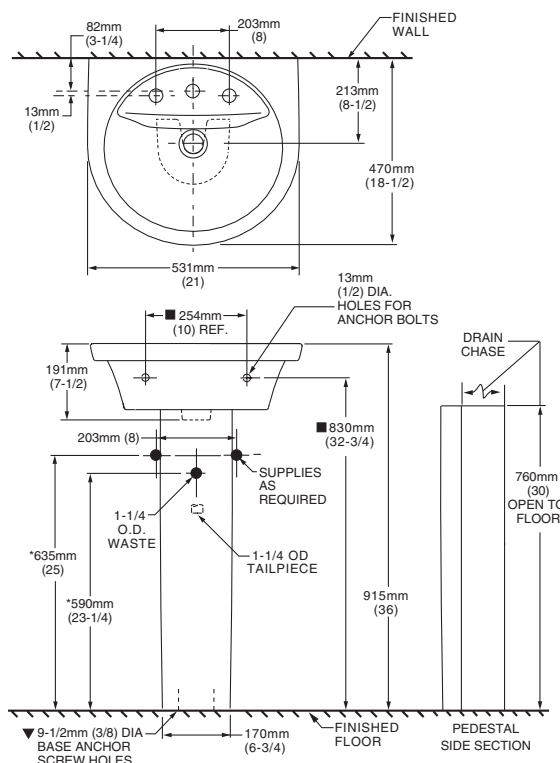
Bowl Sizes:

445mm wide, 292mm front to back, 152mm deep (17-1/2" wide, 11-1/2" front to back, 6" deep)

Compliance Certifications -

Meets or Exceeds the Following Specifications:

- ASME A112.19.2M for Vitreous China Fixtures.
- CAN/CSA B45 Series.



NOTES:

★ DIMENSIONS SHOWN FOR LOCATION OF SUPPLIES AND "P" TRAPS ARE SUGGESTED.
▼ PEDESTAL ANCHORING SCREWS NOT INCLUDED. INSTALLATION INSTRUCTIONS SUPPLIED WITH BASIN.
■ SUITABLE FOR REINFORCEMENT ONLY. ACTUAL DIMENSIONS MUST BE TAKEN FROM FIXTURE.
FAUCETS NOT INCLUDED AND MUST BE ORDERED SEPARATELY. PROVIDE SUITABLE REINFORCEMENT FOR ALL WALL SUPPORTS.
IMPORTANT: Dimensions of fixtures are nominal and may vary within the range of tolerance established by ANSI Standard A112.19.2
These measurements are subject to change or cancellation. No responsibility is assumed for use of superseded or voided pages.

To Be Specified

- ☐ Colour: ☐ White ☐ Bone ☐ Linen ☐ Black
- ☐ Faucet*:
- ☐ Faucet Finish:
- ☐ Supplies & Stops:
- ☐ Trap 1-1/4" (32 mm):

* See faucet section for additional models available