



AMERICAN STANDARD

## LYNDON™

### TWO-PIECE RIGHT HEIGHT® ELONGATED DUAL FLUSH TOILET



#### **D2210AA200.XXX**

##### **FEATURES**

- Elongated bowl design
- Vitreous china
- 12" (305mm) rough-in
- Siphon action jetted bowl with smooth-sided, concealed trapway
- High efficiency, dual flush, low consumption 1.28gpf/4.8Lpf conserving flush 1.0 gpf/3.8Lpf
- EverClean® surface inhibits the growth of stain- and odor-causing bacteria, mold, and mildew on the surface
- PowerWash® rim scrubs bowl with each flush
- 16-1/2" (419 mm) rim height
- Fully-glazed 2-1/8" trapway
- 3" Flush valve
- Includes slow-close telescoping seat
- Chrome top mounted push button actuator
- Color matched bolt hole covers

##### **DIMENSIONS**

###### **NOMINAL DIMENSIONS**

30-3/16" x 15-1/8" x 31-9/16" (767 x 384 x 802 mm)

##### **COLORS/FINISHES**

Canvas White (415)

##### **TOILET SEAT (INCLUDED)**

**5011A10G.415** Elongated, Slow Close, Topmount, Easy Lift Off, Telescoping — Canvas White (415)

##### **SEPARATE COMPONENTS**

###### **D23226A000.415**

Right Height® Elongated bowl

###### **D24434A200.415**

Tank, 1.0/1.28 gpf Dual Flush 12" rough-in complete with coupling components and tank trim.

###### **735179-400.XXX**

Tank Cover - Lyndon Two-Piece

##### **OPTIONAL ACTUATOR BUTTON FINISH**

###### **7381338-200-2950A**

Satin Nickel (295)

###### **7381403-400.0070A**

Dual Flush Valve Assembly

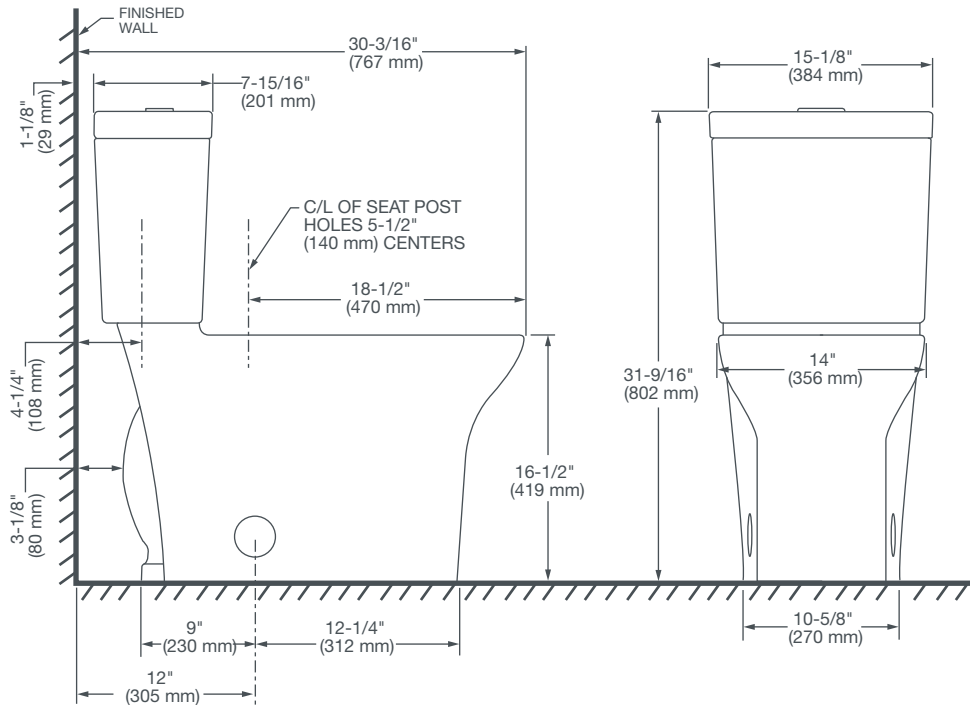
##### **COMPLIANCE CERTIFICATIONS**

Meets or Exceeds ASME A112.19.2-2008/CSA B45.1-08

ROUGH IN DIAGRAM SHOWN  
ON REVERSE SIDE

# LYNDON™

## TWO-PIECE RIGHT HEIGHT® ELONGATED DUAL FLUSH TOILET



### NOTES:

This toilet is designed to rough-in at a minimum dimension of 12" (305mm) from finished wall to C/L of outlet.

Supply not included with fixture and must be ordered separately.

\* Dimensions shown for location of supply is suggested.

### IMPORTANT:

Dimensions of fixtures are nominal and may vary within the range of tolerance established by ANSI Standard A112.19.2.

These measurements are subject to change or cancellation. No responsibility is assumed for use of superseded or voided pages.