

MODEL NUMBER:

**STUDIO® ACTIVATE™ CONCEALED TRAPWAY
RIGHT HEIGHT® ROUND FRONT TOILET**

2795 119 RIGHT HEIGHT® ROUND FRONT TOILET

- Toilet with touchless flush activation
- Combination bowl and tank, with seat
- 12" (305 mm) rough-in
- Siphon action jetted bowl with smooth-sided, concealed trapway
- Ultra-low consumption (1.28 gpf/4.8 Lpf) utilizes 20% less water
- Meets EPA WaterSense® Criteria
- EverClean® Surface included
- PowerWash® rim scrubs bowl with each flush
- 16-1/2" (419mm) rim height for accessible applications
- Fully-glazed 2-1/8" trapway
- Oversized 3" flush valve
- Generous 9" x 8" water surface area
- Includes Duroplast slow close seat and cover with concealed seat ring and easy lift-off feature for simple removal and reattachment for cleaning
- Wave hand actuator with manual override flush button
- Powered by 4 AA batteries (included)
- 2 color matched bolt hole covers
- 10 year warranty on chinaware; 1 year warranty on electronics
- **Design coordinates with Studio® and Boulevard® lavatories**

3053 120 RH RF Studio Bowl with seat

4000 119 Studio Activate HET Tank

5212 210 Telescoping Seat



2795 119 Shown

Nominal Dimensions:

716 x 399 x 781 mm (28-3/16" x 15-3/4" x 30-3/4")

Fixture with seat, supply by others

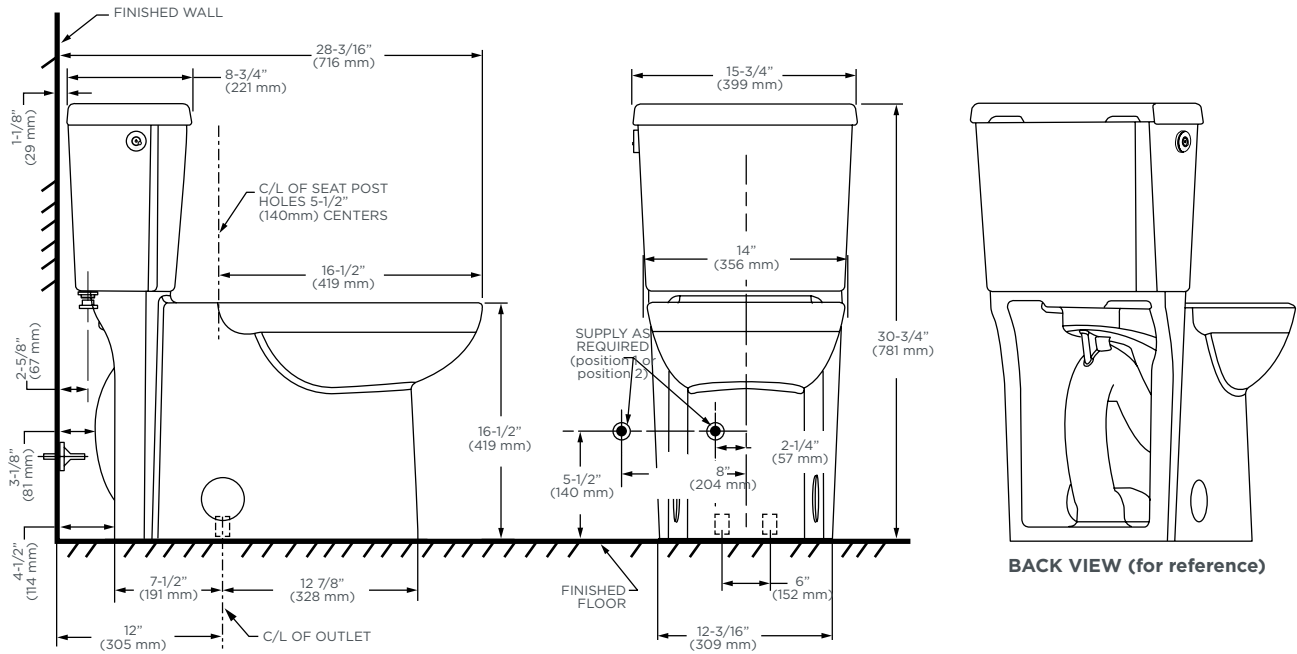
**Compliance Certifications -Meets or Exceeds the
Following Specifications:**

- ASME A112.19.2-2008/CSA B45.1-08 for Vitreous China Fixtures



**MEETS THE AMERICANS WITH DISABILITIES ACT GUIDELINES AND ICC
ANSI A117.1 REQUIREMENTS FOR ACCESSIBLE AND USABLE BUILDING
FACILITIES-CHECK LOCAL CODES.**





IMPORTANT: Water supply on the wall is required at 2-1/4" or 8" from centerline of the toilet (see rough-in). First suggested position is hidden behind the toilet. The geometry of the toilet gives space for this installation. The second suggested position is next to the toilet. Between these two positions, the space for the supply between wall and toilet is limited to 4-1/2". In this case, check your supply and hose dimensions.

NOTES:

THIS TOILET IS DESIGNED TO ROUGH-IN AT A MINIMUM DIMENSION OF 305MM (12") FROM FINISHED WALL TO C/L OF OUTLET.

SUPPLY NOT INCLUDED WITH FIXTURE AND MUST BE ORDERED SEPARATELY.

* DIMENSION SHOWN FOR LOCATION OF SUPPLY IS SUGGESTED.

IMPORTANT: Dimensions of fixtures are nominal and may vary within the range of tolerances established by ANSI Standard A112.19.2.

These measurements are subject to change or cancellation. No responsibility is assumed for use of superseded or voided pages.