

*American Standard*

# Installation Instructions 4285.551

## PORTSMOUTH™ DUAL CONTROL HIGH-ARC KITCHEN FAUCET

*Thank you for selecting American Standard...  
the benchmark of fine quality for over 100 years.*

*To ensure that your installation proceeds smoothly—  
please read these instructions carefully before you begin.*



Certified to comply with ASME A112.18.1M

M965459 Rev. 1.1

### RECOMMENDED TOOLS



Channel Locks



Adjustable Wrench



Plumbers' Putty or Caulking

## 1

### INSTALL FAUCET and SPRAY

#### CAUTION

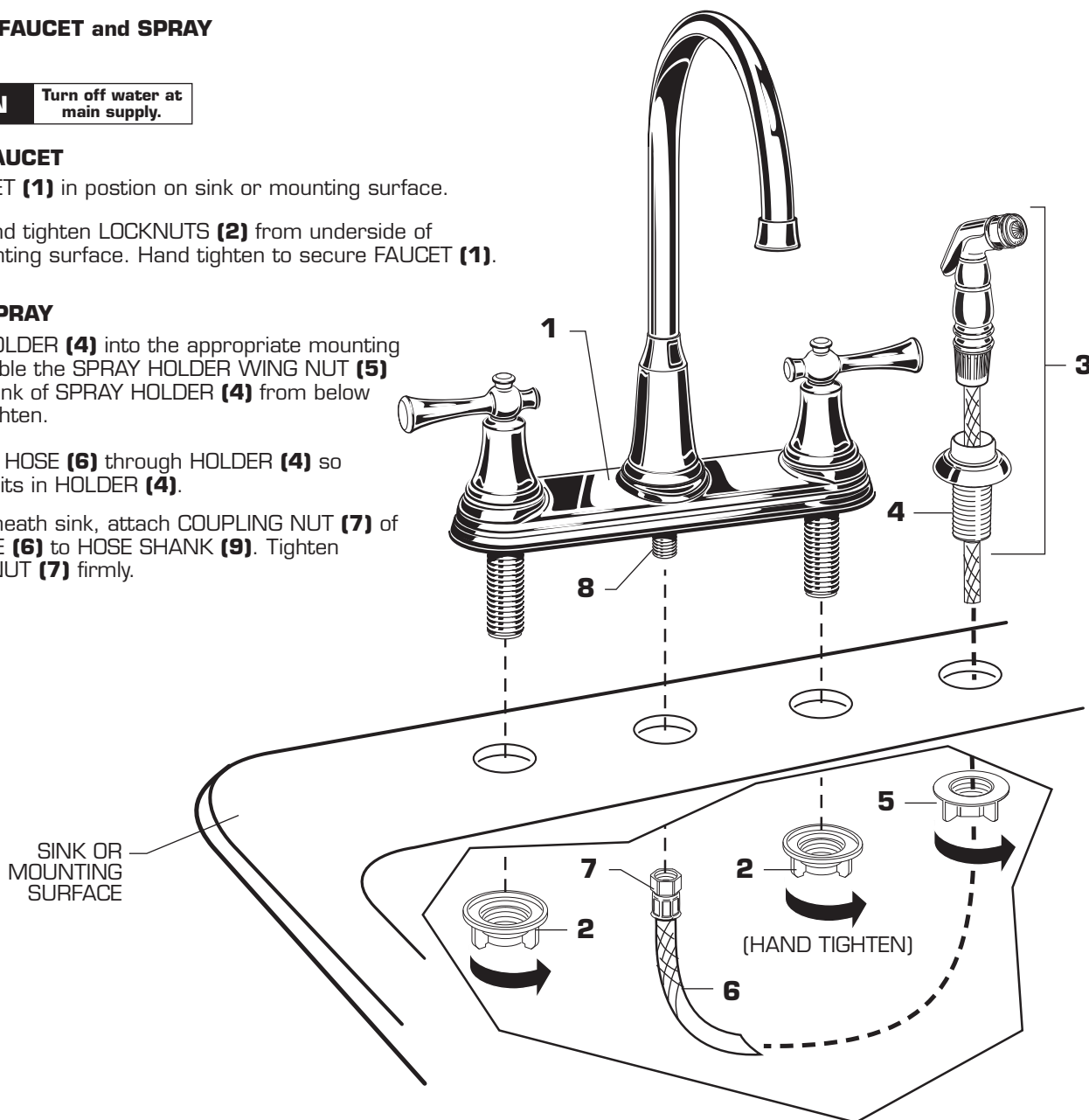
Turn off water at  
main supply.

#### INSTALL FAUCET

- Place FAUCET (1) in position on sink or mounting surface.
- Assemble and tighten LOCKNUTS (2) from underside of sink or mounting surface. Hand tighten to secure FAUCET (1).

#### INSTALL SPRAY

- Place the HOLDER (4) into the appropriate mounting hole. Assemble the SPRAY HOLDER WING NUT (5) onto the shank of SPRAY HOLDER (4) from below and hand tighten.
- Feed SPRAY HOSE (6) through HOLDER (4) so SPRAY (3) sits in HOLDER (4).
- From underneath sink, attach COUPLING NUT (7) of SPRAY HOSE (6) to HOSE SHANK (9). Tighten COUPLING NUT (7) firmly.

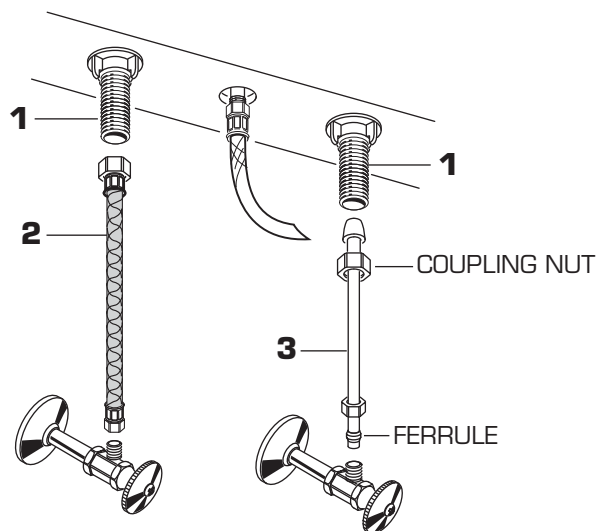


## 2

### MAKE WATER SUPPLY CONNECTIONS

**NOTE: FLEXIBLE SUPPLIES OR BULL-NOSE RISERS MUST BE PURCHASED SEPARATELY.**

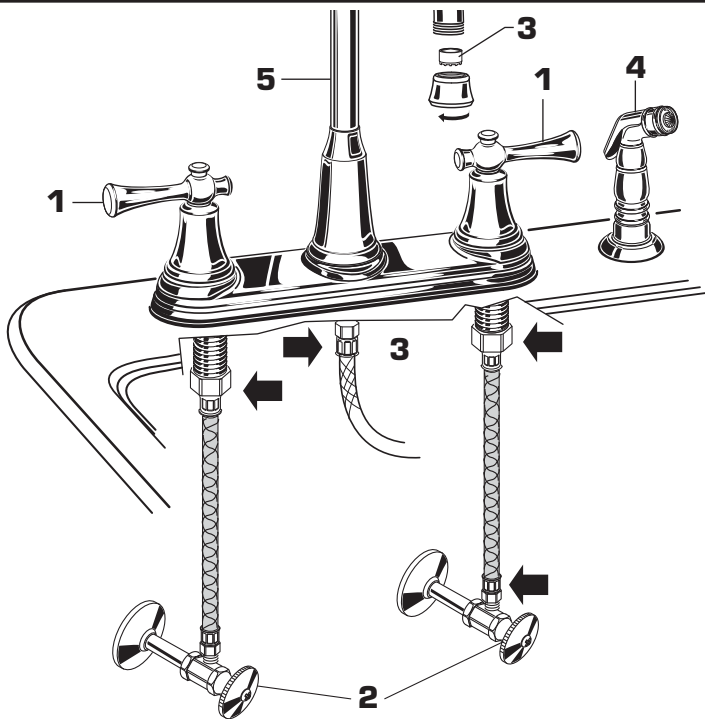
- Connect water supply to FAUCET **(1)** with 1/2" IPS FLEXIBLE SUPPLIES **(2)** or 3/8" O.D. BULL-NOSE RISERS **(3)**.
- Use adjustable wrench to tighten connections. Do not over tighten. For BULL-NOSE RISERS **(3)**, be careful not to kink copper supply when bending. Use of tubing cutter may be required to cut to proper length.



## 3

### TEST INSTALLED FITTING

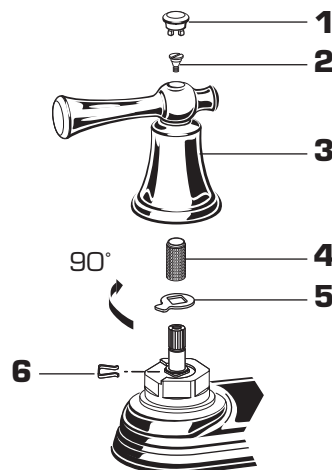
- With HANDLES **(1)** in OFF position, turn on WATER SUPPLIES **(2)** and check all connections for leaks. ➡
- Remove AERATOR **(3)**.
- Operate both HANDLES **(1)** to flush water lines thoroughly.
- Rotate SPOUT **(5)** in both directions.
- Replace AERATOR **(3)**.
- Direct SPRAY **(4)** into sink and activate. Check hose connections for leaks.



## 4

### SERVICE

- To change direction of handle rotation, proceed as follows:
  - Turn valve to OFF position.
  - Pull out INDEX CAP **(1)** and remove HANDLE SCREW **(2)**.
  - Pull off HANDLE **(3)**.
  - Pull off STEM ADAPTER **(4)**.
  - Remove SPRING CLIP **(6)**.
  - Lift STOP WASHER **(5)**, turn 90° and replace.
  - Replace SPRING CLIP **(6)** and STEM ADAPTER **(4)**.
  - Reinstall HANDLE ASSEMBLY **(1,2 & 3)**.
- If spout drips, operate handles several times from OFF to ON position. Do not force - handles turn only 90°.



## 5

### CARE:

**DO: SIMPLY RINSE THE PRODUCT CLEAN WITH CLEAR WATER. DRY WITH A SOFT COTTON FLANNEL CLOTH.**

**DO NOT: DO NOT CLEAN THE PRODUCT WITH SOAPS, ACID, POLISH, ABRASIVES, HARSH CLEANERS, OR A CLOTH WITH A COARSE SURFACE.**

*American Standard*

# PORTSMOUTH™ DUAL CONTROL HIGH-ARC KITCHEN FAUCET

MODEL NUMBER

**4285.551**

**M909610-YYY0A**  
INDEX BUTTON

**918555-0070A**  
HANDLE SCREW

**M909430-YYY0A**  
HANDLE ASSEMBLY

**918049-0070A**  
ADAPTER

**994053-0070A**  
VALVE

**M923057-0070A**  
PUTTY PLATE

**065800-0070A**  
ATTACHMENT NUT

**M964401-YYY0A**  
SPOUT KIT

**M910261-0070A**  
AERATOR  
**M911231-YYY0A**  
AERATOR RING

**SPOUT NUT NOT INCLUDED IN SPOUT KIT**

**A912621-0070A**  
O-RING

**M953056-0070A**  
DIVERTER

**M953668-YYY0A**  
HANDSPRAY & HOSE

**M953040-YYY0A**  
SPRAY HOLDER

Replace the YYY with  
Appropriate finish code

CHROME	002
STAINLESS STEEL	075
OIL RUBBED BRONZE	224



## HOT LINE FOR HELP

For toll-free information and answers to your questions, call:  
1-800-442-1902  
Weekdays 8:00 a.m. to 6:00 p.m. EST  
IN CANADA 1-800-387-0369 (TORONTO 1-905-306-1093)  
Weekdays 8:00 a.m. to 7:00 p.m. EST  
IN MEXICO 01-800-839-1200

Product names listed herein are trademarks of American Standard Inc.  
© AS America, Inc. 2013

M965459 Rev. 1.1