

INSTALLATION INSTRUCTIONS

Percy™ Pressure Balanced Tub/Shower Diverter Valve Trim Kit

Cross Handle

Model D35105640

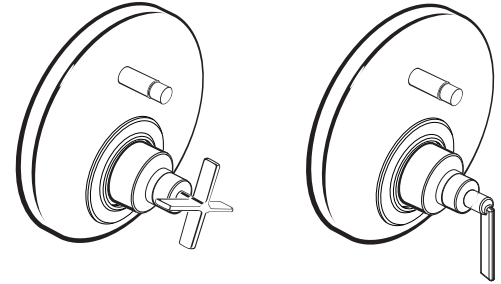
Cylinder Handle

Model D35105600

To be used with D35000600.191

Rough Valve for Pressure Balanced Bath/Shower

Thank you for selecting DXV by American Standard. To ensure that your installation proceeds smoothly, please read these instructions carefully before you begin.



RECOMMENDED TOOLS AND MATERIALS

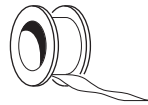
Most of the procedures require the use of common tools and materials, which are available from hardware and plumbing, supply stores. It is essential that the tools and materials be on hand before work is begun.



Adjustable Wrench



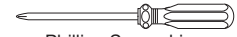
Channel Locks



Teflon Tape



Hex Wrench
(Supplied)



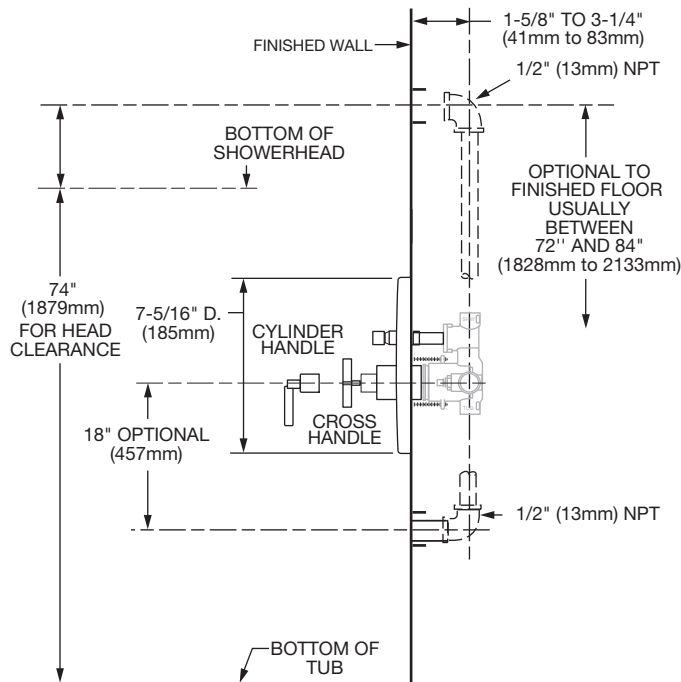
Phillips Screwdriver



Regular Screwdriver

ROUGHING-IN DIMENSIONS:

- For reference



In the United States:

DXV by American Standard
One Centennial Avenue
Piscataway, New Jersey 08855
Attention: Director of Customer Care

For residents of the United States, warranty information may also be obtained by calling the following toll free number: (800) 227-2734
www.DXV.com

In Canada:

DXV by American Standard
5900 Avebury Road
Mississauga, Ontario
L5R 3M3
Canada

Toll Free: 1-800-387-0369
Local: 905-306-1093
Fax: 1-800-395-1498
www.DXV.ca

In Mexico:

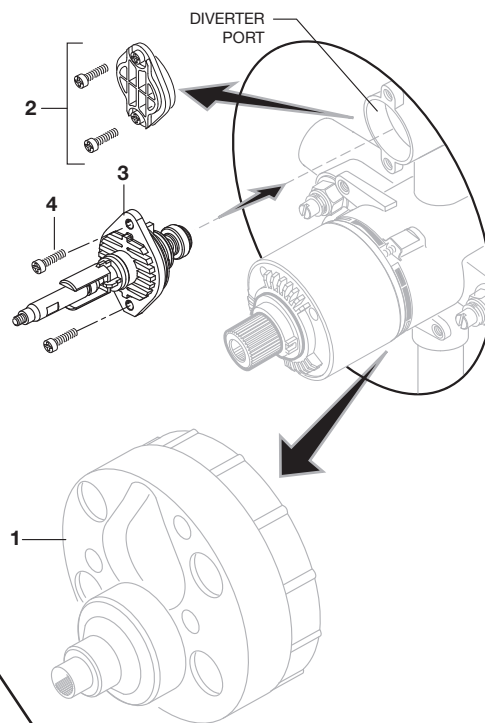
DXV by American Standard
Via Morelos 330
Col. Santa Clara Coatitla
Ecatepec, Estado de México 55540

Toll Free: 01-800-8391200
www.DXV.mx

USE
FOR
FUTURE
SAVE

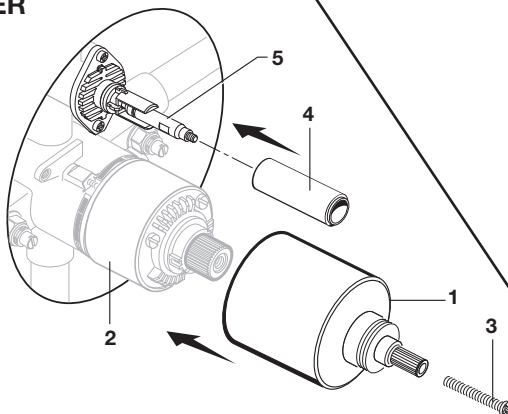
1 INSTALL DIVERTER **CAUTION** Turn off water at main supply.

- When finished tiling the wall, remove PLASTER GUARD (1). Remove two screws that secure the DIVERTER LID (2) and remove Lid. Inspect the inside surface of diverter port. Diverter port must be free of any dirt. Clean if necessary.
- Install DIVERTER (3) with SCREWS (4) removed from DIVERTER LID (2).
- Operate DIVERTER (3). DIVERTER (3) should slide in and out smoothly.



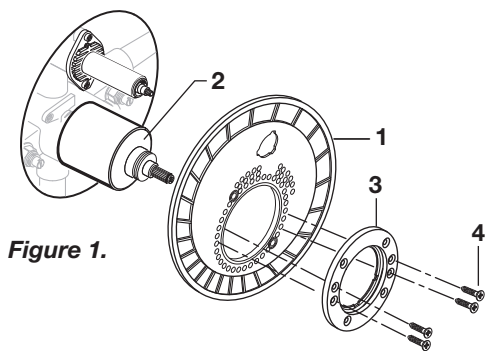
2 INSTALL DIVERTER COVER AND VALVE COVER

- Push HANDLE BASE (1) over VALVE CARTRIDGE (2) until seated against stop. Install MOUNTING SCREW (3) and tighten.
- Push DIVERTER CAP (4) over DIVERTER (5) until seated against stop.



3 INSTALL TRIM

- **Figure 1.** Push ESCUTCHEON HOLDER (1) with gasket onto HANDLE BASE (2) tight against finished wall. Mount ESCUTCHEON SUPPORT (3) to ESCUTCHEON HOLDER (1) with SCREWS (4).



- **Figure 2.** Push ESCUTCHEON (5) onto HANDLE BASE (2) tight against finished wall. Install the two MOUNTING SCREWS (6) and tighten.

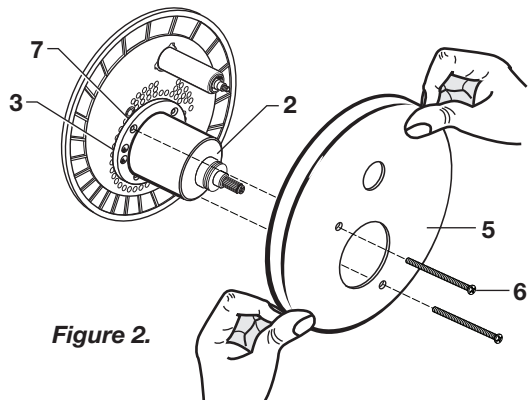
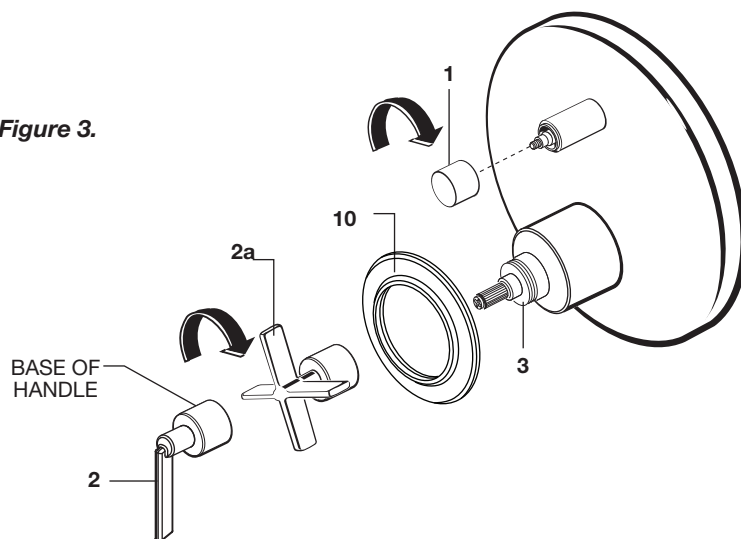


Figure 3.

- Thread DIVERTER KNOB (1) onto diverter stem.
- Align TRIM RING (10) and push onto HANDLE BASE (3).
- Align HANDLE (2, 2a) and thread the base of the handle onto the HANDLE BASE (3).

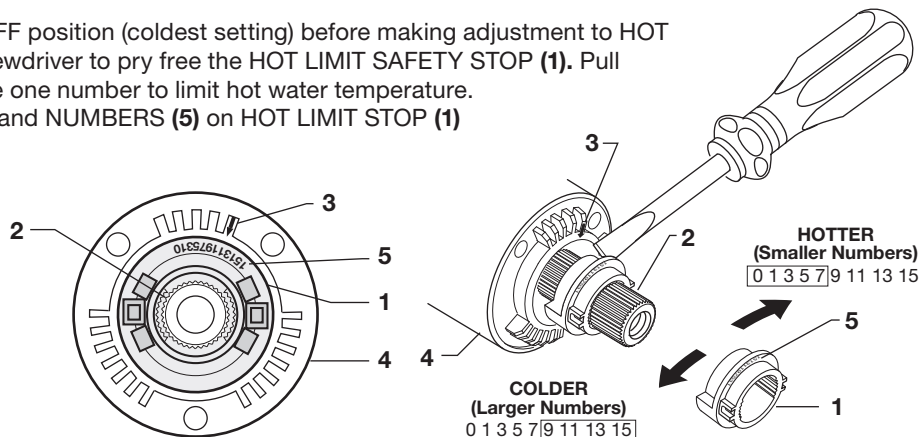
Figure 3.



4 ADJUST HOT LIMIT STOP (MUST BE DONE PRIOR TO TRIM INSTALLATION)

By restricting **HANDLE** rotation and limiting the amount of hot water allowed to mix with the cold, the **HOT LIMIT SAFETY STOP (1)** reduces risk of accidental scalding. To set the maximum hot water temperature of your faucet, all you need to do is adjust the setting on the **HOT LIMIT SAFETY STOP (1)**.

- Turn **CARTRIDGE STEM (2)** to the OFF position (coldest setting) before making adjustment to **HOT LIMIT STOP (1)**. Use a flat blade screwdriver to pry free the **HOT LIMIT SAFETY STOP (1)**. Pull forward and rotate counterclockwise one number to limit hot water temperature. Use **ARROW (3)** on **CARTRIDGE (4)** and **NUMBERS (5)** on **HOT LIMIT STOP (1)** for indication.



5 BACK TO BACK INSTALLATION (SEE ILLUSTRATION STEP 7 FOR REFERENCE)

- Remove Handle and Trim from Valve. See step 3 for reference.
- Remove **PRESSURE BALANCE UNIT (5)**. Rotate **PRESSURE BALANCE UNIT (5)** 180° so that the inlets face up and the large outlet port faces down.
- Push **PRESSURE BALANCE UNIT (5)** in casting make sure inlets line up with holes in bottom of casting. Top flange should butt up against top of casting.
- Reassemble **FIXATION RING (4)** and **CARTRIDGE (1)**.

6 TEST INSTALLED FAUCET

- Turn **VALVE "off"**.
- With **HANDLE** in "off" position, turn on water supplies and check all connections for leaks.
- Operate **HANDLE** and flush water lines thoroughly. Pull **DIVERTER** and check **SHOWER** for proper operation.
- Check **SPOUT** and **SHOWER** connections for leaks.

7 TO GAIN ACCESS TO VALVE FOR SERVICING

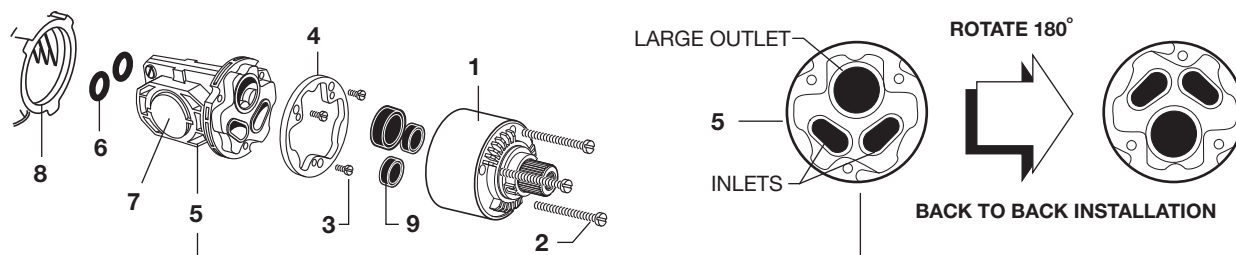
- Remove Handle and Trim from Valve. See step 3 for reference.
- Shut off water supply by either closing off main water supply, or closing off the hot and cold **CHECK STOPS** on valve, if present.

VALVE LEAKS WHEN SHUT OFF

- Remove **CARTRIDGE (1)** by removing **CARTRIDGE SCREWS (2)**. Remove three **SCREWS (3)** from **FIXATION RING (4)** and pull out **PRESSURE BALANCING (5)** unit.
- Clean **SEALS (9)** on base of **CARTRIDGE (1)**. Check base of **PRESSURE BALANCING UNIT (5)** and clean **O-RINGS (6)**. Remove **CAPS (7)** and check **O-RINGS** on inside of **CAPS (7)**. Clean inside sealing surfaces of **VALVE BODY (8)**.
- Re-assemble **PRESSURE BALANCING UNIT (5)** and **CARTRIDGE (1)**. Tighten all screws. Turn on water supply and see above for installing **TRIM** and **HANDLE**.

UNABLE TO MAINTAIN CONSTANT TEMPERATURE

- Remove **PRESSURE BALANCE UNIT (5)**. Remove **CAPS (7)** and clean valve thoroughly.
- Examine balancing unit and check condition of O-ring on end of piston. Piston should move back and forth. Order Repair Part M952100-0070 if balancing unit is defective.
- Replace **CAPS (7)** and install **PRESSURE BALANCE UNIT (5)**. Make sure inlets line up with two holes in bottom of casting. Top flange should butt-up against top of casting.





AMERICAN STANDARD

Percy™ Pressure Balanced Tub/Shower Diverter Valve Trim Kit

MODEL NUMBERS

Cross Handle
D35105640

Cylinder Handle
D35105600

Replace the "YYY" or "XXX" with
appropriate finish code

| | |
|-----------------|-----|
| POLISHED CHROME | 100 |
| BRUSHED NICKEL | 144 |

