

**DECORUM® WALL-HUNG LAVATORY
WITH EVERCLEAN®**

- 20" x 18" vitreous china lavatory with EverClean included
- Available with rear overflow or less overflow
- Recessed self-draining deck with minimal backsplash
- For concealed arm or wall support (wall hanger included)
- ADA and TAS compliant
- Shown with Serin faucets (sold separately)
- Shown with drain grid (sold separately)

- ☐ **9024.000EC** No faucet holes
- ☐ **9024.001EC** Center hole only (CHO)
- ☐ **9024.021EC** CHO with left hand soap dispenser
- ☐ **9024.011EC** CHO with right hand soap dispenser
- ☐ **9024.901EC** CHO less overflow
- ☐ **9024.921EC** CHO with left hand soap dispenser less overflow
- ☐ **9024.911EC** CHO with right hand soap dispenser less overflow
- ☐ **9024.004EC** 4" centers
- ☐ **9024.024EC** 4" centers with left hand soap dispenser
- ☐ **9024.014EC** 4" centers with right hand soap dispenser
- ☐ **9024.904EC** 4" centers less overflow
- ☐ **9024.924EC** 4" centers with left hand soap dispenser less overflow
- ☐ **9024.914EC** 4" centers with right hand soap dispenser less overflow
- ☐ **9024.008EC** 8" centers
- ☐ **9024.908EC** 8" centers less overflow

Nominal Dimensions:

464mm (18-1/4") deep, 508mm (20") wide

Bowl sizes:

354mm (13-15/16") wide, 325mm (12-13/16") front to back, 127mm (5") deep

To Be Specified:

- ☐ Color: ☐ White
- ☐ Faucet*:
- ☐ Faucet Finish:
- ☐ Supplies:
- ☐ 1-1/4" Trap:
- ☐ Suggested carriers include Jay R. Smith models 0801 and 0700

* See faucet section for additional models available

**Compliance Certifications -
Meets or Exceeds the Following Specifications:**

- ASME A112.19.2 for Vitreous China Fixtures



9024.001EC shown with 2064 Series Serin Faucet

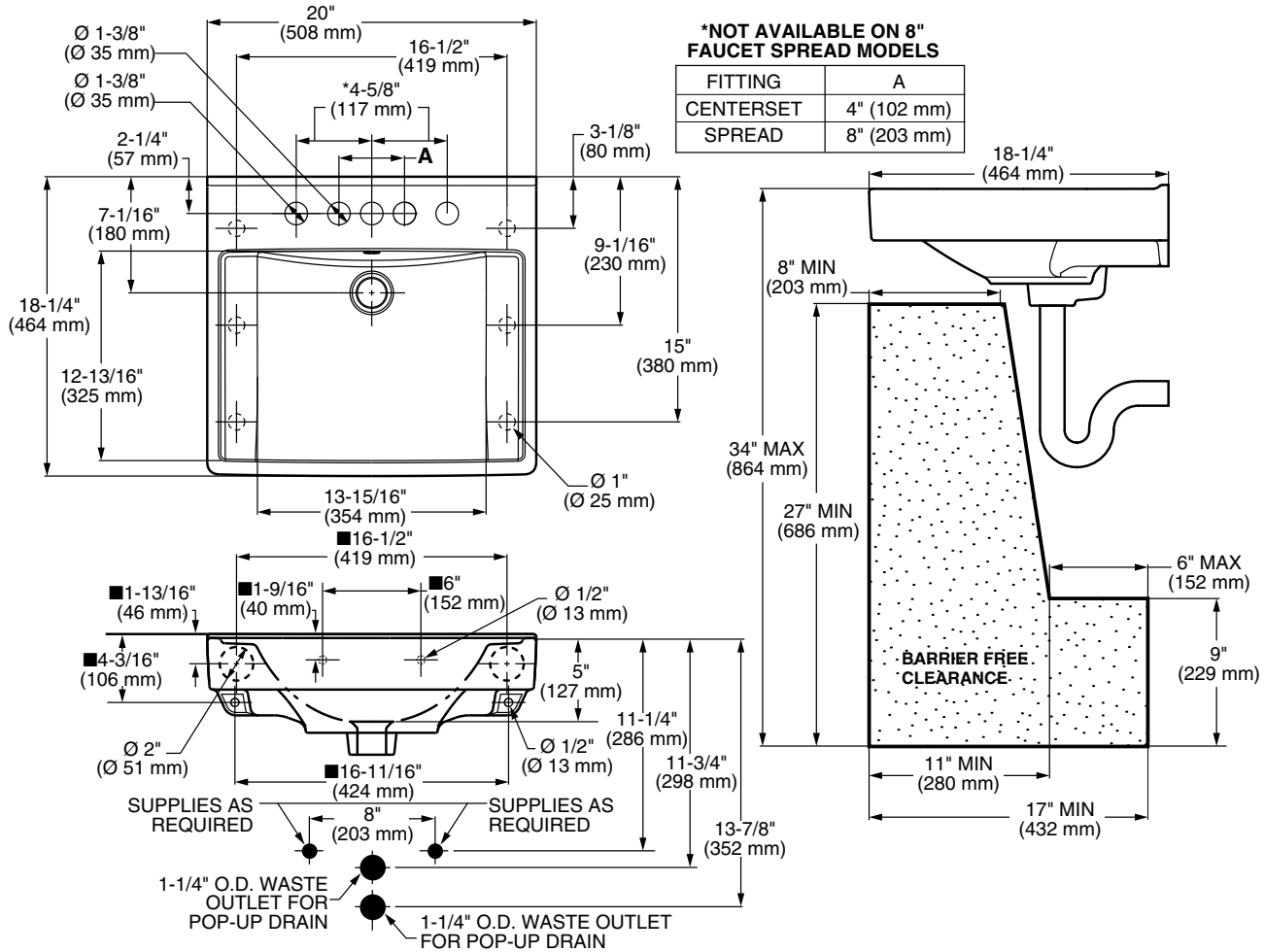


9024.000EC shown with R350 & T064 Series Serin Faucet

SEE NEXT PAGE FOR ROUGHING-IN DIMENSIONS



MEETS THE AMERICANS WITH DISABILITIES ACT GUIDE-
LINES AND ANSI A117.1 ACCESSIBLE AND USABLE
BUILDINGS AND FACILITIES - CHECK LOCAL CODES.
Top of front rim mounted 864mm (34") from finished floor.



NOTES:

● LOOSE KEY ANGLE STOPS, LESS WALL ESCUTCHEONS. SUPPLIES REQUIRED.
DIMENSIONS SHOWN FOR LOCATION OF SUPPLIES AND "P" TRAP ARE SUGGESTED.
■ SUITABLE FOR REINFORCEMENT ONLY, ACTUAL DIMENSIONS MUST BE TAKEN FROM FIXTURE.
FITTINGS NOT INCLUDED AND MUST BE ORDERED SEPARATELY.
PROVIDE SUITABLE REINFORCEMENT FOR ALL WALL SUPPORTS.
INSTALLATION INSTRUCTIONS SUPPLIED WITH LAVATORY.

IMPORTANT: Dimensions of fixtures are nominal and may vary within the range of tolerances established by ANSI Standard A112.19.2. These measurements are subject to change or cancellation. No responsibility is assumed for use of superseded or voided pages.



Model 9024.000EC
No Faucet Holes



Model 9024.001EC
Center Hole Only (CHO)



Model 9024.004EC
4" Centers



Model 9024.008EC
8" Centers



Model 9024.011EC
CHO With Right Hand Soap Dispenser



Model 9024.014EC
4" Centers With Right Hand Soap Dispenser



Model 9024.021EC
CHO With Left Hand Soap Dispenser



Model 9024.024EC
4" Centers With Left Hand Soap Dispenser



Model 9024.901EC
CHO Less Overflow



Model 9024.904EC
4" Centers Less Overflow



Model 9024.908EC
8" Centers Less Overflow



Model 9024.911EC
CHO With Right Hand Soap Dispenser
Less Overflow



Model 9024.914EC
4" Centers With Right Hand Soap Dispenser
Less Overflow



Model 9024.921EC
CHO With Left Hand Soap Dispenser
Less Overflow



Model 9024.924EC
4" Centers With Left Hand Soap Dispenser
Less Overflow