

T431 502 Bath/Shower Trim Shown

GENERAL DESCRIPTION:

TRIM KIT

All brass 6-3/4" rain showerhead. IPS diverter spout.
Available with metal lever handle.
Showerhead: 2.15/9.5L/min. max. flow rate.

ROUGH VALVE BODY

Cast brass body, washerless ceramic disc valve cartridge with back to back capability, and hot limit safety stop. Cycles from "off" to "cold" to "hot." Pressure balancing cartridge maintains constant output temperature in response to changes in relative hot and cold supply pressure. 1/2" inlets and outlets (choice of direct sweat, threaded, or PEX). Available with screwdriver stops. Rough-in plaster guard designed for use as thin-wall mounting adaptor.

MODEL NUMBER:

TRIM KITS:

- ☐ **T431 502 Boulevard BATH/SHOWER Trim Kit**
Metal Lever Handle. LESS Valve Body.
- ☐ **T431 501 Boulevard BATH/SHOWER Trim Kit**
Metal Lever Handle. LESS Valve Body.
- ☐ **T431 500 Boulevard VALVE ONLY Trim Kit**
Metal Lever Handle. LESS Valve Body.

ROUGH VALVES:

- ☐ **R110 Pressure Balance Rough Valve Body only**
Direct sweat inlets/outlets. LESS trim.
- ☐ **R110SS Pressure Balance Rough Valve Body only with Screwdriver stops**
Direct sweat inlets/outlets. Screwdriver stops. LESS trim.
- ☐ **R115 Pressure Balance Rough Valve Body only**
Female thread inlets/outlets. LESS trim.
- ☐ **R115SS Pressure Balance Rough Valve Body only with Screwdriver stops**
Female thread inlets/outlets. Screwdriver stops. LESS trim.
- ☐ **R117 Pressure Balance Rough Valve Body only**
PEX inlets/Direct sweat outlets. LESS trim.
- ☐ **R117SS Pressure Balance Rough Valve Body only with Screwdriver stops**
PEX inlets/Direct sweat outlets. Screwdriver stops. LESS trim.

PRODUCT FEATURES:

Rough Valve Body: Durable quality that will last a lifetime. Ideal material for prolonged contact with water.

Ceramic Disc Valve Cartridge: Assures a lifetime of drip-free performance. Allows easy control over both water temperature and volume.

Pressure Balancing Valve Cartridge: Maintains constant output temperature in response to changes in relative hot and cold supply pressure. Diaphragm system engineered to eliminate cross flow. Avoids failure due to mineral deposits - ideal for use in hard water.

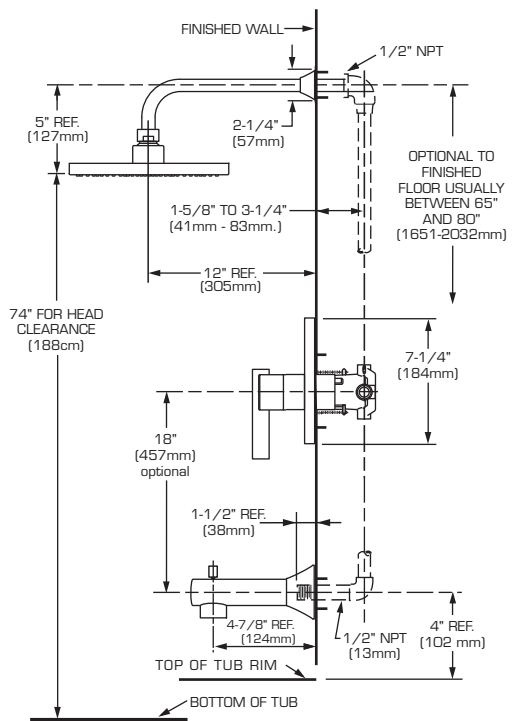
Adjustable Hot Limit Safety Stop: Limits the amount of hot water allowed to mix with cold. Reduces the risk of accidental scalding.

Exclusive Plaster Guard: Plaster guard is designed to protect valve during installation and serve as a mounting plate for thin-wall installations. Two piece design allows valve to be tested prior to trim installation.

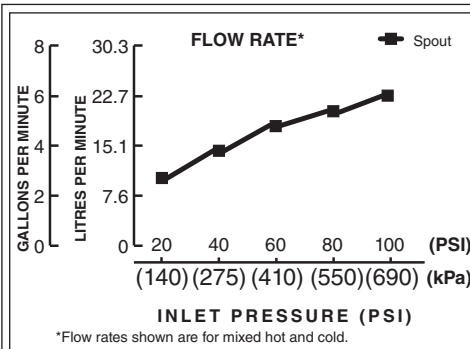
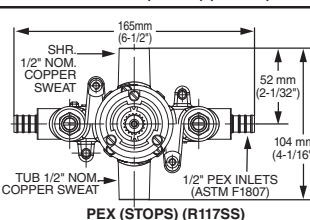
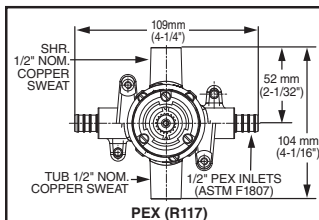
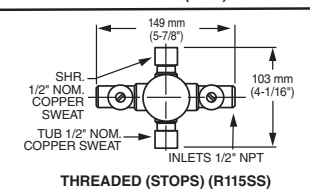
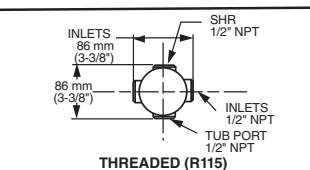
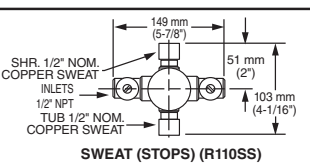
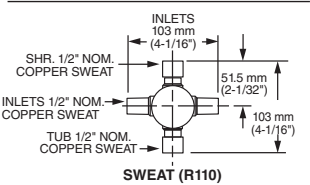
Wide Rough-in Range: From 1-5/8" to 3-1/4".

Showerhead: Brass construction: durable quality that will last a lifetime.

Limited Lifetime Warranty.



VALVE BODY OPTIONS



CODES AND STANDARDS

These products meet or exceed the following codes and standards:

ANSI A 117.1
ASSE 1016
ASME A112.18.1
IAPMO (cUPC)

• Showerhead with 1.5gpm/5.7L.min. flow restrictor.

TRIM KITS *	Product Number	Description		Finish Options	
				Polished Chrome	PVD Satin Nickel
				002	295
	T431 502	Bath/Shower Trim Kit. Metal Lever Handle. FloWise Showerhead. LESS Valve Body.			
	T431 501	Shower Only Trim Kit. Metal Lever Handle. FloWise Showerhead. LESS Valve Body.			
	T431 500	Valve Trim Only . Metal Lever Handle. LESS Valve Body.			

ROUGH VALVE BODIES	Product Number	Description
	R110	Rough Valve Body less trim. Direct Sweat inlets/outlets.
	R110SS	Rough Valve Body less trim. Direct Sweat inlets/outlets with Screwdriver Stops.
	R115	Rough Valve Body less trim. Female Thread inlets/outlets.
	R115SS	Rough Valve Body less trim. Female Thread inlets/outlets with Screwdriver Stops.
	R117	Rough Valve Body less trim. PEX inlets/ Direct Sweat outlets.
	R117SS	Rough Valve Body less trim. PEX inlets/ Direct Sweat outlets with Screwdriver Stops.

* TRIM & ROUGH MUST BE ORDERED SEPARATELY.