

Raindance Select E Showerpipe 300 with Select Shower Controls, 2.0 GPM

Finishes : **chrome** Part no. : **27126001**

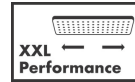


Description

Features

- Consists of: Showerhead, Handshower, Handshower holder, Handshower hose, Thermostatic shower mixer, Wallbar
- spray type overhead shower: Rain, RainAir
- Spray modes hand shower: RainAir, Rain, Whirl
- Shelf: shelf made of safety glass
- Shelf color: chrome or white
- Flow: 2.0 GPM (7.6 L/Min)
- Anti-scald 100° safety stop
- Select push-button for on/off control
- Outlets may be operated simultaneously (maximum combined flow of 2.0 GPM)
- Exposed installation
- Thermostatic cartridge

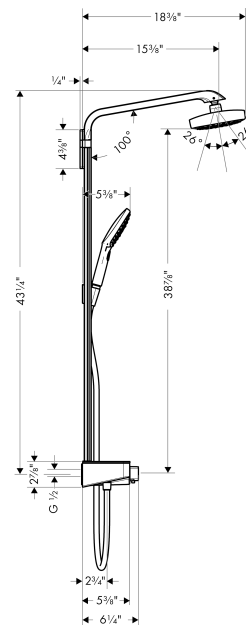
Technology



Product image



Scale drawing

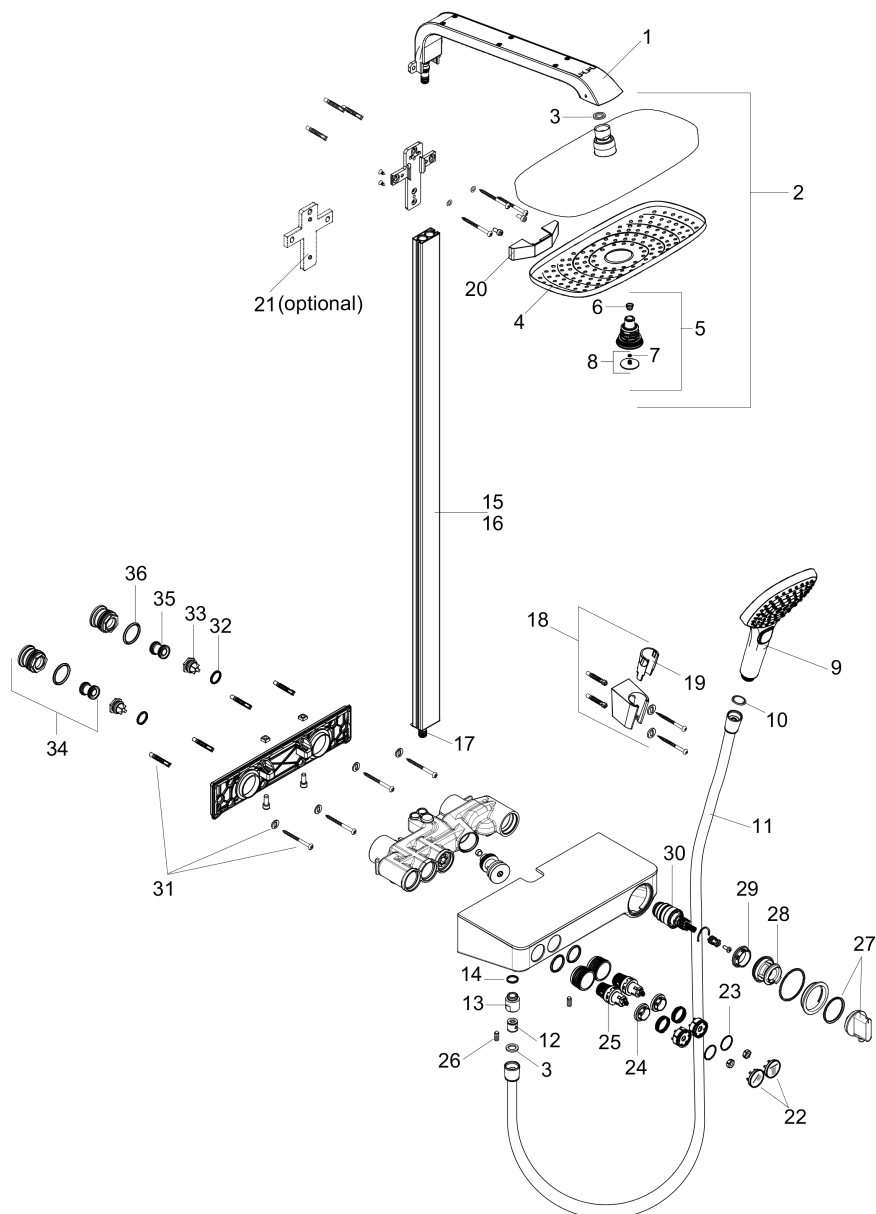


Raindance Select E
Showerpipe 300 with Select Shower Controls, 2.0 GPM
 Finishes : **chrome** Part no. : **27126001**



Exploded drawing

Year of production: >10/16



Raindance Select E
Showerpipe 300 with Select Shower Controls, 2.0 GPM
 Finishes : **chrome** Part no. : **27126001**



Spare parts list

Year of production: >10/16

Pos.	Description	Part no.	PC	PU
1	shower arm	92144000	0	1
2	seal	98058000	0	1
3	Overhead shower with female thread G½	04534000	0	1
4	spray body	92126000	0	1
5	selector assy	98343000	0	1
6	filter	97735000	0	1
7	O-ring 3x1	98384000	0	1
8	cover	98344000	0	1
9	handshower	04528000	0	1
10	filter packing	94246000	0	1
11	shower hose 1,60 m	28276003	0	1
12	set of non return valves DW 15	94074000	0	1
13	Hose Connection	96044000	0	1
14	O-ring 14x2	98129000	0	1
15	pipe with cover (900 mm)	92141000	0	1
16	pipe with cover (1000 mm)	92467000	0	1
17	O-ring 9x1,5	98117000	0	1
18	shower holder	28331000	0	1
19	guide	98918000	0	1
20	cover	92142000	0	1
21	tile-matching-disk	92143000	0	1
22	set of symbols	98367000	0	1
23	O-ring 20x1	98140000	0	1
24	nut	98368000	0	1
25	shut off unit	95758000	0	1
26	hollow set screw M6x16 including o-ring 29x3	98372000	0	1
27	handle for thermostat	98369000	0	1
28	safety set	98370000	0	1
29	nut	98913000	0	1
30	thermostat cartridge	98282000	0	1
31	mounting set	96179000	0	1
32	O-ring 17x2	98199000	0	1
33	non return valve (pressure-resistant up to 2 MPa)	95773000	0	1
34	set of S-unions	95772001	0	1
35	noise reduction	96429000	0	1
36	O-ring 29x3	98371000	0	1