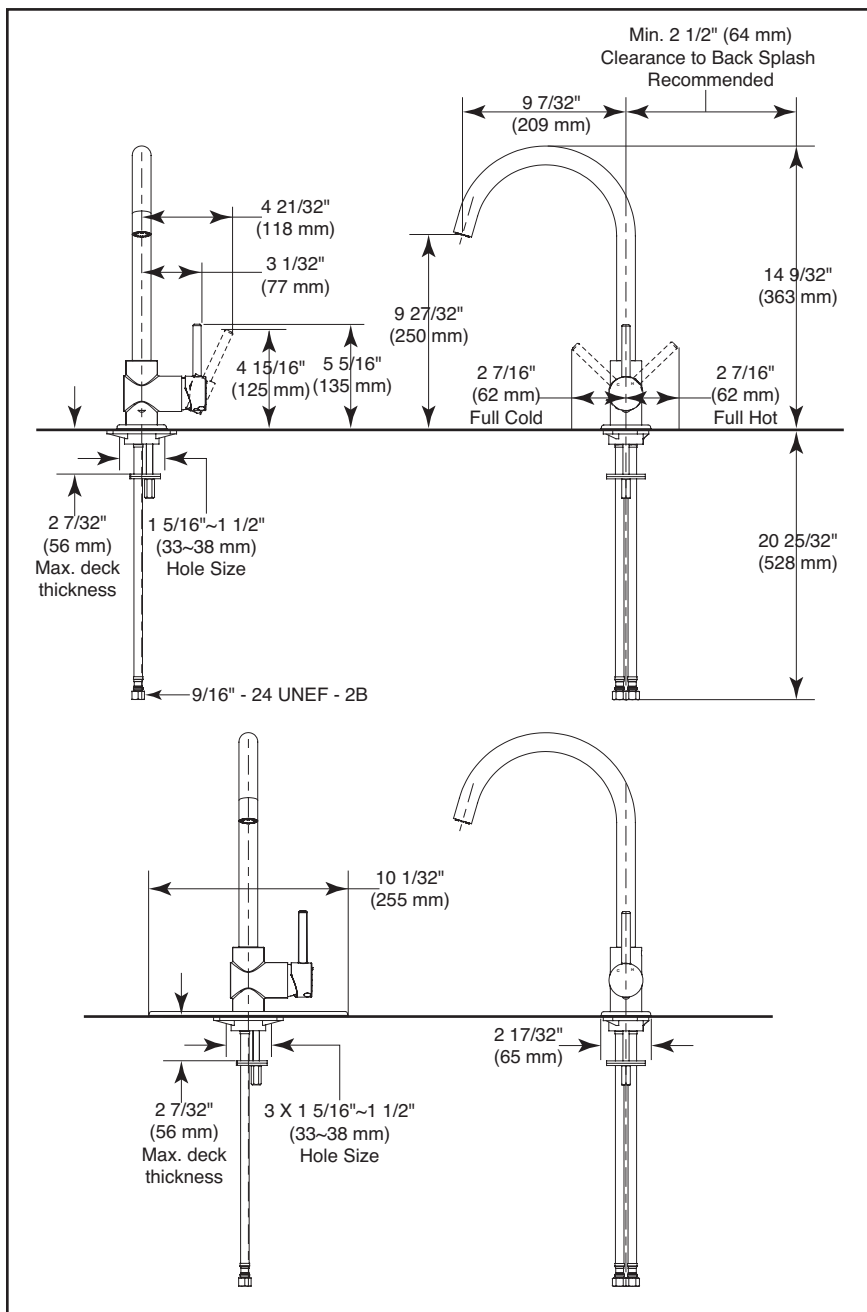


Submitted Model No.: _____

Specific Features: _____



▲ Designate proper finish suffix

Delta reserves the right (1) to make changes in specifications and materials, and (2) to change or discontinue models, both without notice or obligation. Dimensions are for reference only. See current full-line price book or www.specselect.com for finish options and product availability.

DSP-K-191LF



KITCHEN FAUCETS

- Tommy Collection
- Single Handle Deck Mount
- 1 or 3 Hole Sink Applications

STANDARD SPECIFICATIONS:

- Solid brass fabricated body.
- Single handle kitchen faucet for exposed mounting on 1 or 3 hole sinks.
- 8" centres with optional 10" long escutcheon.
- 14 9/32" (363 mm) high, 9 7/32" (209 mm) long spout nestled in a metal hub, swings 120°.
- Ceramic cartridge with high temperature rotational limit stop.
- ADA compliant.
- Maximum flow rate: 2.2 gpm @ 60 psi, 8.3 L/min @ 414 kPa.

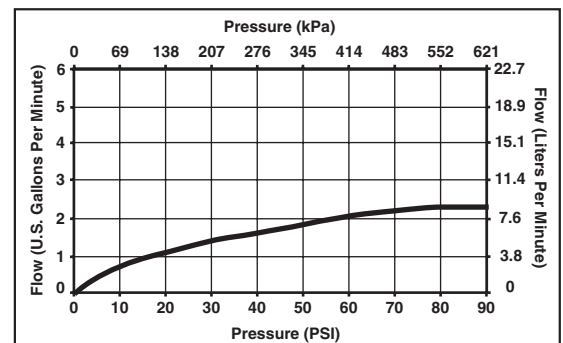
WARRANTY

- Lifetime Faucet and Finish Limited Warranty to the original consumer purchaser to be free from defects in material and workmanship.
- 5 Year Limited Warranty for usage in all industrial, commercial and business applications.



COMPLIES WITH:

- ASME A12.18.1 / CSA B125.1
- Indicates ADA compliance to ICC/ANSI A117
- Verified compliant with 0.25% weighted average Pb content regulations.



55 E. 111th Street, Indianapolis, Indiana 46280
350 South Edgeware Road, St. Thomas, ON N5P 4L1
© 2014 Masco Corporation of Indiana