



STUDIO FloWise® CONCEALED TRAPWAY RIGHT HEIGHT™ ELONGATED TOILET

2794 104

- Vitreous china
- Meets definition for HET (High Efficiency Toilet)
- High efficiency (4.8 Lpf/1.07 gpf)
- Meets EPA WaterSense® criteria (Pending)
- 12" (305mm) rough-in
- 16-1/2" (419mm) rim height for accessible applications
- EverClean® surface inhibits the growth of stain and odor-causing bacteria, mold, and mildew on the surface
- Features the **Cadet® 3 Flushing System**
- Elongated siphon action jetted bowl with smooth-sided, concealed trapway
- Generous 9" x 8" (229x203mm) water surface area
- PowerWash™ rim scrubs bowl with pressurized water every flush
- Oversized 3" (76mm) Flush Valve
- Design matched chrome metal trip lever
- Includes top mounting Duroplast Slow-Close seat and cover, with easy lift-off feature for simple removal and attachment for cleaning, packed with bowl. Telescoping cover conceals seat ring when closed
- 2 colour-matched bolt hole covers
- 100% factory flush tested
- Lifetime warranty on chinaware, 5 year warranty on all mechanical parts, and 1 year warranty on seat
- **Design coordinated with Studio and Boulevard sinks**

Separate Component Parts:

-  **3075 100** Right Height™ Elongated Bowl with Seat
-  **4000 104** Unlined Tank

Nominal Dimensions:

768 x 400 x 781mm
(30-1/4" x 15-3/4" x 30-3/4")




Fixture and toilet seat only, supply by others

Compliance Certifications -

Meets or Exceeds the Following Specifications:

- ASME A112.19.2-2008/CSA B45.1-08 for Vitreous China Fixtures
- US EPA WaterSense® Specification for HET's

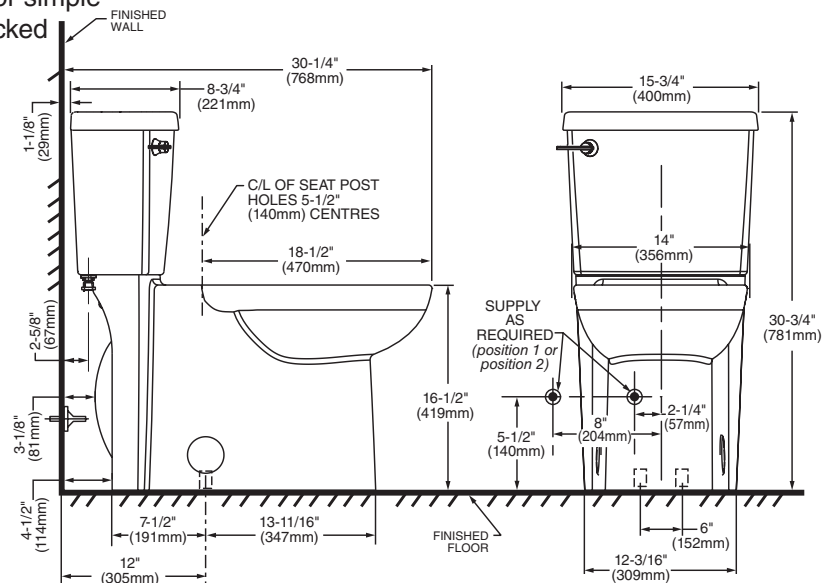
To Be Specified

-  Colour: 
-  Supply with stop:



- When installed so top of seat is 432 to 483mm (17" to 19") from the finished floor.

MEETS THE AMERICAN DISABILITIES ACT GUIDELINES AND ANSI A117.1 REQUIREMENTS FOR ACCESSIBLE AND USEABLE BUILDING FACILITIES-CHECK LOCAL CODES.



IMPORTANT: Water supply on the wall is required at 2-1/4" (57mm) or 8" (204mm) from centreline of the toilet (see rough-in). First suggested position is hidden behind the toilet. The geometry of the toilet gives space for this installation. The second suggested position is next to the toilet. Between these two positions, the space for the supply between wall and toilet is limited to 4-1/2" (114mm). In this case, check your supply and hose dimensions.

NOTES:

THIS TOILET IS DESIGNED TO ROUGH-IN AT A MINIMUM DIMENSION OF 305MM (12") FROM FINISHED WALL TO C/L OF OUTLET.

SUPPLY NOT INCLUDED WITH FIXTURE AND MUST BE ORDERED SEPARATELY.

* DIMENSION SHOWN FOR LOCATION OF SUPPLY IS SUGGESTED.

IMPORTANT: Dimensions of fixtures are nominal and may vary within the range of tolerance established by ANSI Standard A112.19.2

These measurements are subject to change or cancellation. No responsibility is assumed for use of superseded or voided pages.



CADET® 3
Flushing System