

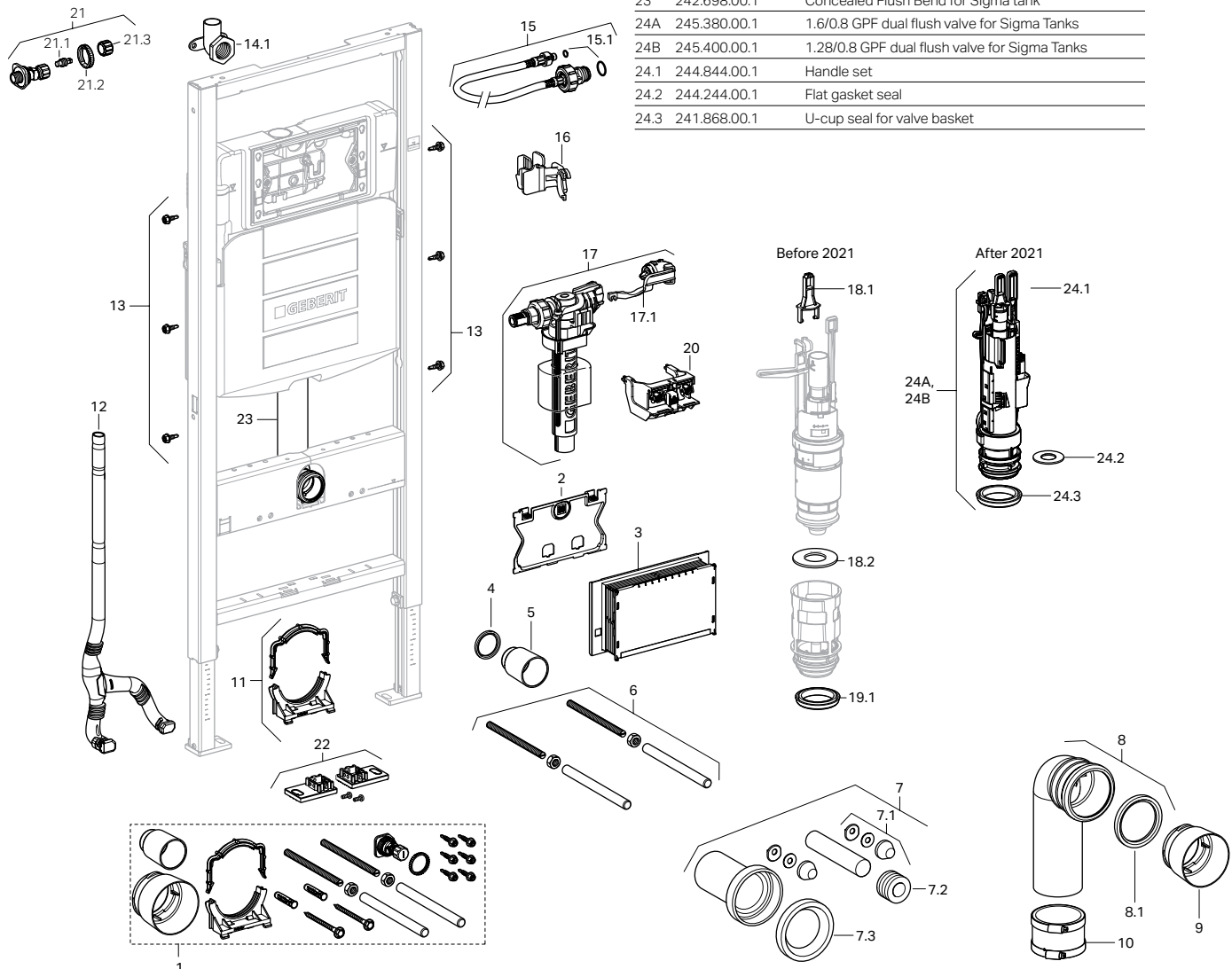
GEBERIT INSTALLATION SYSTEMS

Replacement Parts

Geberit Duofix Carrier 111.335.00.5 and 111.902.00.5, Sigma 2x6 Installation

| Item | Model No. | Description |
|------|------------------------------|---|
| 1 | 242.314.00.1 | Materials for Concealed Carrier and Tank installation |
| 2 | 242.315.00.1 | Splash guard protection cover for Sigma Concealed Tank |
| 3 | 243.345.00.1 or 243.168.00.1 | Mud guard protection housing for Sigma Concealed Tanks 2x6 and 2x4, plastic |
| 4 | 362.771.00.1 | Seal for concealed flush pipe, EPDM |
| 5 | 362.796.92.1 | Protection plug, plastic |
| 6 | 240.189.00.1 | Threaded rod for wall-mounted toilet or bidet installation |
| 7 | 152.404.46.1 | Connector set with mounting hardware (bowl installation kit), HDPE; Matte Chrome cover caps |
| 7 | 152.404.11.1 | Connector set with mounting hardware (bowl installation kit), HDPE; Matte White cover caps (accessory only) |
| 7.1 | 217.713.46.1 | Cover caps with leveling washer, plastic, Matte Chrome |
| 7.2 | 119.668.00.1 | Seal for supply inlet tube, EPDM |
| 7.3 | 152.424.00.1 | Seal for toilet outlet connector, EPDM |
| 8 | 366.061.16.1 | HDPE waste fitting outlet bend, 1 x 90° bend with socket for Ø3.50" (Ø90 mm) push fit piping and Ø3.50" (Ø90 mm) outlet |
| 8.1 | 387.282.00.1 | Seal for outlet bends, EPDM |
| 9 | 366.820.92.1 | Protection plug, plastic |
| 10 | — | Flexible coupling FERNCO 3005-33 |
| 11 | 242.012.00.1 | Outlet pipe bracket (complete) |

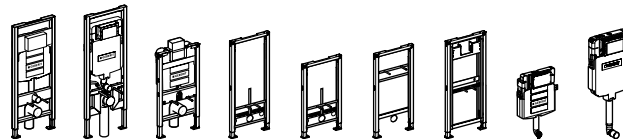
| Item | Model No. | Description |
|------|--------------|--|
| 12 | 242.886.00.1 | Conduit pipe for shower toilet water supply with Sigma Concealed Tank 2x6, Omega Concealed Tank or Kappa Concealed Tank (from 2013 on) |
| 13 | 111.892.00.1 | Frame mounting screws for steel stud construction, galvanized, self-tapping |
| 14 | 240.853.00.1 | Supply angle stop (black handle) |
| 14.1 | 240.851.00.1 | Drop ear elbow, copper |
| 15 | 240.921.00.1 | Connection hose for Sigma Concealed Tank, 3/8" |
| 15.1 | 240.922.00.1 | Set of seals for RFB hose |
| 16 | 240.923.00.1 | Fixation clip for filling valve |
| 17 | 241.469.00.1 | Filling valve Type 380 for Sigma, Omega and Kappa Concealed Tanks |
| 17.1 | 240.771.00.1 | Seal kit for filling valve Type 380 |
| 18.1 | 241.167.00.1 | Yoke set for flush valves |
| 18.2 | 816.418.00.1 | Geberit flat gasket for flush valve |
| 19.1 | 241.868.00.1 | U-cup seal for valve basket |
| 20 | 241.829.00.1 | Flush actuator gear box |
| 21 | 240.269.00.1 | Angle stop valve to concealed tank (blue handle) |
| 21.1 | 240.298.00.1 | Spindle to angle stop valve |
| 21.2 | 241.857.00.1 | Counter nut, plastic |
| 21.3 | 240.347.00.1 | Handle for angle stop valve (blue) |
| 22 | 244.125.00.1 | Foot plate set |
| 23 | 242.698.00.1 | Concealed Flush Bend for Sigma tank |
| 24A | 245.380.00.1 | 1.6/0.8 GPF dual flush valve for Sigma Tanks |
| 24B | 245.400.00.1 | 1.28/0.8 GPF dual flush valve for Sigma Tanks |
| 24.1 | 244.844.00.1 | Handle set |
| 24.2 | 244.244.00.1 | Flat gasket seal |
| 24.3 | 241.868.00.1 | U-cup seal for valve basket |



The information contained in this document is subject to change without notice.

GEBERIT SYSTEM ACCESSORIES

Geberit Optional and Required Accessories for Installation



| Description | Model Number | List Price \$ | 111.335 | 111.798 | 111.012 | 111.520 | 111.524 | 111.490 | 111.625 | 109.304 | | 109.307 | 109.797 |
|-------------|--------------|---------------|---------|---------|---------|---------|---------|---------|---------|---------|--|---------|---------|
| | | | 111.902 | 111.597 | 111.018 | | | | | | | | |

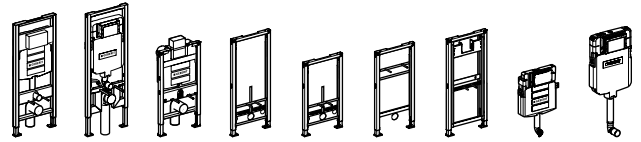
OPTIONAL Connection Sets and Accessories for Finished Walls up to 3.5" (9cm) Thick


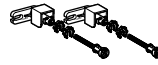
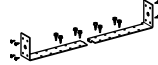

| | | | | | | | | | | | | | |
|--|--|--------------|--|---|---|---|---|---|---|---|--|---|---|
| | PE syphon trap with horizontal outlet and seal; Ø1.96" (Ø50 mm) outlet | 152.950.11.1 | | | | | | | | ✓ | | | |
| | PE syphon trap with vertical outlet and seal; Ø1.97" (Ø50 mm) outlet | 152.951.11.1 | | | | | | | | ✓ | | | |
| | Acoustic insulation set for wall-hung toilets and bidets | 156.050.00.1 | | ✓ | ✓ | ✓ | ✓ | ✓ | | | | | |
| | Cover caps with leveling washer, plastic, Alpine White | 217.713.11.1 | | ✓ | ✓ | ✓ | ✓ | ✓ | ✓ | | | | |
| | HDPE connection set with 1" (2.5 cm) offset and mounting hardware (bowl installation kit); with socket for Ø3.50" (Ø90 mm) push fit piping and Ø55 supply inlet; Matte Chrome cover caps | 405.116.00.1 | | ✓ | ✓ | ✓ | | | | | | ✓ | ✓ |

REQUIRED Connection Sets and Accessories for Finished Walls 3.5" - 7.0" (9-18cm) Thick

| | | | | | | | | | | | | | |
|--|---|--------------|---|---|---|---|---|---|---|---|--|---|---|
| | HDPE Connector set for extended installation and mounting hardware (bowl installation kit), with socket for Ø3.50" (Ø90 mm) push fit piping and Ø2.16" (Ø55 mm) supply inlet; Matte Chrome cover caps | 152.438.46.1 | | ✓ | ✓ | ✓ | | | | | | ✓ | ✓ |
| | Extension set for actuator plates for Sigma Concealed Tanks 2x6 and 2x4, Kappa and Omega Concealed Tanks | 240.938.00.1 | | ✓ | ✓ | ✓ | | | | | | ✓ | ✓ |
| | Mud guard protection housing for Sigma Concealed Tanks 2x6 and 2x4, plastic, 4 inch (10 cm) | 241.826.00.1 | | ✓ | ✓ | | | | | | | ✓ | ✓ |
| | Mud guard protection housing and extension set for urinal carrier | 241.930.00.1 | | | | | | | | ✓ | | | |
| | Mounting rod M12 x 10" long. Not supplied. | M12 x 10" | — | ✓ | ✓ | ✓ | ✓ | ✓ | | | | | |
| | Mounting rod M10 x 10" long. Not supplied. | M10 x 10" | — | | | | | | ✓ | | | | |
| | Mounting rod M8 x 10" long. Not supplied. | M8 x 10" | — | | | | | | | ✓ | | | |

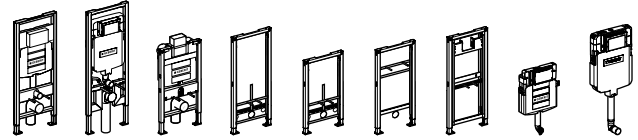
The information contained in this document is subject to change without notice.



| Description | Model Number | List Price \$ | 111.335 | 111.798 | 111.012 | 111.520 | 111.524 | 111.490 | 111.625 | 109.307 | 109.797 |
|---|---|---------------|---------|---------|---------|---------|---------|---------|---------|---------|---------|
| OPTIONAL Installation Accessories for Bidet Seats | | | | | | | | | | | |
|  | Water supply hose for bidet seat for Kappa and Omega Concealed Tank pre-wall. For adding bidet seat to an installed carrier. For complete installation, must order with 249.801.00.1. | 240.839.00.1 | | | | ✓ | | | | | |
|  | Water supply hose for bidet seat for 111.597.00.1 and 111.798.00.1 carrier with Sigma Concealed Tank 2x4. For adding bidet seat to an installed carrier. For complete installation, must order with 249.801.00.1. | 243.173.00.1 | | | ✓ | | | | | | |
|  | Water supply hose for bidet seat add-on after finished installation of Sigma 2x6 and 2x4, Kappa and Omega Concealed Tanks. | 249.801.00.1 | | ✓ | ✓ | ✓ | | | | | |
| OPTIONAL Installation Accessories for Geberit Duofix Carrier Frames | | | | | | | | | | | |
|  | Frame to wall anchoring for 5.125"-7.875" (13-20 cm) thick unfinished pre-wall | 111.013.00.1 | | | ✓ | | | | | | |
|  | Frame to wall anchoring for 5.125"-7.875" (13-20 cm) thick unfinished pre-wall | 111.815.00.1 | | ✓ | | ✓ | ✓ | ✓ | ✓ | ✓ | |
|  | Frame to wall anchoring for 5.125"-7.875" (13-20 cm) thick unfinished pre-wall corner installations | 111.835.00.1 | | ✓ | ✓ | ✓ | ✓ | ✓ | ✓ | ✓ | |
|  | Support brackets for wall-hung toilets with small contact surface (thin profiles) | 111.847.00.1 | | ✓ | | ✓ | | | | | |
|  | Fire protection set for Sigma Concealed Tank 90 min. fire resistance to DIN EN 1364-1:1999-10 | 111.863.00.1 | | ✓ | | | | | | | |
|  | Frame to wall anchoring where foot installations into floor are not allowed for 5.125"-9.50" (13-24 cm) | 111.064.00.1 | | ✓ | ✓ | ✓ | ✓ | ✓ | ✓ | ✓ | |
|  | Fastening set for sinks with 14.9"-22.8" (38-58 cm) mounting centers | 111.868.00.1 | | | | | | ✓ | | | |
|  | Frame to stud fastening set for extended stud spacing from 19.75"-25.56" (50-65 cm) | 111.869.00.1 | | ✓ | ✓ | ✓ | ✓ | ✓ | ✓ | ✓ | |
|  | Frame to wall anchoring extensions for 7.875"-15.75" (20-40 cm) thick (unfinished pre-wall) | 111.887.00.1 | | ✓ | ✓ | ✓ | ✓ | ✓ | ✓ | ✓ | |
|  | Crossbar for inlet 1/2" thread | 242.042.00.1 | | | | | | | ✓ | | |
|  | Retrofit adapter for inlet, 1/2" thread | 242.309.00.1 | | | | | | | ✓ | | |
|  | Elbow supply fitting set, Gun Metal | 465.034.00.2 | | | | ✓ | ✓ | ✓ | | | |

GEBERIT SYSTEM ACCESSORIES

Geberit Optional and Required Accessories for Installation



| Description | Model Number | List Price \$ | 111.335 | 111.798 | 111.012 | 111.520 | 111.524 | 111.490 | 111.625 | 109.304 | 109.307 | 109.797 |
|-------------|--------------|---------------|---------|---------|---------|---------|---------|---------|---------|---------|---------|---------|
| | | | 111.902 | 111.597 | 111.018 | | | | | | | |

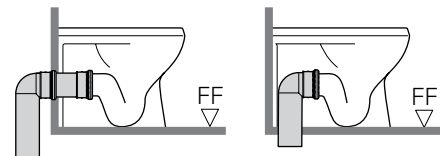
OPTIONAL Installation Waste Fitting Accessories

| | | | | | | | | | | | |
|--|--|--------------|---|---|---|--|--|--|--|--|---|
| | PP connector set with bend for floor-mount toilets with mounting hardware, 1 x 90° bends with socket for Ø4.375" (Ø110 mm) push fit piping for Ø3.82"-4.21" (Ø97-107 mm) male connection and expansion to Ø4.375" (Ø110 mm) outlet | 152.647.00.1 | | | | | | | | ✓ (For A or B discharge. See below) | ✓ |
| | HDPE waste fitting outlet bend, 1 x 90° bend with socket for Ø3.50" (Ø90 mm) push fit piping and Ø3.50" (Ø90 mm) outlet | 366.061.16.1 | | | | | | | | ✓ (For A discharge. See below) | ✓ |
| | HDPE straight connector with socket for Ø3.50" (Ø90 mm) push fit piping and Ø3.50" (Ø90 mm) outlet x 12" (31 cm) long | 366.887.16.1 | ✓ | ✓ | ✓ | | | | | ✓ (For A discharge. See below) | ✓ |
| | HDPE connector with offset for LH horizontal drain connections (as viewed from sitting position), 1 x 90° bend with socket for Ø3.50" (Ø90 mm) push fit piping, with 45° offset and Ø3.50" (Ø90 mm) outlet for 5.5" (13.97 cm) minimum walls only. | 366.913.16.1 | ✓ | ✓ | ✓ | | | | | ✓ (For A discharge. See below) | ✓ |
| | HDPE connector with offset for RH horizontal drain connections (as viewed from sitting position), 1 x 90° bend with socket for Ø3.50" (Ø90 mm) push fit piping, with 45° offset and Ø3.50" (Ø90 mm) outlet for 5.5" (13.97 cm) minimum walls only. | 366.914.16.1 | ✓ | ✓ | ✓ | | | | | ✓ (For A discharge. See below) | ✓ |
| | Cast iron fitting: 90° 3.5" (90 mm) inlet, 3" outlet, 2" NPTF heel outlet | 367.072.18.1 | ✓ | ✓ | ✓ | | | | | ✓ (For A discharge. See below) | ✓ |
| | HDPE "Back-to-back" connector for horizontal drain connections; 2 x 90° bends with sockets for Ø3.50" (Ø90 mm) push fit piping, with 45° offset and expansion to Ø4.375" (Ø110 mm) outlet for 10.75" (27.31 cm) minimum walls only. | 367.485.16.1 | ✓ | ✓ | ✓ | | | | | ✓ (For A or B discharge. See below) | ✓ |
| | HDPE "Back-to-back" connector for vertical drain connections; 2 x 90° bends with sockets for Ø3.50" (Ø90 mm) push fit piping and expansion to Ø4.375" (Ø110 mm) outlet for 10.75" (27.31 cm) minimum walls only. | 367.923.16.1 | ✓ | ✓ | ✓ | | | | | ✓ (For A or B discharge. See below) | ✓ |

Note: Any of these fittings in combination with Geberit installation systems are cUPC and IPC listed.

Waste Fitting Discharge Configurations for Floor Mount Back Outlet Toilets

Note: Mounting collar/clamp by installer



A. Floor-Mount Rear Discharge into Wall

B. Floor-Mount Rear Discharge into Floor

The information contained in this document is subject to change without notice.