



**KOVER™**

**BW1095**

**48x36x3 Rectangular Acrylic Shower Base (central drain)**

**SPECIFICATIONS**

### Features

- Rectangular shower base
- Acrylic base fiberglass reinforced
- 1219 mm x 914 mm (48 x 36 in.)
- Low-3 in. threshold (76 mm)
- Central drain
- Integrated tiling flange
- Drain cover included

### Colors

- White : BW1095-240

### Certifications

The specified model meets or exceeds the following standards;

- IAPMO Z124
- CSA B45.5



### Packaging

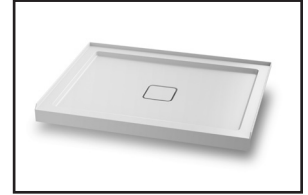
- **Dimensions:**  
1270 mm x 970 mm x 120 mm  
(50 x 38 3/16 x 4 3/4 in.)
- **Weight:** 44 lb (20 kg)

### Installation Notes

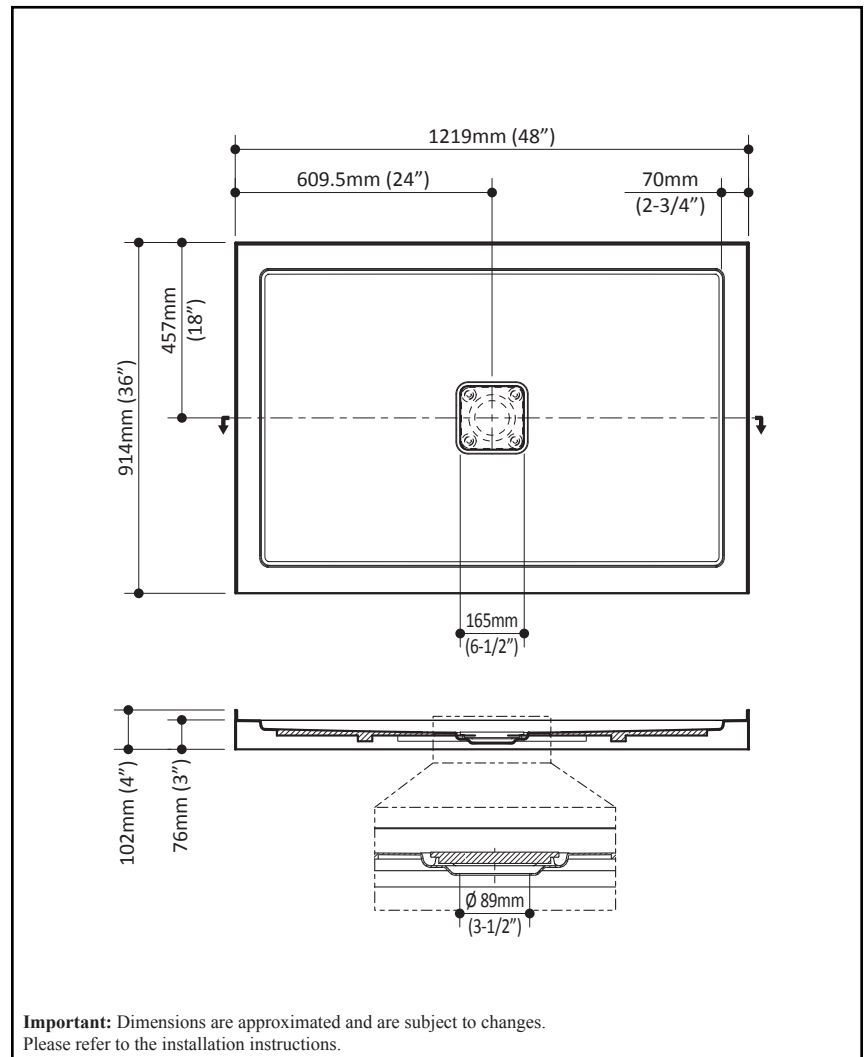
This product must be installed following the installation instructions provided.

### WARRANTY

Kalia Inc. guarantees all aspects of its products to be free of defects in material and workmanship for normal residential use. **Refer to the warranty included with the Kalia products for details.**



Product dimensions:



**Important:** Dimensions are approximated and are subject to changes. Please refer to the installation instructions.

**Kalia inc.**  
1355, 2nd Street  
Sainte-Marie (Quebec)  
Canada G6E 1G9

t. 1-418-387-9090  
1 877 GO KALIA (1-877-465-2542)  
f. 1-418-387-9089  
www.KaliaStyle.com