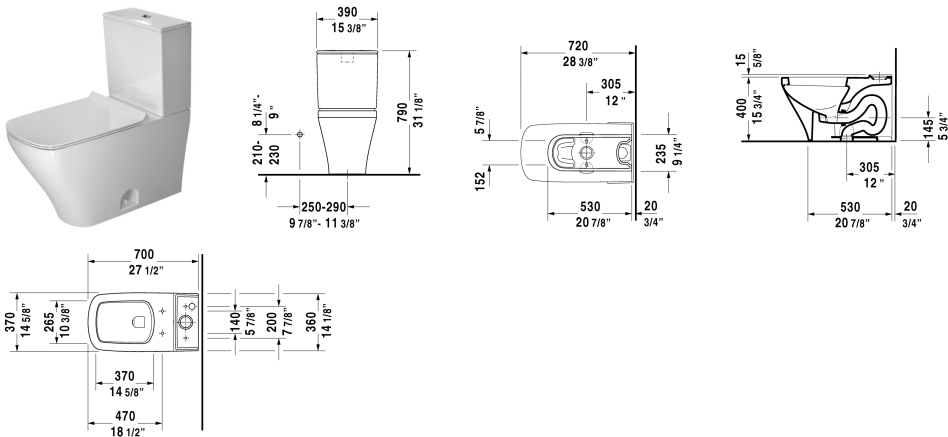


Two-piece toilet # 216001..00



Two-piece toilet	Dimension	Weight	Order number
US version toilet, syphonic, 12" rough-in, with dual flush piston valve, top flush, cUPC listed, vertical outlet, 1.6/0.8 gpf			
Colors			
00 White			
Variant			
		92 lb	216001..00
Sanitary ceramics with the special WonderGliss surface finish will remain clean and attractive-looking for a long time to come. When ordering WonderGliss please add a "1" as eleventh digit to the model number.			
Cistern for bottom left supply		30 lb	093520
Toilet seat and cover removable, elongated, hinges stainless steel, without automatic closure		5.7 lb	006051
Toilet seat and cover removable, elongated, hinges stainless steel, with SoftClose automatic closure		5.7 lb	006059

All drawings contain the necessary measurements which are subject to standard tolerances. They are stated in inch & mm and are non-binding. Exact measurements, in particular for customized installation scenarios, can only be taken from the finished ceramic piece.