



ONCE UPON A TIME...WATER®

**PRECISO™**

**BF1804**

**Floormount tub filler with handshower – cartridge included  
without rough-in**

**SPECIFICATIONS**

### Features

- Solid brass construction
- Ceramic disc cartridge
- Flexible 60" hose
- Laminar and hidden stream
- Integral check valves
- Integrated diverter

### Colors (Finishes)

- Chrome: BF1804-110

### Minimum flow rate

- 1/2" supply: 26 L/min (6.9 gpm) at 60 psi

### Certifications

*The specified model meets or exceeds  
the following standards;*



CSA B125.1  
ASME A112.18.1  
ICC A117.1

### Installation Notes

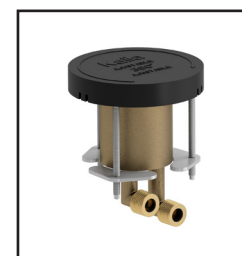
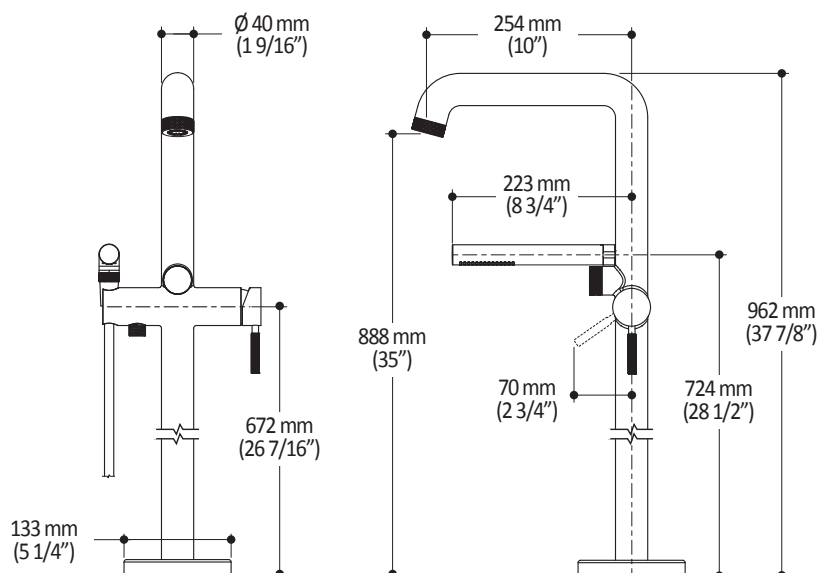
This product must be installed following the installation instructions provided.

### WARRANTY

Kalia Inc. guarantees all aspects of its products to be free of defects in material and workmanship for normal residential use. **Refer to the warranty included with the Kalia products for details.**



*Product dimensions:*



**105162 required**

**Important:** Dimensions are approximated and are subject to changes. Please refer to the installation instructions.



ONCE UPON A TIME...WATER®

1355, 2<sup>nd</sup> Street, Industrial Park  
Sainte-Marie (Québec)  
Canada G6E 1G9

T 418-387-9090  
1-877-GO-KALIA (1-87- 465-2542)  
F 418 387-9089

**KaliaStyle.com**

