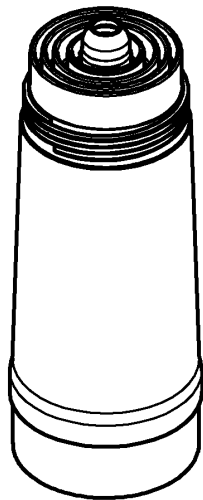
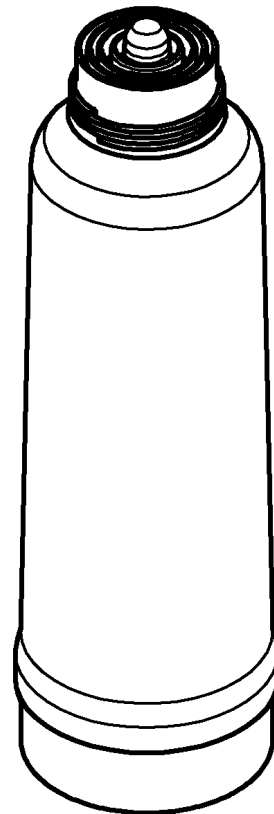


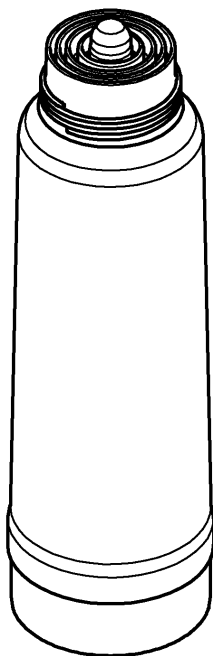
40 404  
 40 547  
 40 691



40 412



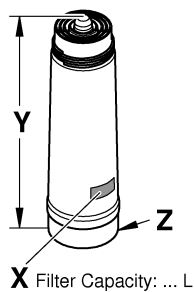
40 430



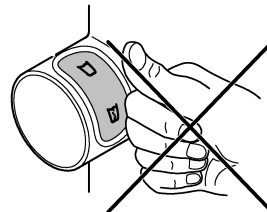
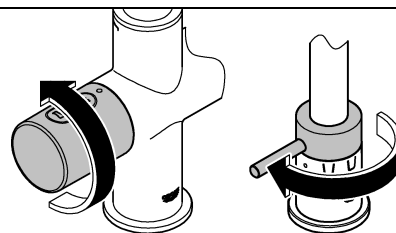
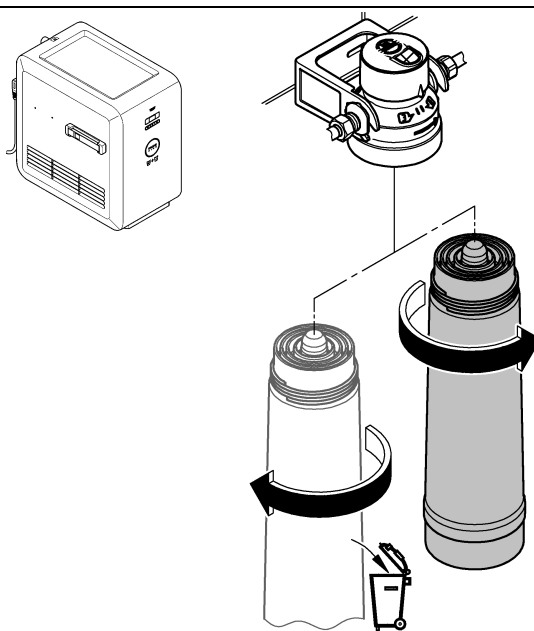
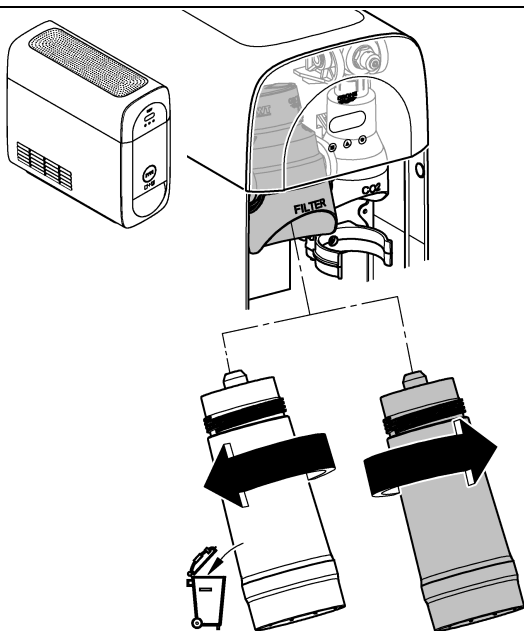
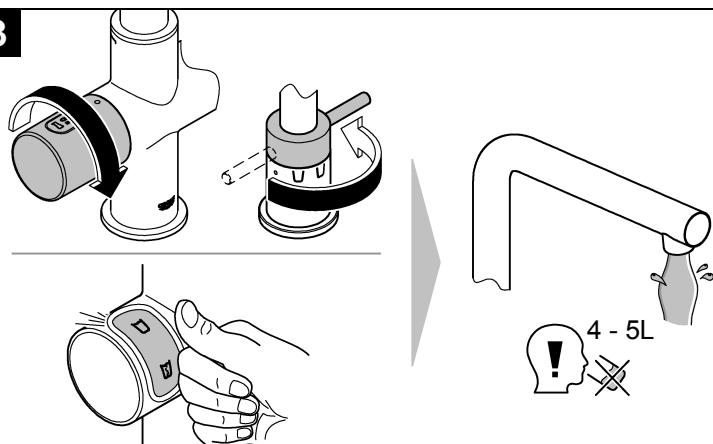
[www.grohe.com/sicherheitsdatenblaetter/](http://www.grohe.com/sicherheitsdatenblaetter/)

[www.grohe.com/safety-data-sheets/](http://www.grohe.com/safety-data-sheets/)

<b>D</b> .....1	<b>NL</b> .....7	<b>PL</b> .....12	<b>P</b> .....17	<b>BG</b> .....22	<b>CN</b> .....27
<b>GB</b> .....2	<b>S</b> .....8	<b>UAE</b> .....13	<b>TR</b> .....18	<b>EST</b> .....23	<b>UA</b> .....28
<b>F</b> .....3	<b>DK</b> .....9	<b>GR</b> .....14	<b>SK</b> .....19	<b>LV</b> .....24	<b>RUS</b> .....29
<b>E</b> .....4	<b>N</b> .....10	<b>CZ</b> .....15	<b>SLO</b> .....20	<b>LT</b> .....25	
<b>I</b> .....5	<b>FIN</b> .....11	<b>H</b> .....16	<b>HR</b> .....21	<b>RO</b> .....26	



	X	Y	Z
40 404	S	315 12 <sup>3</sup> / <sub>8</sub> "	Ø88 Ø3 <sup>7</sup> / <sub>16</sub> "
40 430	M	376 14 <sup>13</sup> / <sub>16</sub> "	Ø110 Ø4 <sup>5</sup> / <sub>16</sub> "
40 412	L	429 16 <sup>7</sup> / <sub>8</sub> "	Ø128 Ø5 <sup>1</sup> / <sub>16</sub> "
40 547	Ac	234 9 <sup>3</sup> / <sub>16</sub> "	Ø88 Ø3 <sup>7</sup> / <sub>16</sub> "
40 691	Mg+	315 12 <sup>3</sup> / <sub>8</sub> "	Ø88 Ø3 <sup>7</sup> / <sub>16</sub> "

**1****2****3**

X  
Filter Capacity: ...L  
rt.: 40 ... 001



°KH/ °dGH



+



+



Bitte diese Anleitung an den Benutzer der Armatur weitergeben!  
Please pass these instructions on to the end user of the fitting!  
S.v.p remettre cette instruction à l'utilisateur de la robinetterie!



## Application

The GROHE Blue® filter cartridge reduces carbonate hardness and filters out heavy metals such as lead and copper. Moreover, clouding and organic contamination, as well as substances which impair odour and taste (chlorine), are reduced. Furthermore, the filter material captures particles such as sand and suspended solids.

The water filtrate is classified as Category 2 according to EN 1717.

## Safety notes

- The filter system **may only** be operated with cold water of foodstuff grade.
- The filter head is equipped with a non-return valve according to EN 13959.
- The filter system **must** be flushed each time the filter is changed.
- At the installation location, the filter system **must** be protected against mechanical damage, heat and direct sunlight.  
Do **not** install near heat sources or an open fire.
- Following storage and transport at temperatures below 0 °C, a replacement filter cartridge **must** be stored in its opened original packaging at ambient temperatures of 4 – 40 °C for at least 24 hours before use.
- The maximum shelf life of a replacement filter cartridge in its unopened packaging is 2 years.
- The filter head **must** be replaced after 5 years.
- The filter system **must** be put out of service if an official boilwater notice is issued, e.g. by the water supplier. The filter cartridge **must** be changed once the boil-water notice is lifted.
- The filter material in the filter cartridge is specially treated with silver. It is possible that a small amount of silver, which is completely safe, may be released into the water. The amount is in keeping with the recommendations of the World Health Organisation (WHO) for drinking water.
- It is generally recommended to boil tap water for certain groups of people (e.g. immuno-compromised people, babies). This also applies to filtered water.
- Filtered water is a foodstuff and **must** be used within 1 to 2 days.
- GROHE recommends not leaving the filter system out of service for extended periods of time.

Following periods of non-use, the GROHE Blue® filter system **must** be flushed in accordance with the following table prior to re-use:

Filter	2 days - 4 weeks
<b>S (40 404)</b>	2 - 3 liters
<b>M (40 430)</b>	4 - 5 liters
<b>Ac (40 547)</b>	4 - 5 liters
<b>Mg+ (40 691)</b>	4 - 5 liters
<b>L (40 412)</b>	6 - 7 liters

If the GROHE Blue® filter system is not used for more than 4 weeks the filter cartridge **must** be changed.

## Technical data

- Operating pressure: 0.12 – 0.8 MPa
- Water temperature at the inlet: 4 – 30 °C
- Ambient temperature: 4 – 40 °C
- Nominal flow rate: 180 l/h
- Pressure drop: 0.06 MPa at 180 l/h
- Filter capacity at least 12 months or:
  - 600 liters at 15°dKH (40 404)
  - 600 liters at 15°dKH (40 691)
  - 1,500 liters at 15°dKH (40 430)
  - 2,600 liters at 15°dKH (40 412)
  - 3,000 liters at 15°dKH (40 547)

## Note

The filter capacity is specified for defined test conditions, the actual capacity in operation may be higher or lower.

## Flushing the filter cartridge

During commissioning and when changing the filter, cleanliness and hygiene must be observed!  
The filter system **must** be flushed each time the filter is changed.

**Setting the filter size**, see technical product information for the cooler or the control unit.

The GROHE Blue® system is set for operation with the filter cartridge S-Size (40 404) at the factory. When using a different filter cartridge, the GROHE Blue® system **must** be set to the relevant value.

**Setting the carbonate hardness**, see technical product information for the cooler or the control unit.  
The relevant water supplier can provide information on the carbonate hardness.

The GROHE Blue® system is set to the standard value for carbonate hardness (bypass 2) at the factory: carbonate hardness 7 - 24°dKH. The carbonate hardness **must** be adjusted in the case of deviations.

**Resetting the filter capacity**, see technical product information for the cooler or the control unit.

The GROHE Blue® system **must** be reset after the filter has been changed.

In the event of problems please consult a specialist installer or the GROHE Service Hotline via email under **TechnicalSupport-HQ@grohe.com**.

## Environment and recycling

Used filter cartridges can be disposed of hazard-free in domestic waste.