

MAAX SUBMITTAL SPECIFICATIONS

Rubix 6032 AFR DTF

MODEL NUMBER 105820

DIMENSIONS: 60" x 32" x 20" Acrylic



Project :
Contractor :
MAAX Representative : Tel :
Date :

www.maax.com

Vivez l'expérience
MAAX®
Enjoy the experience

STANDARD FEATURES

- Narrow end decks, long bathing well and smooth bottom
- Cubic design
- Integrated flat apron and tiling flange (double)
- Right or left drain
- Above-the-Floor Rough (AFR) included
- Alcove installation

OPTIONS

- Cable-operated waste and overflow
- Foam pillow with 2 suction pads
- Waste and overflow

UNIQUE FEATURES

- Above-the-Floor Rough (AFR)

SYSTEMS

- None

DOOR SELECTION

Combine with MAAX's complete shower door offering visit www.maax.com

CERTIFICATIONS

Maax products adhere to one or more of the following certifications:



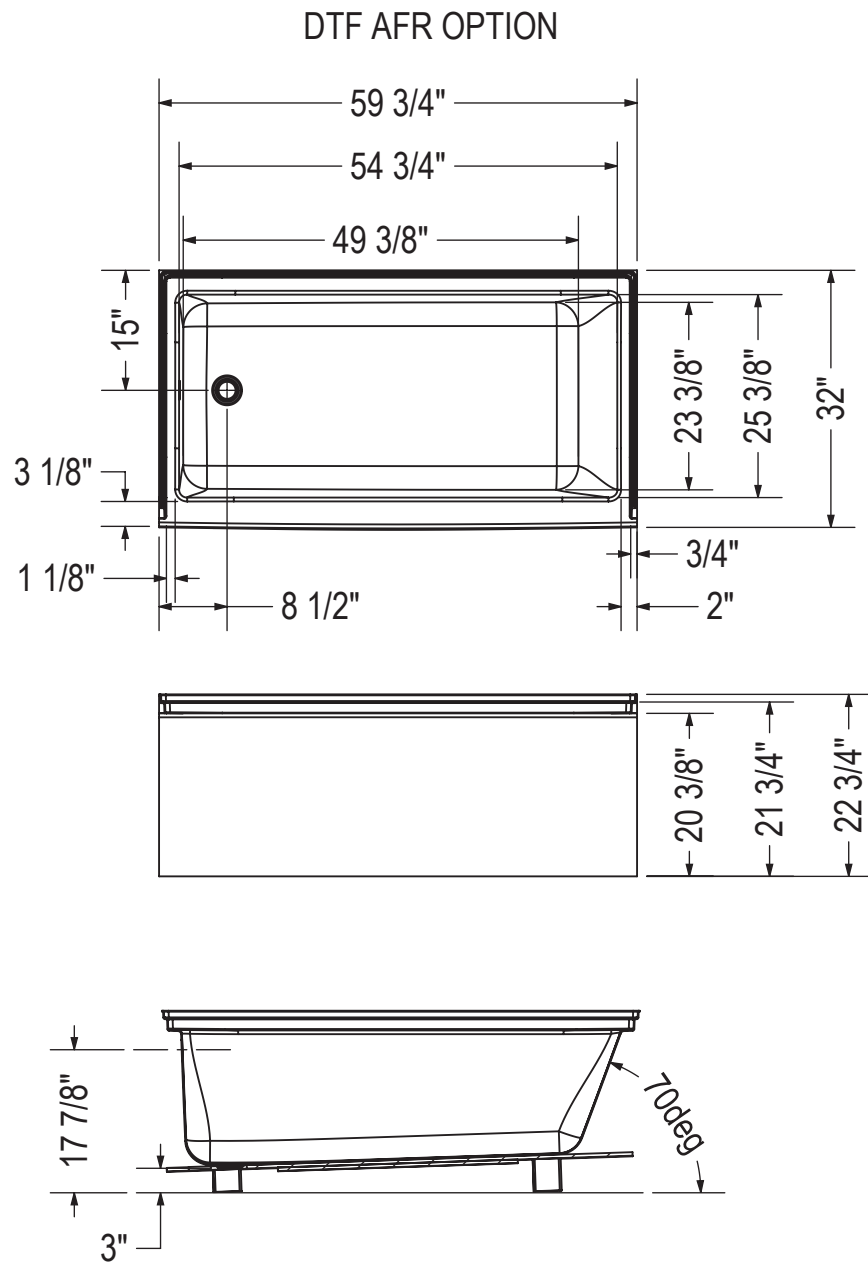
2017-11-27

MAAX SUBMITTAL SPECIFICATIONS

Rubix 6032 AFR DTF

MODEL NUMBER 105820

TECHNICAL DRAWINGS



All dimensions are approximate. Structure measurements must be verified against the unit to ensure proper fit.