

Concealed Trapway Studio® Touchless Chair Height Elongated Toilet with Seat

- 2794709 Chair Height Elongated Toilet**
 - Combination tank and bowl with seat
 - Simple hand wave touchless flush technology
 - 2-1/2" diameter sensor module can be installed on wall within 3 feet of toilet or on top of toilet tank itself
 - Siphon action jetted bowl with smooth-sided, concealed trapway
 - Ultra-low consumption (1.28 gpf/4.8 Lpf) utilizes 20% less water
 - Meets EPA WaterSense® criteria
 - 12" (305mm) rough installation
 - 3" flush valve with integrated fill valve
 - 2-1/8" trapway bowl with EverClean® surface included
 - Obtains best 1,000g MaP flush score**
 - Includes top mount, slow-close seat and cover with easy lift-off feature for cleaning
 - Powered by 3 AAA sensor and 4 AA control module batteries (included)
 - Convenient, manual polished chrome override flush actuator on side of tank
 - Limited lifetime warranty on chinaware, limited 5 year warranty on all mechanical parts, and limited 1 year warranty on electronic parts and seat

- 2794769** Same as above except with optional TCLD tank
- 3075120** Chair Height Elongated Bowl with Seat
- 4000709** Touchless Tank with Sensor
- 5025A65G** Slow-Close Seat Packed with Bowl

Alternate Tank Configuration Available:

- 4000769** Touchless Tank with Sensor and Tank Cover Locking Device (TCLD)

Nominal Dimensions:

30-3/16" x 15-13/16" x 30-11/16"
(767 x 401 x 780mm)

Fixture and toilet seat only, wax ring and supply by others

Compliance Certifications -

Meets or Exceeds the Following Specifications:

- ASME A112.19.2/CSA B45.1 for Vitreous China Fixtures
- US EPA WaterSense® Specification for HETs

** Maximum Performance (MaP) testing performed by IAPMO R&T Lab. MaP Report conducted by Gauley Associates Ltd. and Koeller and Company.

 **MEETS THE AMERICANS WITH DISABILITIES ACT GUIDELINES AND ICC ANSI A117.1 REQUIREMENTS FOR ACCESSIBLE AND USABLE BUILDING FACILITIES-CHECK LOCAL CODES.**

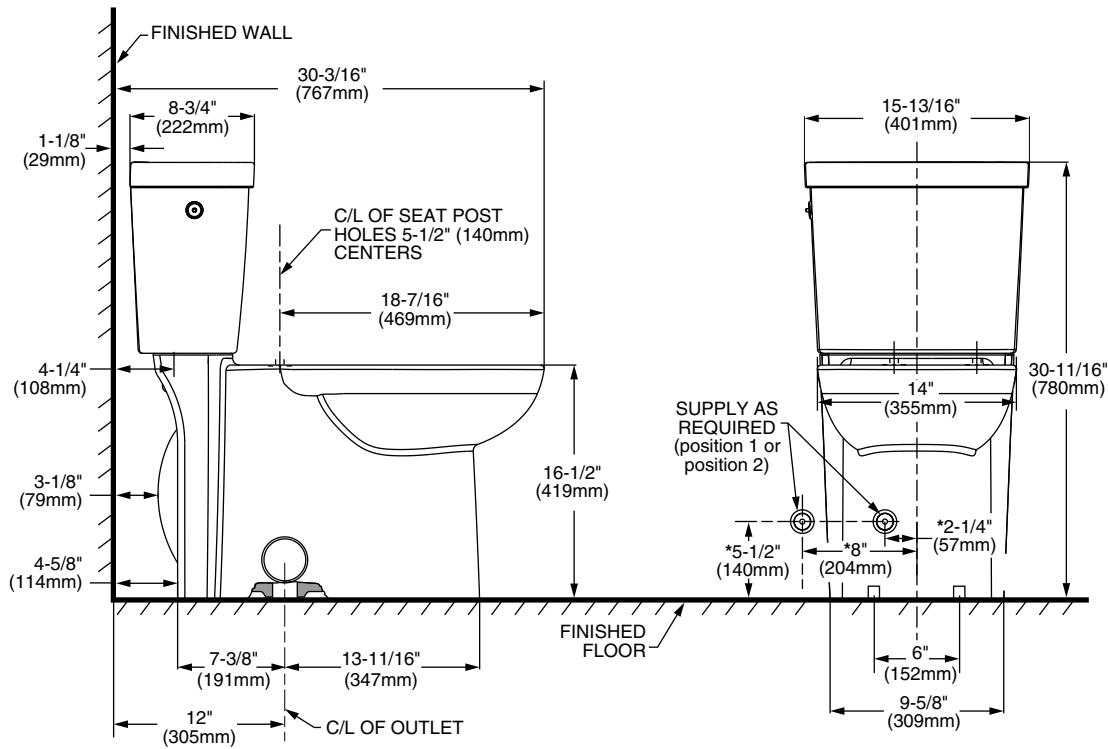


SEE REVERSE FOR ROUGHING-IN DIMENSIONS

To Be Specified:

- Color: White
- Supply with stop:





NOTES:

THIS COMBINATION IS DESIGNED TO ROUGH-IN AT A MINIMUM DIMENSION OF 305MM (12") FROM FINISHED WALL TO C/L OF OUTLET.
 * DIMENSIONS SHOWN FOR LOCATION OF SUPPLY ARE SUGGESTED.
 SUPPLY NOT INCLUDED WITH FIXTURE AND MUST BE ORDERED SEPARATELY.

IMPORTANT: Dimensions of fixtures are nominal and may vary within the range of tolerance established by ANSI Standard A112.19.2. These measurements are subject to change or cancellation. No responsibility is assumed for use of superseded or voided pages.