

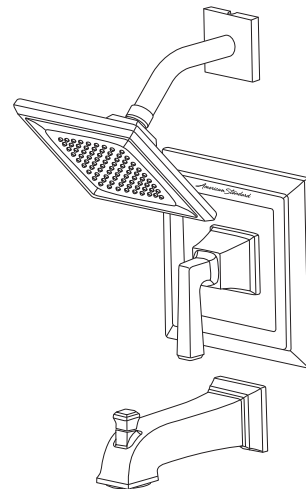
American Standard

INSTALLATION INSTRUCTIONS **T45550X**

TOWN SQUARE® S PRESSURE BALANCING BATH AND SHOWER TRIM KIT

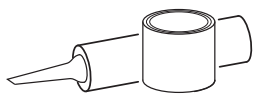
*Thank you for selecting American Standard...
the benchmark of fine quality for over 140 years.*

**To ensure that your installation proceeds smoothly-please
read these instructions carefully before you begin.**



Certified to comply with ANSI A112.18.1M

RECOMMENDED TOOLS



Plumbers' Putty
or Caulking



Teflon Tape



Phillips Screwdriver



Flat Blade Screwdriver



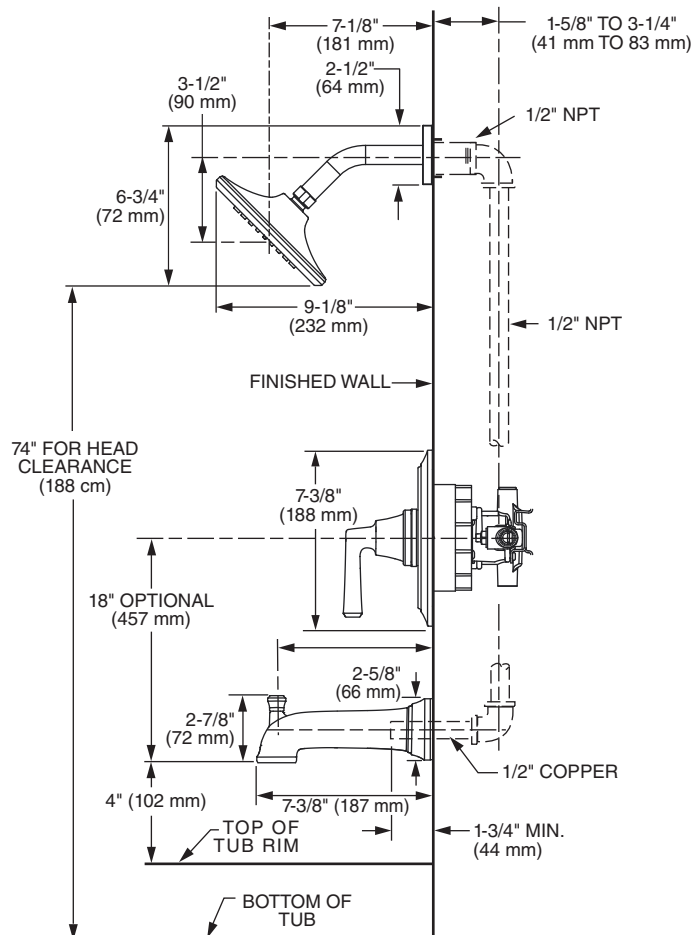
Adjustable Wrench



Channel Locks

ROUGHING-IN DIMENSIONS

- To assure proper positioning in relation to wall.
Note roughing-in dimensions.



1 INSTALL VALVE TRIM **CAUTION** Protect finish on SHOWER HEAD and TUB SPOUT when installing.

- **Figure 1.** Remove plaster guard from valve. Push CAP (1) over VALVE CARTRIDGE (2) until seated against stop.
- **Figure 2.** Make sure O-RING (6) is secure within ESCUTCHEON HOLDER (3). Push ESCUTCHEON HOLDER (3) onto CAP (1) and attach with LONG SCREWS (4).
- **Figure 3.** Install ESCUTCHEON (5) onto CAP (1) and push flush against finished wall. Escutcheon (5) will snap fit onto ESCUTCHEON HOLDER (3).

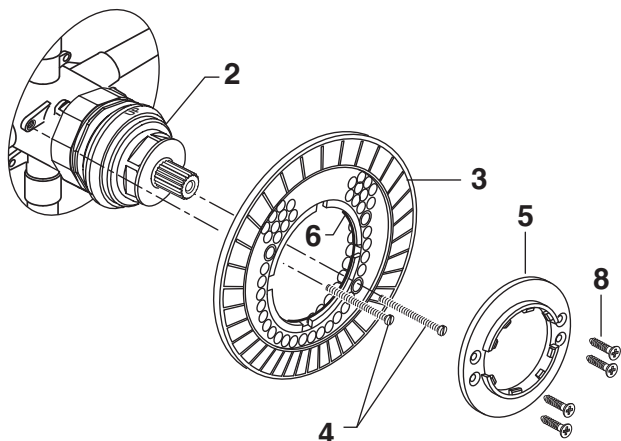


Figure 2.

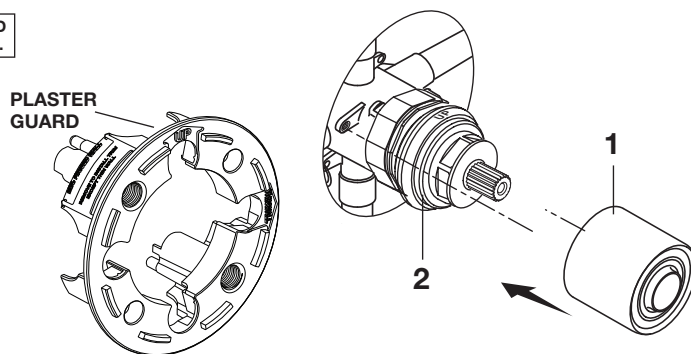


Figure 1.

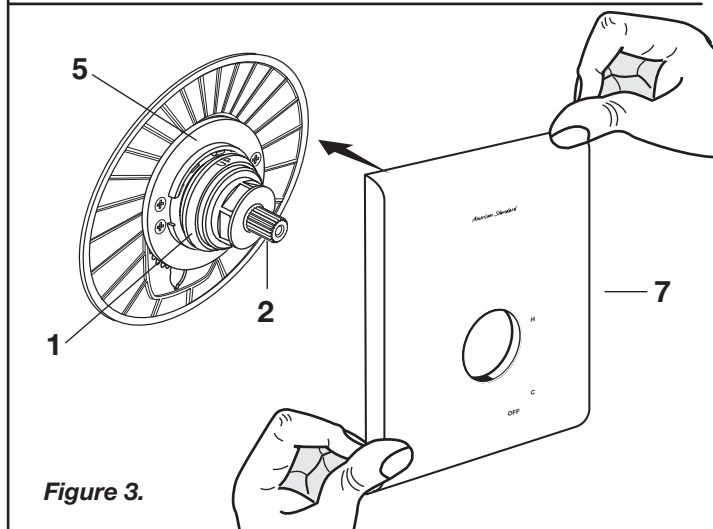
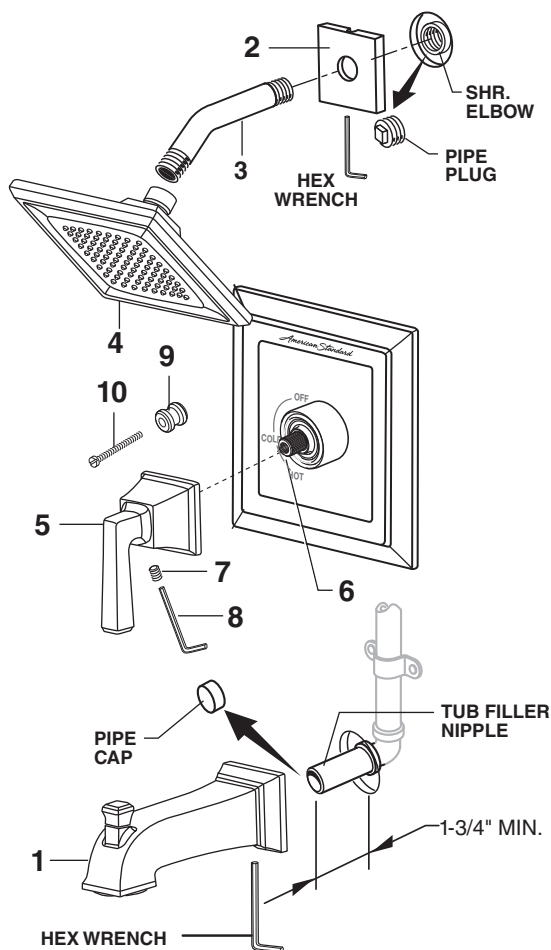


Figure 3.

2 INSTALL, TUB SPOUT, SHOWER HEAD, SHOWER ARM WITH FLANGE AND HANDLE

- Remove pipe cap and plug from shower and tub rough piping.
- Install TUB SPOUT (1) onto tub nipple.
- **CAUTION: Protect finish on TUB SPOUT when installing.**
- Install SHOWER ESCUTCHEON (2) onto SHOWER ARM (3). Apply sealant or Teflon tape to threads on both ends of SHOWER ARM (3) and thread longer leg of SHOWER ARM (3) into shower elbow.
- Thread SHOWER HEAD (4) onto SHOWER ARM (3).
- **CAUTION: Protect finish on SHOWER HEAD and ARM when installing.**
- Hold ADAPTER (9) onto CARTRIDGE STEM (6) and install ADAPTER SCREW (10) through ADAPTER (9) into CARTRIDGE STEM (6). Tighten ADAPTER SCREW (10) to secure ADAPTER (9) to CARTRIDGE STEM (6).
- Install HANDLE (5) onto ADAPTER (9). Tighten SET SCREW (7) with HEX WRENCH (8) supplied.



American Standard

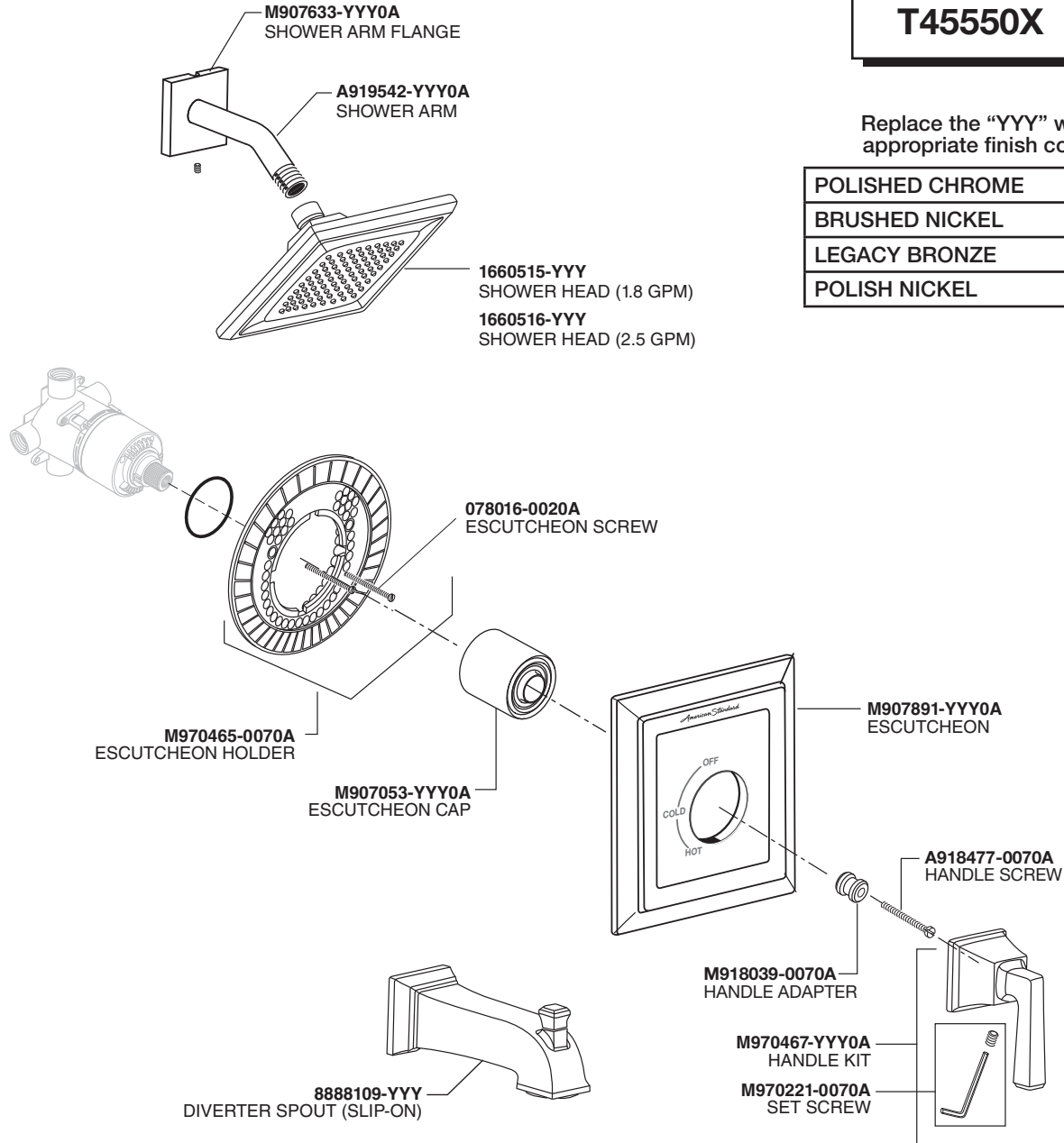
TOWN SQUARE® S PRESSURE BALANCE BATH AND SHOWER TRIM KIT

MODEL NUMBER

T45550X

Replace the "YYY" with
appropriate finish code

POLISHED CHROME	002
BRUSHED NICKEL	295
LEGACY BRONZE	278
POLISH NICKEL	013



HOT LINE FOR HELP

For toll-free information and answers to your questions, call:
1 (800) 442-1902

Mon. - Fri. 8:00 a.m. to 8:00 p.m. EST
Saturday 10:00 a.m. to 4:00 p.m. EST

IN CANADA 1-800-387-0369
(TORONTO 1-905-306-1093)

Weekdays 8:00 a.m. to 7:00 p.m. EST

IN MEXICO 01-800-839-1200



PART OF **LIXIL**