

## Helix® Touchless Faucet

### FEATURES

- The choice of self-generating hydropowered ECOPOWER® system or AC system
- Micro-sensor positioned underneath the spout head provides accurate hand detection and ensures smooth, consistent water distribution
- Vandal resistant nozzle
- Aerated flow
- Durable chrome plated spout body
- Kit includes spout body, controller box, and mounting hardware (supply lines not included)
- 0.35 gpm aerated flow
- Contributes to earning LEED® credits
- Equipped with 0.35 gpm flow control. 0.12 gpc, 20 sec on-demand flow

### MODELS

- ☐ **T26S32E\$\$\$**
  - TLE26001U2\$\$\$ (Helix Spout 20 sec on-demand)
  - TLE03501U2 (Controller: ECOPOWER, 0.12 gpc, 20 sec on-demand)
- ☐ **T26S32EM\$\$\$**
  - TLE26001U2\$\$\$ (Helix Spout 20 sec on-demand)
  - TLE03501U2 (Controller: ECOPOWER, 0.12 gpc, 20 sec on-demand)
  - TLM10 (Mixing Valve)
- ☐ **T26S32ET\$\$\$**
  - TLE26001U2\$\$\$ (Helix Spout 20 sec on-demand)
  - TLE03501U2 (Controller: ECOPOWER, 0.12 gpc, 20 sec on-demand)
  - TLE05701U (Thermostatic Mixing Valve)
- ☐ **T26S32A\$\$\$**
  - TLE26001U2\$\$\$ (Helix Spout 20 sec on-demand)
  - TLE01501U (Controller: AC, 0.12 gpc)
- ☐ **T26S32AM\$\$\$**
  - TLE26001U2\$\$\$ (Helix Spout 20 sec on-demand)
  - TLE01501U (Controller: AC, 0.12 gpc)
  - TLM10 (Mixing Valve)
- ☐ **T26S32AT\$\$\$**
  - TLE26001U2\$\$\$ (Helix Spout 20 sec on-demand)
  - TLE01501U (Controller: AC, 0.12 gpc)
  - TLE05701U (Thermostatic Mixing Valve)

### COLORS/FINISHES

- #CP Polished Chrome

### OPTIONAL ACCESSORIES

- THP3158#CP - 4" Cover Plate
- THP3159#CP - 8" Cover Plate
- THP3237 - Swivel Coupling



### ECOPOWER or AC SYSTEM

### PRODUCT SPECIFICATION

TOTO Model # \_\_\_\_\_ Choice of self-generating hydropowered ECOPOWER system or AC system. The faucet shall have maximum of 20 seconds on-demand flow (0.12 gpc). The faucet shall have self-adjusting sensor. Product equipped with 0.35 gpm flow regulator.

### CODES/STANDARDS

- Operates below federally mandated consumption limit of 0.25 gpc
- Complies to California Green Building Code, CALGreen max flow of 0.20 gpc
- Meets or exceeds ASME A112.18.1/CSA B125.1, and NSF 372
- Meets or exceeds UL 1951, CSA C22.2 No.14 and 68 (AC systems only)
- Certifications: IAPMO(cUPC), California Energy Commission (CEC), State of Massachusetts, and others
- Complies with City of Los Angeles Water Efficiency Ordinance
- ADA compliant
- Complies with Federal and State statutes as low-lead (contains a weighted average of 0.25% lead or less)
- Complies with CA Prop 65 warning requirements



\*For codes and standards of mixing valves TLM10 and TLE05701U, please refer to corresponding product spec sheet

# T26S32 Series

## Helix® Touchless Faucet

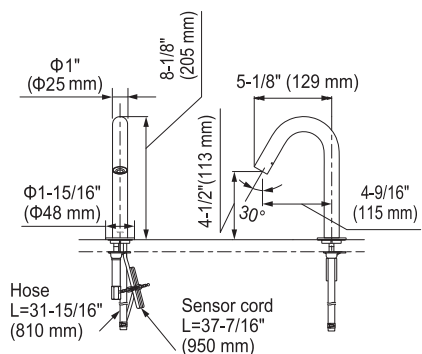
### SPECIFICATIONS

Type	ECOPOWER	AC
Power Supply	Hydropower Generation (self-powering power supply)	AC 120V
Sensor Detection Range	5-1/8" ~ 7-7/8" (130 ~ 200 mm) Sensor is self-adjusting	
Water Supply Pressure	Min (Dynamic/Flowing) Pressure: 15 psi (100 kPa) Max (Static) Pressure: 80 psi (551 kPa)	
Water Supply	G 1/2" (1/2" NPSM compatible)	
Inlet Temperature Range	39-110°F (4-43°C)	
Ambient Temperature	32-104°F (0-40°C)	
Humidity	Max. 90% RH	
Flow Rate	0.12 gpc (0.44 Lpc)** - max 20 second On Demand*** (0.12 gpc = 0.35 gpm x 20/60 sec) Equipped with 0.35 gpm flow control	
Warranty	Three years	

\*\*Gallons per cycle (gpc) is the amount of water discharged per usage cycle.

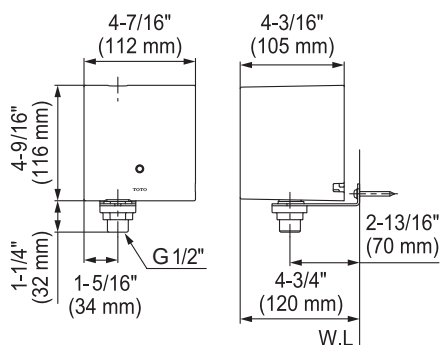
\*\*\* On-demand refers to the way in which the water is dispensed (i.e.; water is only dispensed when the sensor is activated by the user as needed).

#### Helix Touchless Faucet

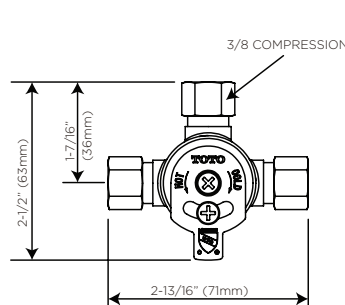


- Mounting deck thickness: 1/4" (5 mm) - 2" (50 mm)
- Spout hole: Ø1-1/4" (Ø32 mm) - Ø1-3/8" (Ø35 mm)

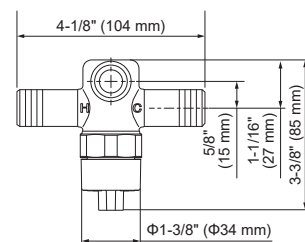
#### ECOPOWER Controller



#### Available Mixing Valves



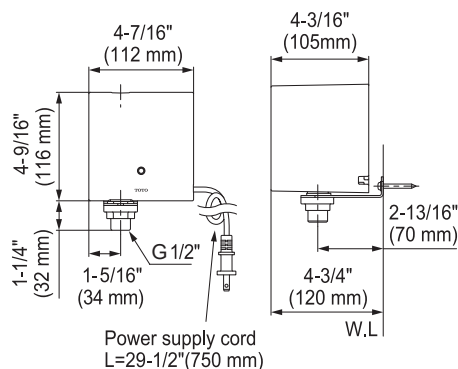
Hot/Cold Mixing Tee (TLM10)



G1/2" (1/2" NPSM Compatible) threaded fittings

Thermostatic Mixing Valve (TLE05701U)

#### AC Controller



**TOTO®**

These dimensions and specifications are subject to change without notice