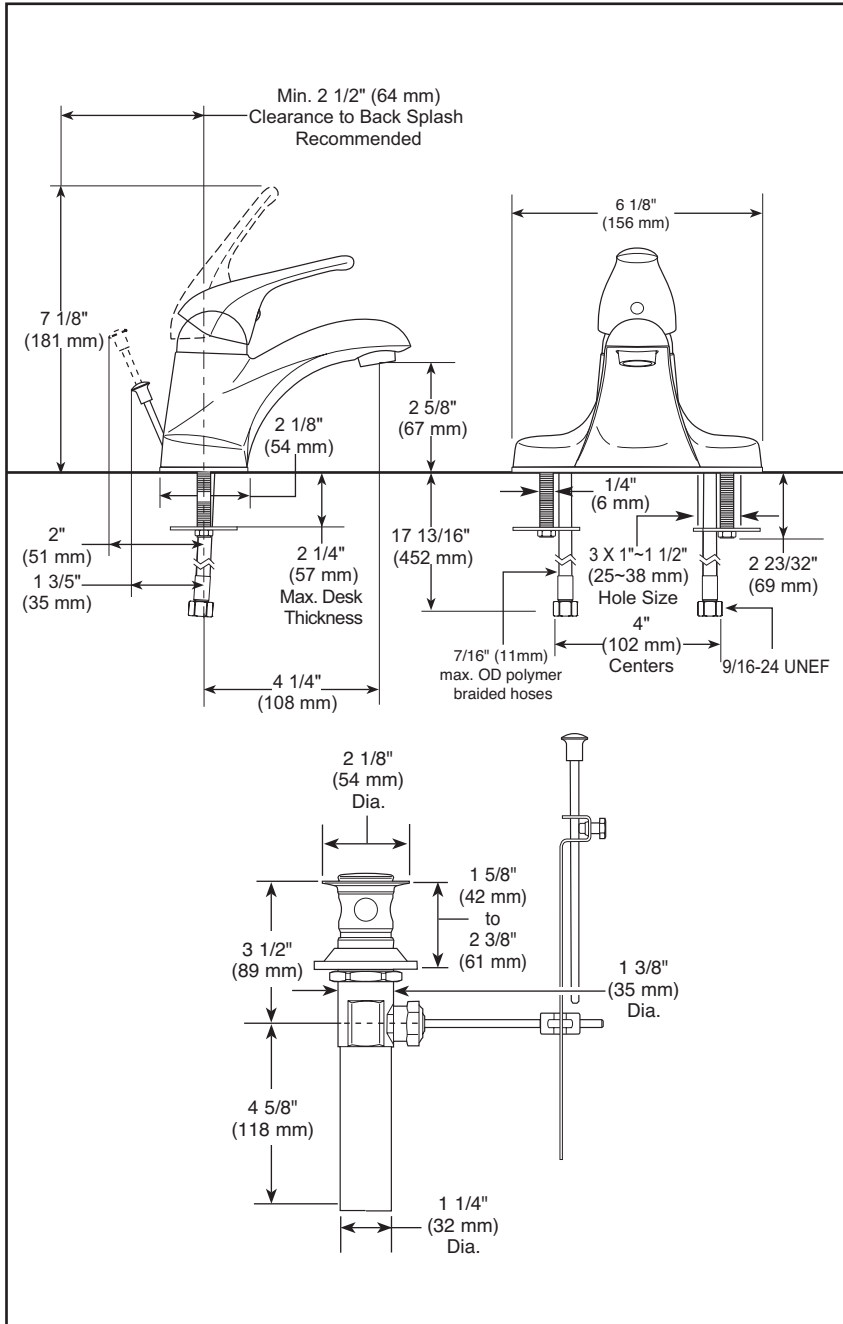


Submitted Model No.: _____

Specific Features: _____



▲ Designate proper finish suffix

Delta reserves the right (1) to make changes in specifications and materials, and (2) to change or discontinue models, both without notice or obligation. Dimensions are for reference only. See current full-line price book or www.specselect.com for finish options and product availability.

DSP-L-B510LF-20



LAVATORY FAUCETS

- Single Handle Deck Mount
- 3 Hole Sink Applications
- 4" Centerset

STANDARD SPECIFICATIONS

- Solid brass fabricated body.
- Single handle lavatory faucets for exposed mounting on 3 hole sinks with 4" centers.
- 4" (102 mm) centerset.
- 4 1/4" (108 mm) long spout.
- All operating parts shall be replaceable from the top.
- Lever handle. Control mechanism is the rotating stainless steel ball type with replaceable non-metallic seats.
- Control handle shall return to neutral position when valve is turned off.
- Models have 7/16" (11 mm) max. OD polymer braided hoses – 20" (508 mm) long with 9/16-24 UNEF adapters.
- Models include metal pop-up type fitting with plated metal flange and stopper cap.
- Maximum flow rate 1.6 gpm @ 90 psi.

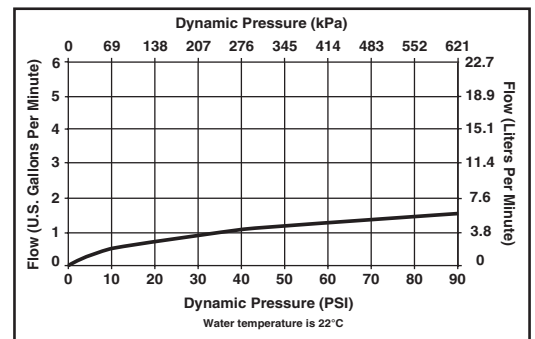
WARRANTY

- Lifetime Faucet and Finish Limited Warranty to the original purchaser to be free from defects in material and workmanship.
- 5-year Limited Warranty for usage in all industrial and commercial and business applications.



COMPLIES WITH:

- Complies to ASME A12.18/CSA B125.1
- Indicates compliance to ICC/ANSI A117.1
- Verified compliant with 0.25% weighted average Pb content regulations
- EPA WaterSense®



55 E. 111th Street, Indianapolis, Indiana 46280
395 Matheson Blvd. E., Mississauga, ON L4Z 2H2
© 2014 Masco Corporation of Indiana