

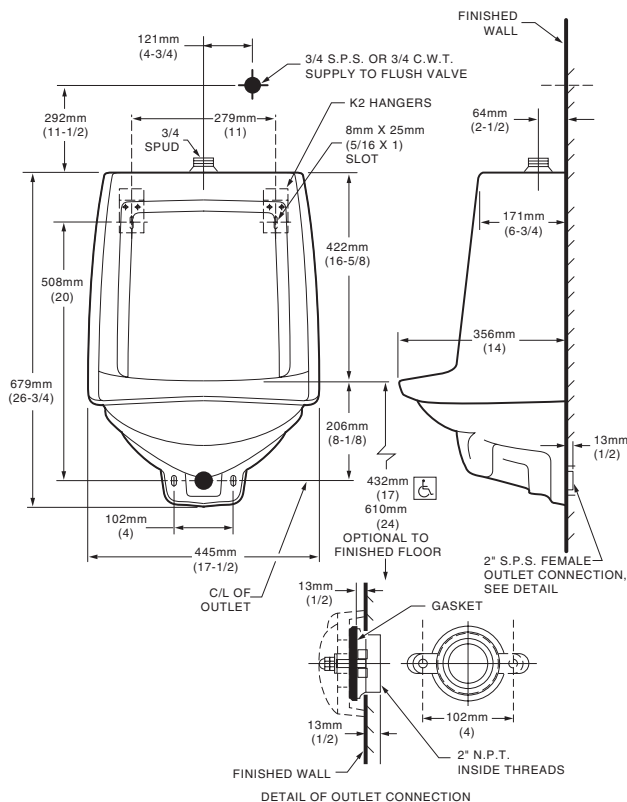
TRIMBROOK™ URINAL

VITREOUS CHINA

American Standard
Style That Works Better

BARRIER FREE 

6561.017 Top Spud



COMMERCIAL/INSTITUTIONAL FIXTURES



MEETS THE AMERICANS DISABILITIES ACT GUIDELINES AND ANSI A117.1 REQUIREMENTS FOR ACCESSIBLE AND USEABLE BUILDING FACILITIES – CHECK LOCAL CODES

● WHEN INSTALLED SO TOP OF RIM IS 432MM (17") FROM THE FINISHED FLOOR.

NOTES:

FLUSH VALVE NOT INCLUDED WITH FIXTURE AND MUST BE ORDERED SEPARATELY.
PROVIDE SUITABLE REINFORCEMENT FOR ALL WALL SUPPORTS.

IMPORTANT:

Dimensions of fixtures are nominal and may vary within the range of tolerance established by ANSI Standard A112.19.2. These measurements are subject to change or cancellation. No responsibility is assumed for use of superseded or voided pages.