

FLOODSTOP™

IPS CORPORATION

Point-of-Use Leak Detection Devices

Durable • Multi-use • Auto-shut off • Audible alert



STOP FLOOD DAMAGE

BEFORE IT EVER STARTS™

Floodstop is a point-of-use leak detection device that **automatically** shuts off the water supply to an appliance or fixture the moment a leak is detected. Once water is detected, the motorized ball valves **close** and **sound an alarm**. Floodstop is a **durable and multi-use device**, which limits potentially devastating flood damage, allowing the plumber, builder, and homeowner to have peace-of-mind knowing no flood caused by an appliance or fixture will go unnoticed. **STOP FLOOD DAMAGE BEFORE IT EVER STARTS™**.



All kits include: Motorized Ball Valves

All Floodstop valves are lead-free, CNC-machined, motorized ball valves. Open valves auto-cycle closed every 30 days for regular self-maintenance. Valves are multi-use – a one time single investment.



Control Unit and AC Power Supply

Floodstop's Control Unit is powered by the included AC power supply. Optionally, it may be powered with 4 AA batteries (not included)*. Buttons on the front of the unit are easily accessible and illuminate to show status. All wired connections are different for easy installation. Sensor sensitivity can be adjusted at the control unit.

*Batteries used in conjunction with the AC power supply provide backup should AC power fail.



Mounting Hardware

Floodstop kits include screws and drywall anchors, plus a hook and loop, self-adhesive mounting pad for multiple mounting options.

Pigtail

Floodstop's pigtail ties into Building Maintenance Systems (BMS) and sends a relay to notify of alarm and valve closure.

Sensor

Floodstop's sensor is a simple circuit board that senses the smallest drops of water and alerts the valves to close. Sensitivity can be adjusted at the control unit. Sensors can be daisy-chained together to connect multiple sensors to the same controller unit.

Water Heater Kits

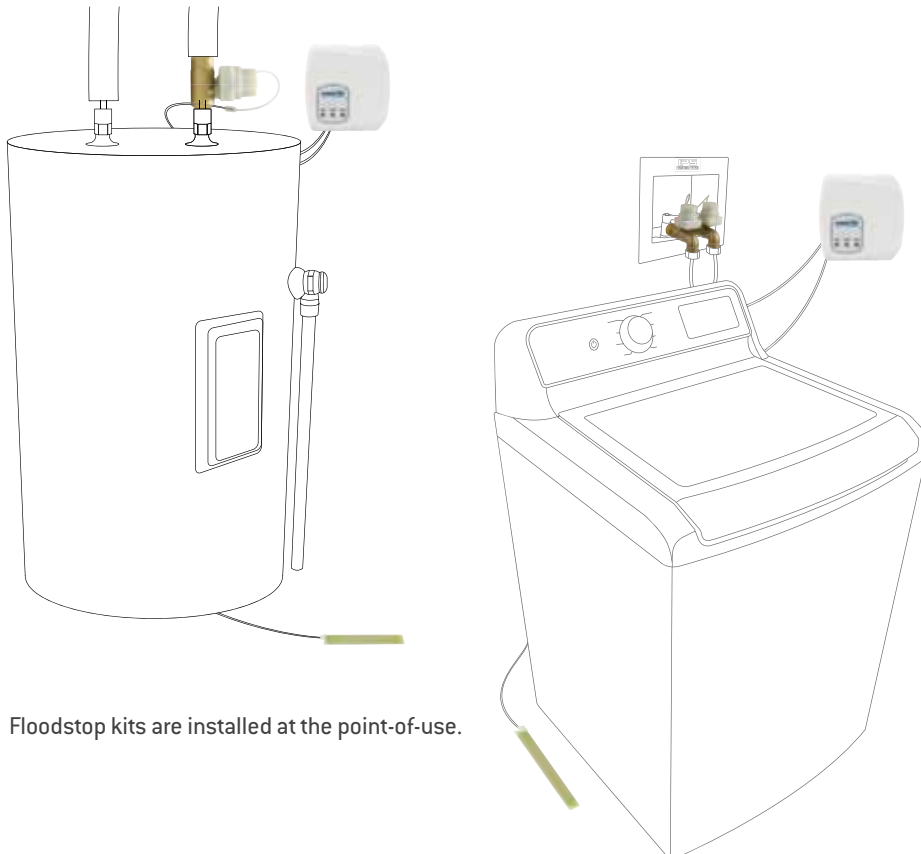
PRODUCT	MODEL	DESCRIPTION	KIT	MASTER
20000	FS12NPT	Water Heater Kit 1/2" NPT MIP x FIP	1	12
20006	FS12NPTD	Water Heater Kit 1/2" NPT, 2 Valves	1	12
20001	FS34NPT	Water Heater Kit 3/4" NPT MIP x FIP	1	12
20002	FS34C	Water Heater Kit 3/4" Compression	1	12
20007	FS34P	Water Heater Kit 3/4" Push-to-Connect	1	12
20003	FS1NPT	Water Heater Kit 1" NPT MIP x FIP	1	12
20004	FS125NPT	Water Heater Kit 1 1/4" NPT MIP x FIP	1	12
20005	FS150NPT	Water Heater Kit 1 1/2" NPT MIP x FIP	1	12

Washing Machine Kits

20010	FS34H90	Washing Machine Kit 3/4" 90 deg, Hot & Cold Valves	1	12
20011	FS34H	Washing Machine Kit 3/4" Straight, Hot & Cold Valves	1	12

Ice Maker, Dish Washer, Toilet, Sink Kits

20020	FS14C	Ice Maker Kit 1/4" Compression	1	12
20021	FS38C	Dishwasher/Toilet Kit 3/8" Compression	1	12
20022	FS38CD	Sink Kit 3/8" Compression, Hot & Cold Valves	1	12



Protect the entire home with



leak detection devices.



Accessories/Spare Parts

	PRODUCT	MODEL	DESCRIPTION	KIT	MASTER
	20070	FSACONT1	Controller-Single Valve Kit	1	1
	20071	FSACONT2	Controller-Two Valves Kit	1	1
	20072	FSAXS01	Water Sensor	1	1
	20077	FSASEXT10	10' Sensor Wire extension	1	1
	20078	FSASEXT22	22' Sensor Wire extension	1	1
	20079	FSASM01	Sensor Manifold	1	1
	20073	FAWA	9V AC Wall Adapter, White	1	1
	20091	FAWAE9	9' Wall Adapter Extension Wire	1	1
	20074	FSACEXT9	Extension Wire - Controller to Valve	1	1
	20075	FAWHS	Wiring Harness for Single Valve 84" to Sensor / 33" to Valve	1	1
	20076	FAWHD33	Wiring Harness for Dual Valve 84" to Sensor / 33" to Valve	1	1
	20095	FAWHD72	Wiring Harness for Dual Valve 84" to Sensor / 72" to Valve	1	1
	20092	FSASVHARNP25	Wiring Harness, Plenum Rated, Single Valve	1	1
	20093	FSAMOTOR5M	Motor 5 Stage Gearbox for 1" diameter & smaller kits	1	1
	20094	FSAMOTOR6M	Motor 6 Stage Gearbox for 1.25" dia & larger kits	1	1
	20052	FSWIFE	Wi-Fi Module	1	1



For more information about Floodstop, visit ipsplumbingproducts.com or contact your IPS sales representative.

